

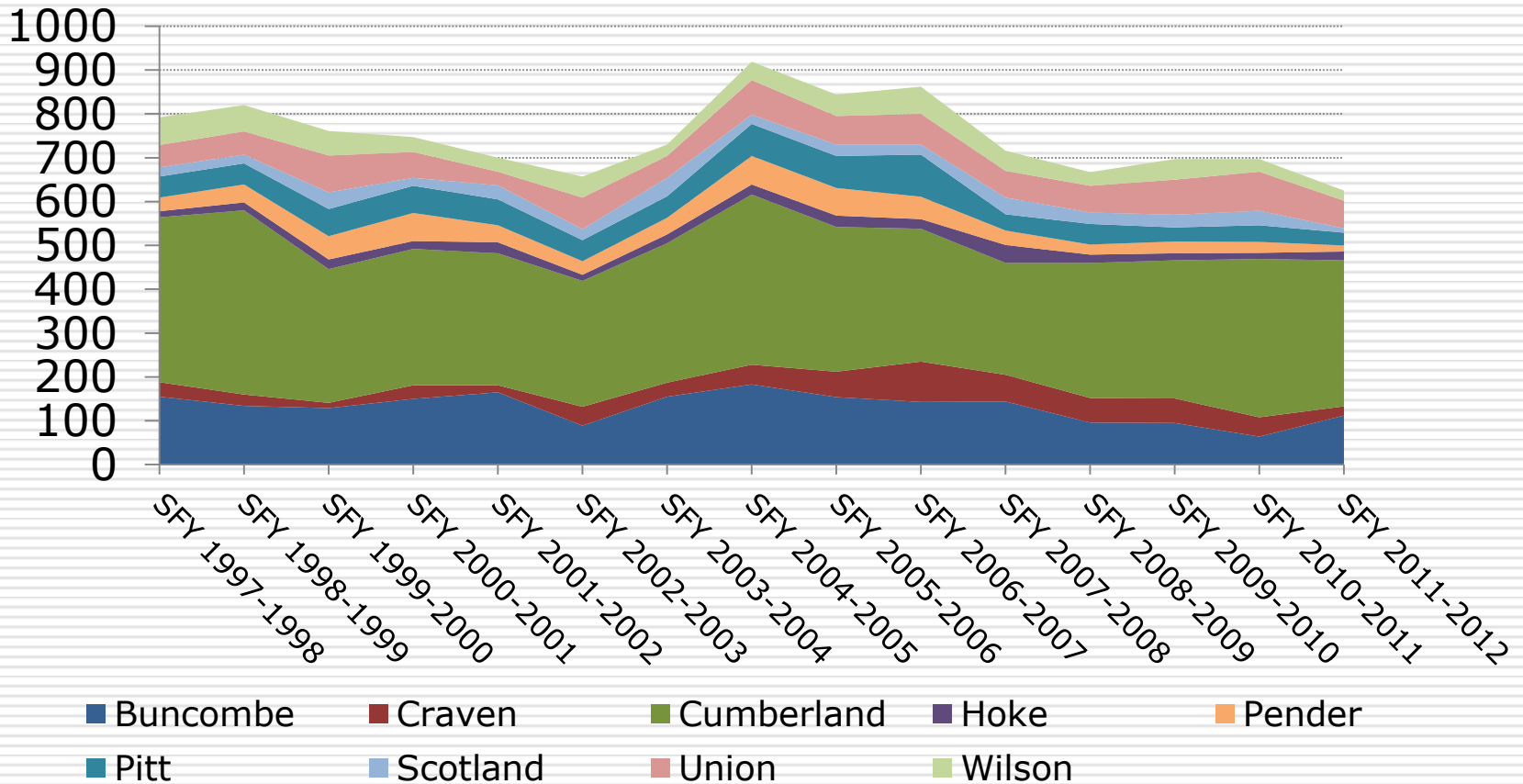
Observations on Foster Care in Project Broadcast Counties

by
D. F. Duncan
UNC-CH School of Social Work
September 19, 2012

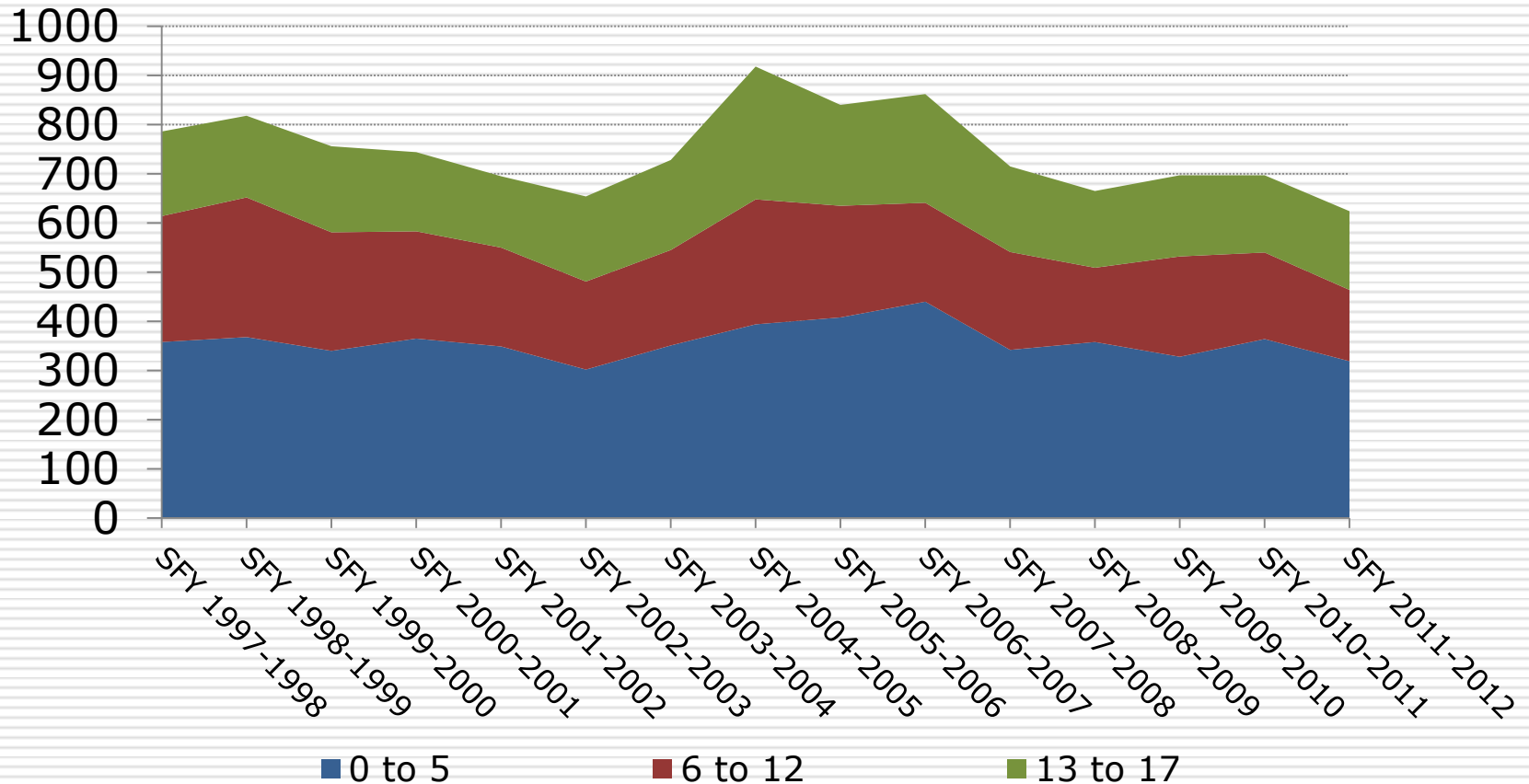
Who is Entering Care?



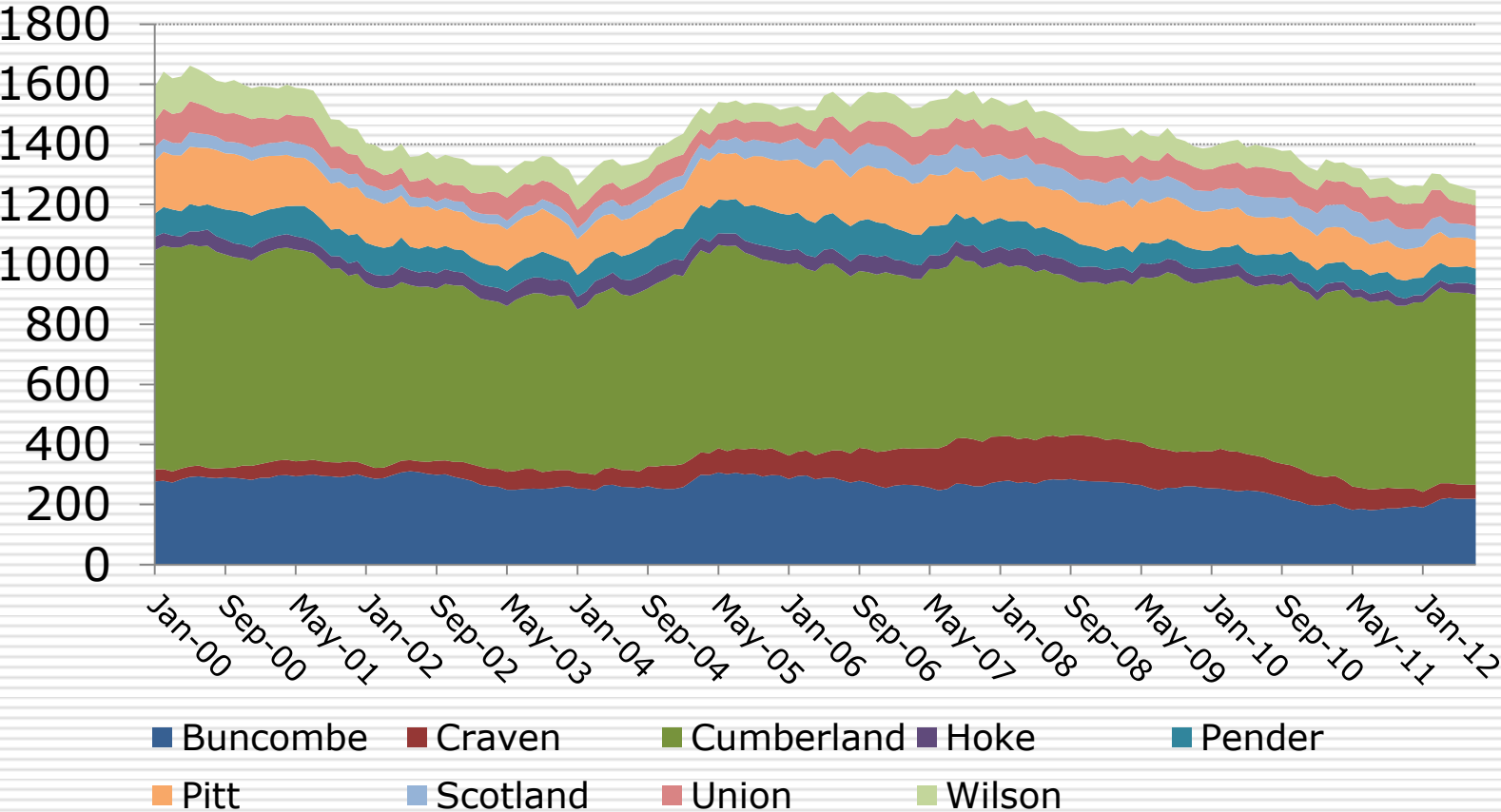
Initial Entries into Foster Care in Project Broadcast Counties



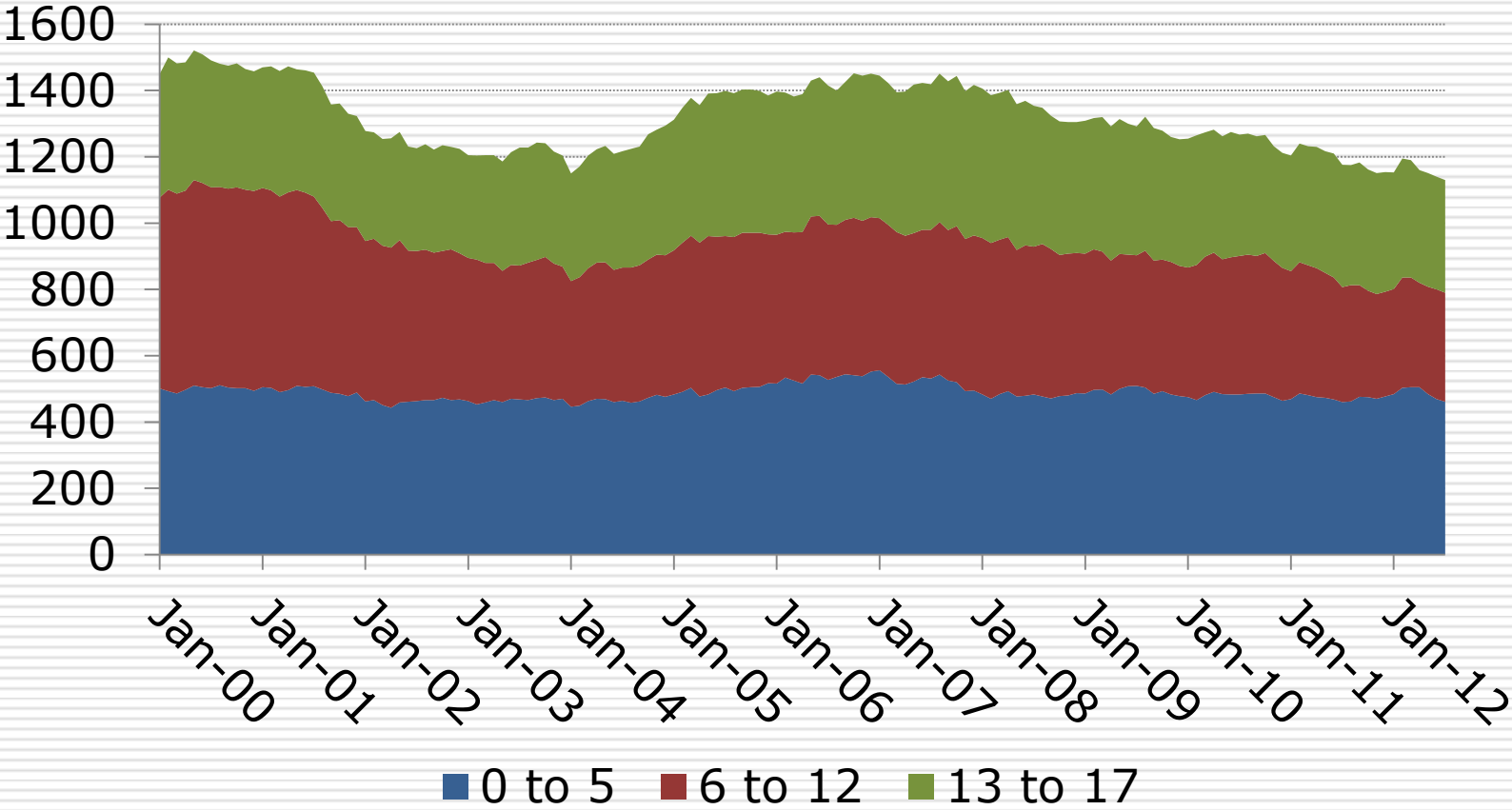
Initial Entries into Foster Care in Project Broadcast Counties By Age



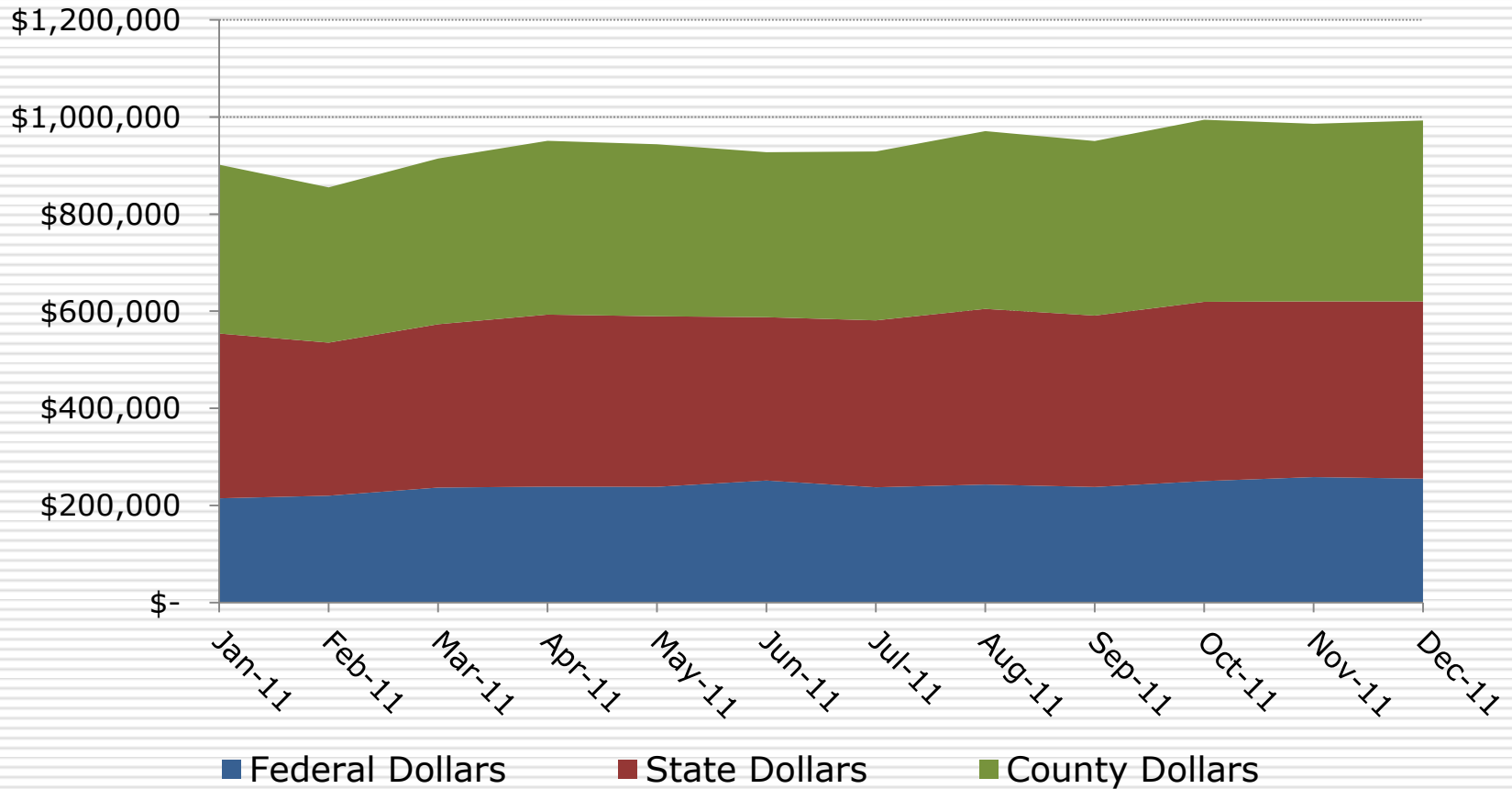
Number of Children in Foster Care in Project Broadcast Counties



Number of Children in Care in Project Broadcast Counties By Age



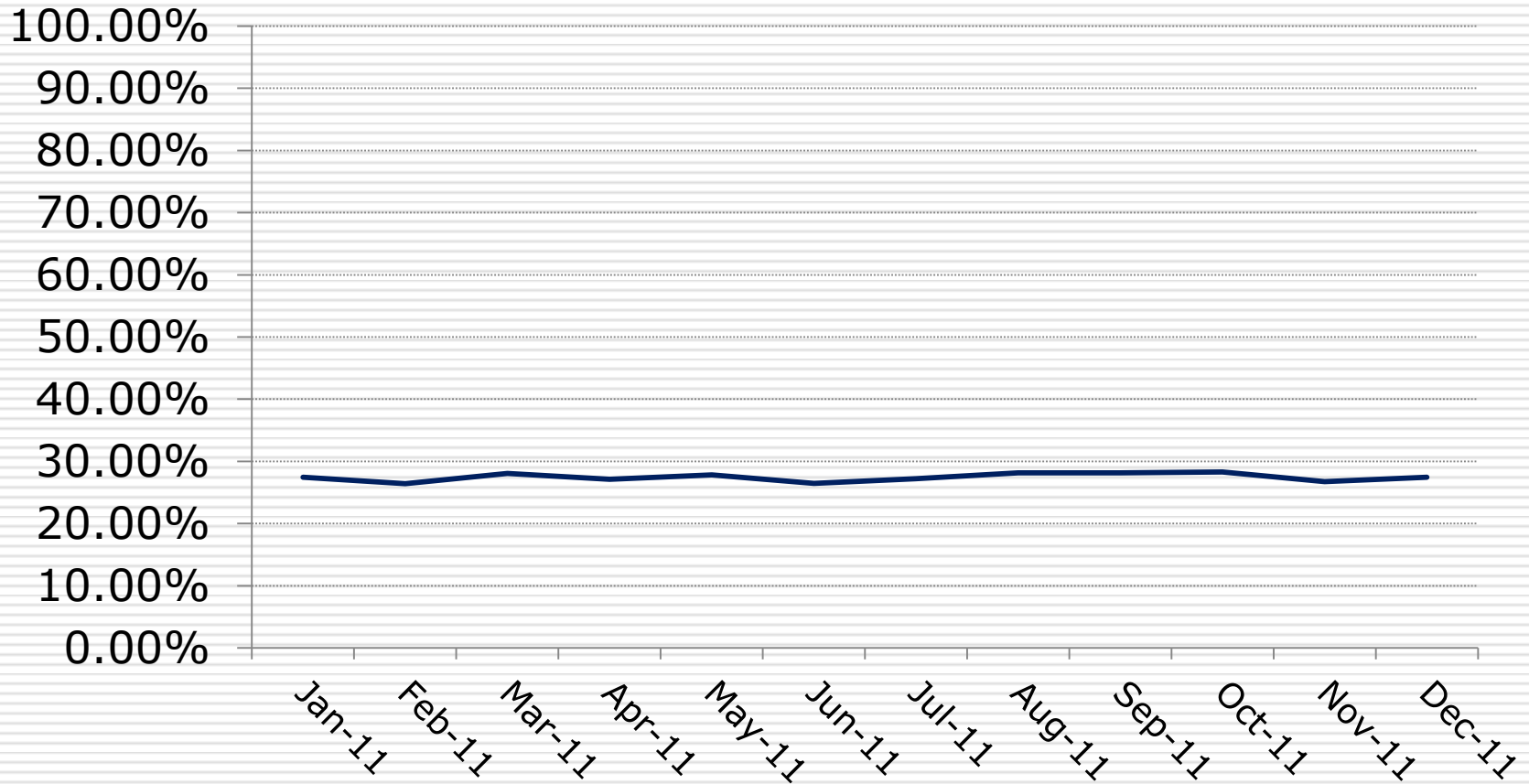
Amount Spent on Room and Board for Foster Children Each Month in Project Broadcast Counties



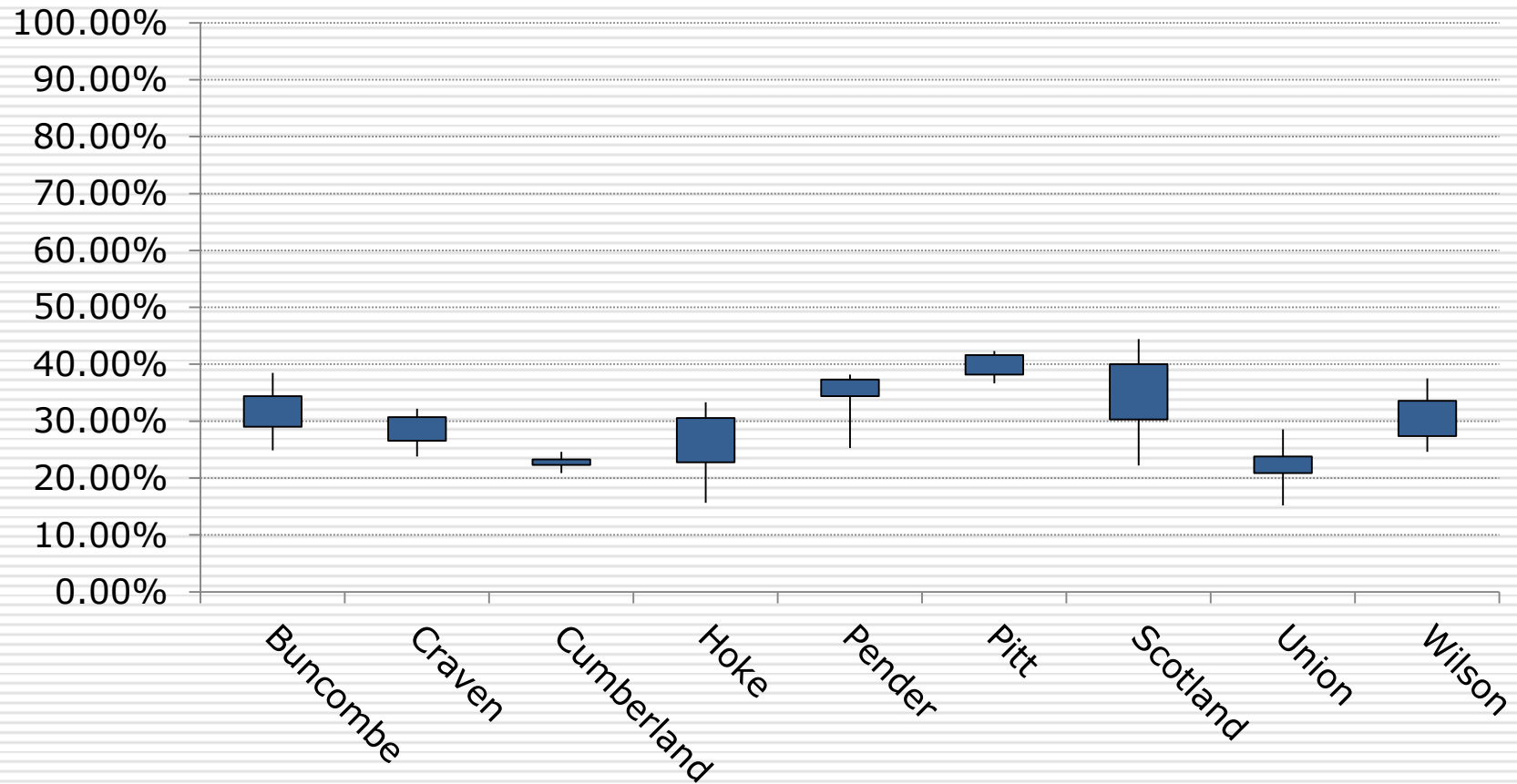
Psychotropic Drugs



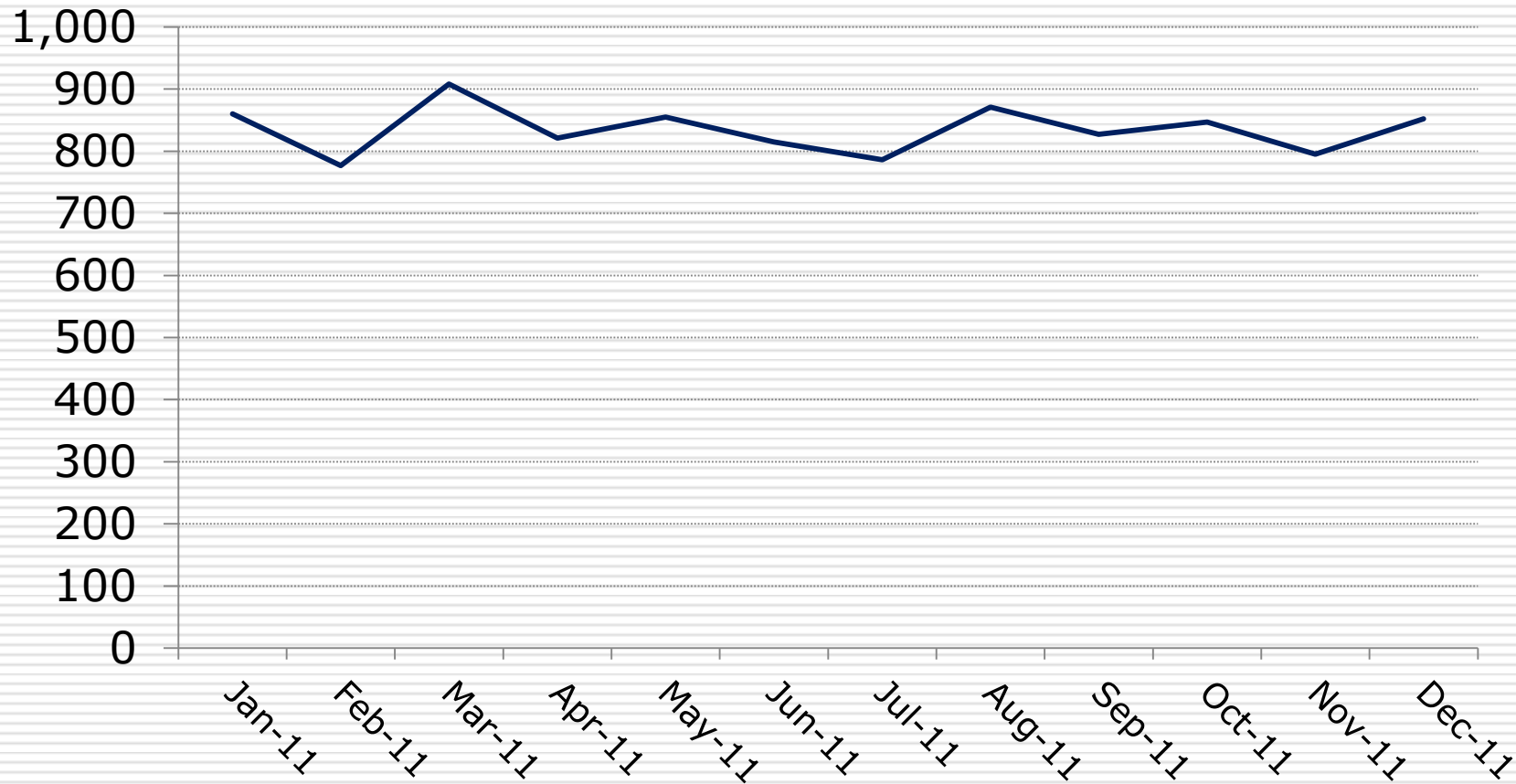
Percentage of Foster Children in Project Broadcast Counties with a Prescription for Psychotropic Drugs Each Month in 2011



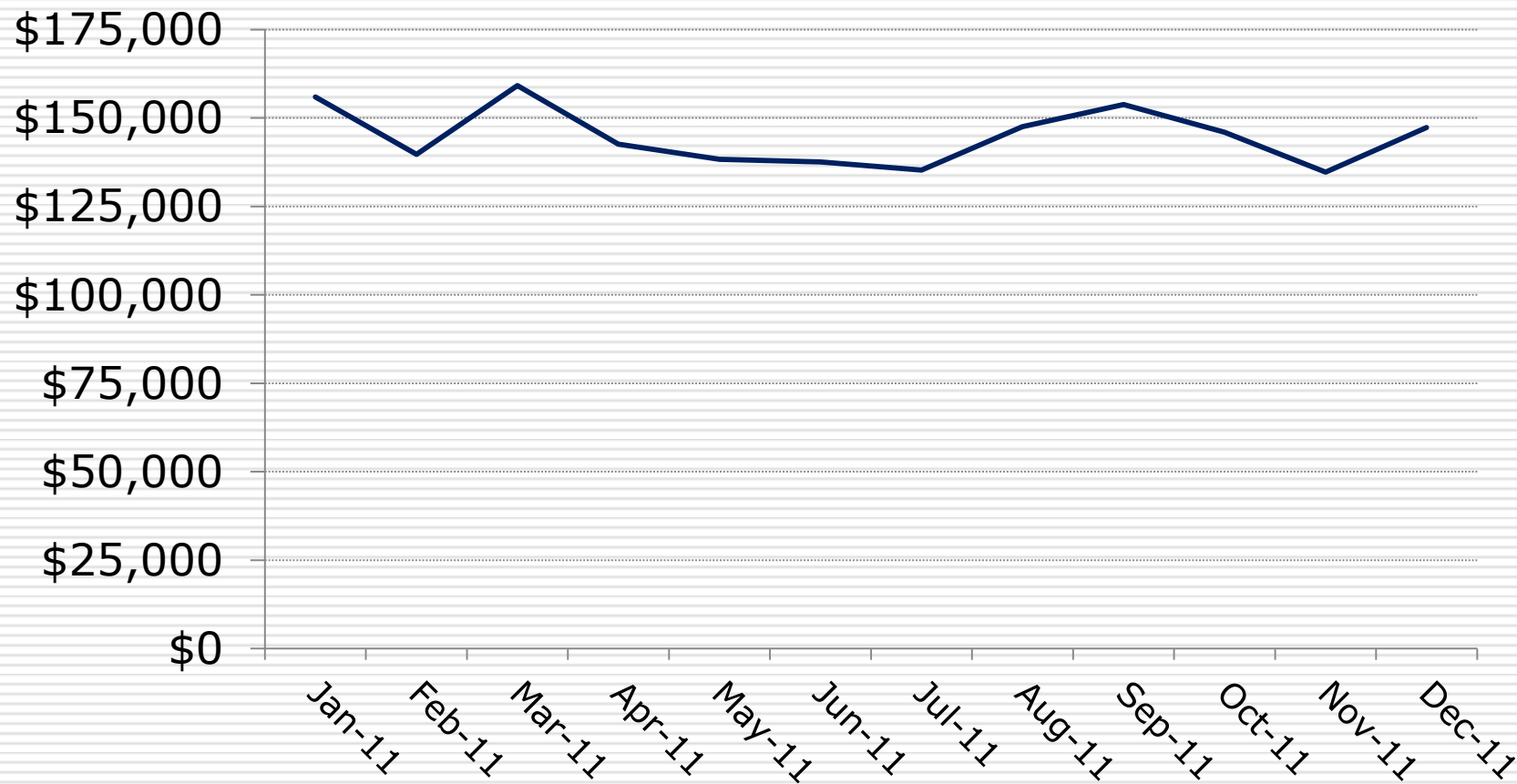
Range of the Percentage of Foster Children in Project Broadcast Counties with a Prescription for Psychotropic Drugs Each Month By County



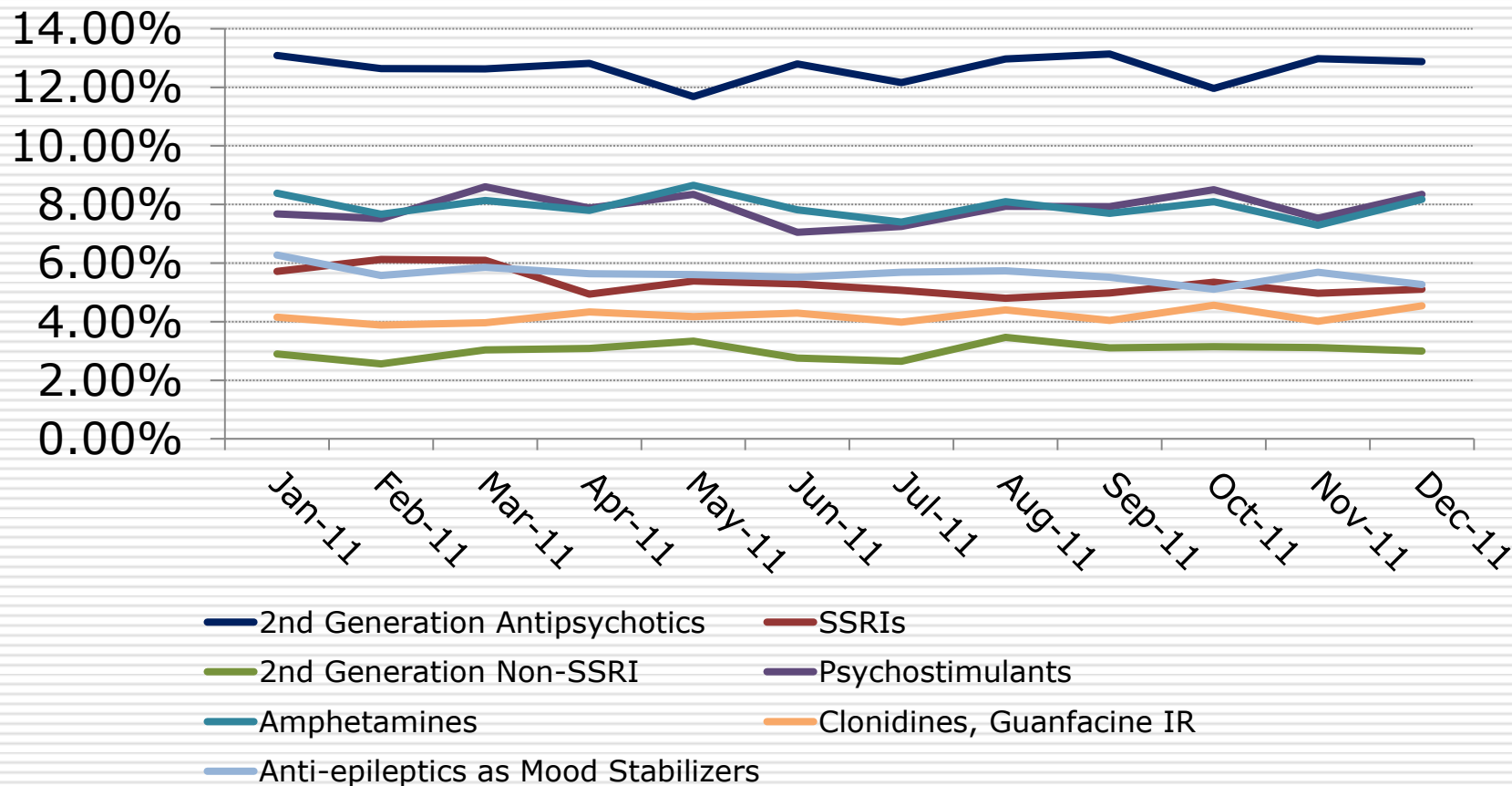
Number of Prescriptions for Psychotropic Drugs for Foster Children in Project Broadcast Counties Each Month



Amount Spent on Prescriptions for Psychotropic Drugs for Foster Children in Project Broadcast Counties Each Month



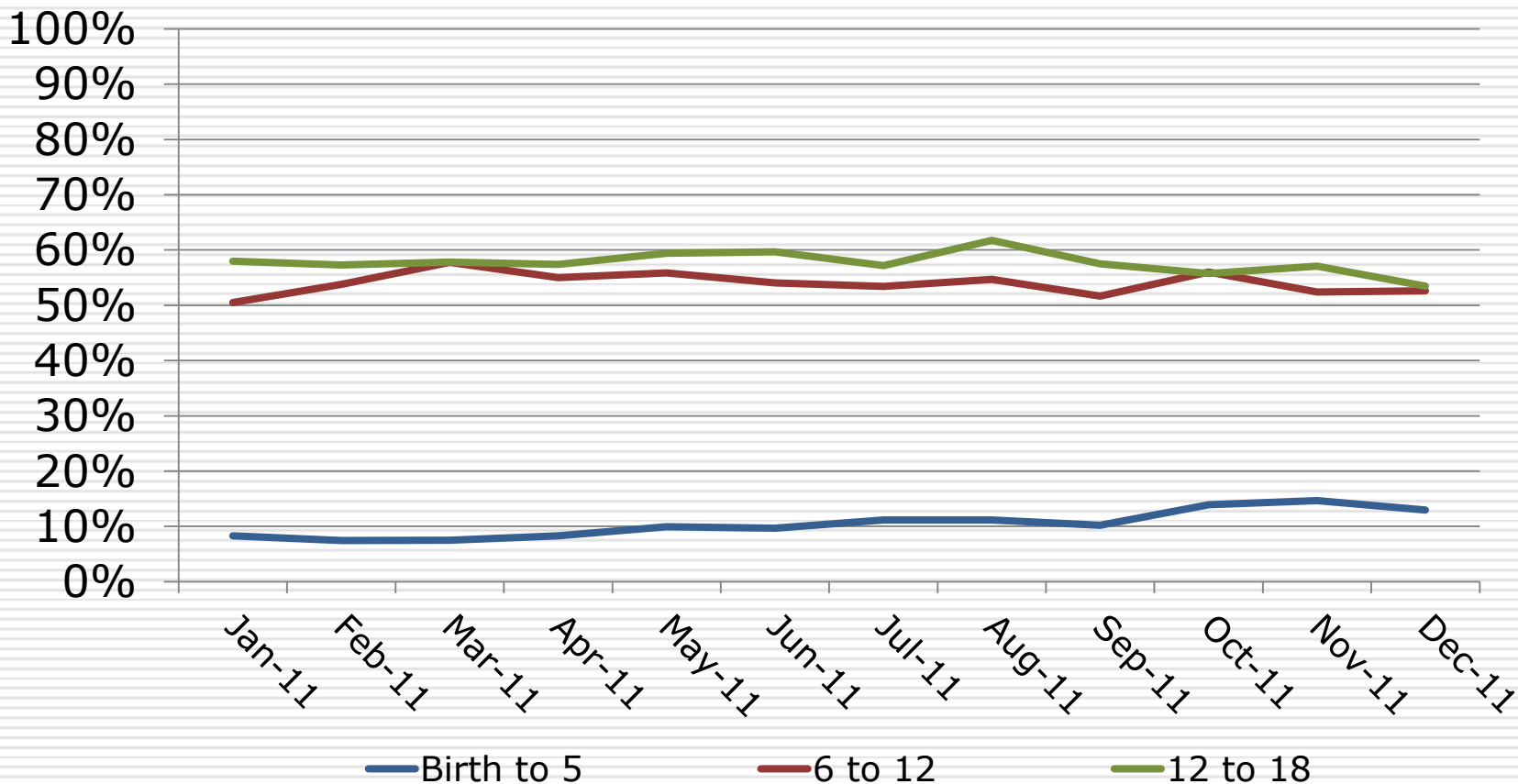
Percentage of Foster Children in Project Broadcast Counties with a Prescription for Psychotropic Medications By Type



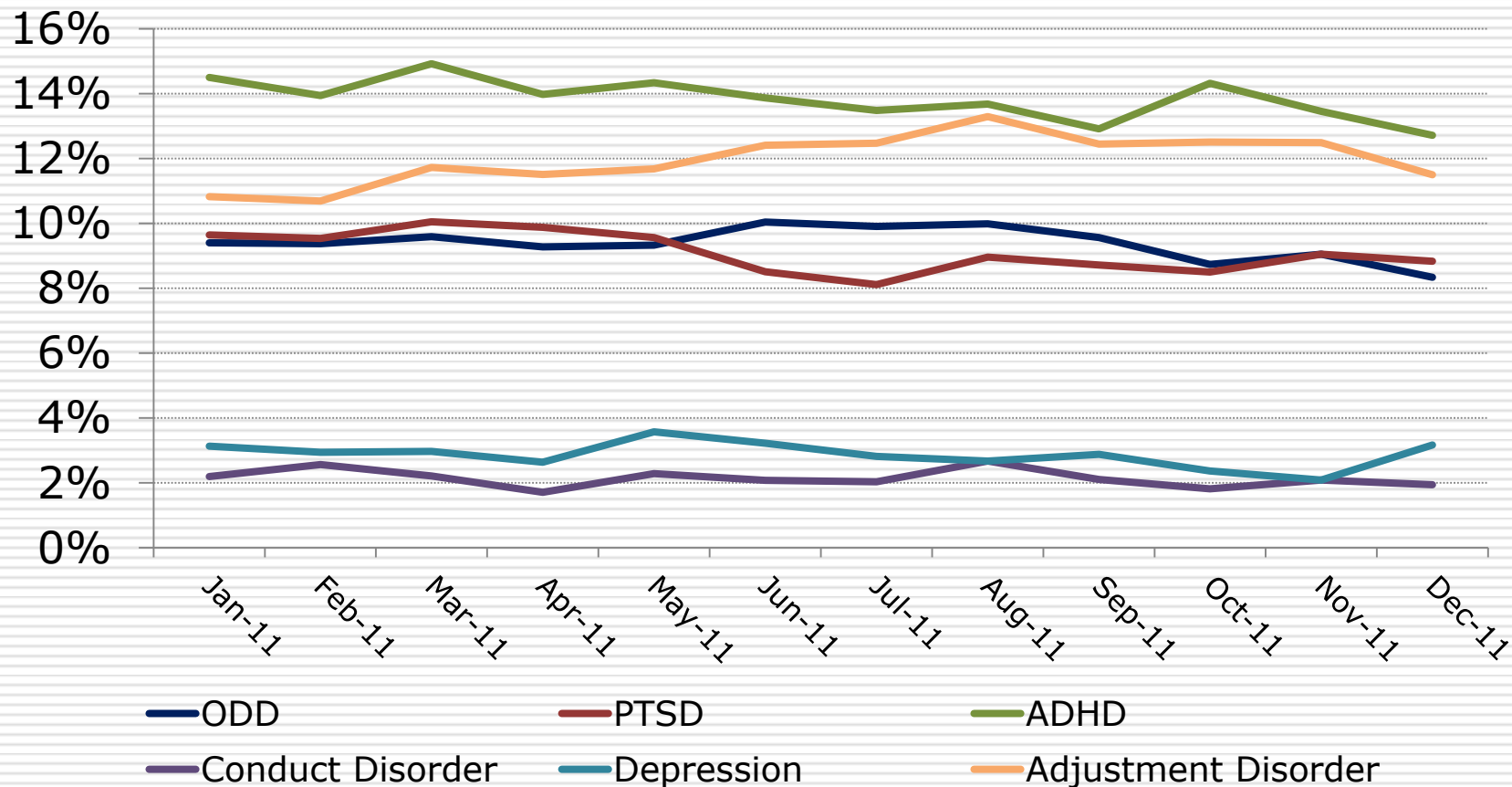
Behavioral Health



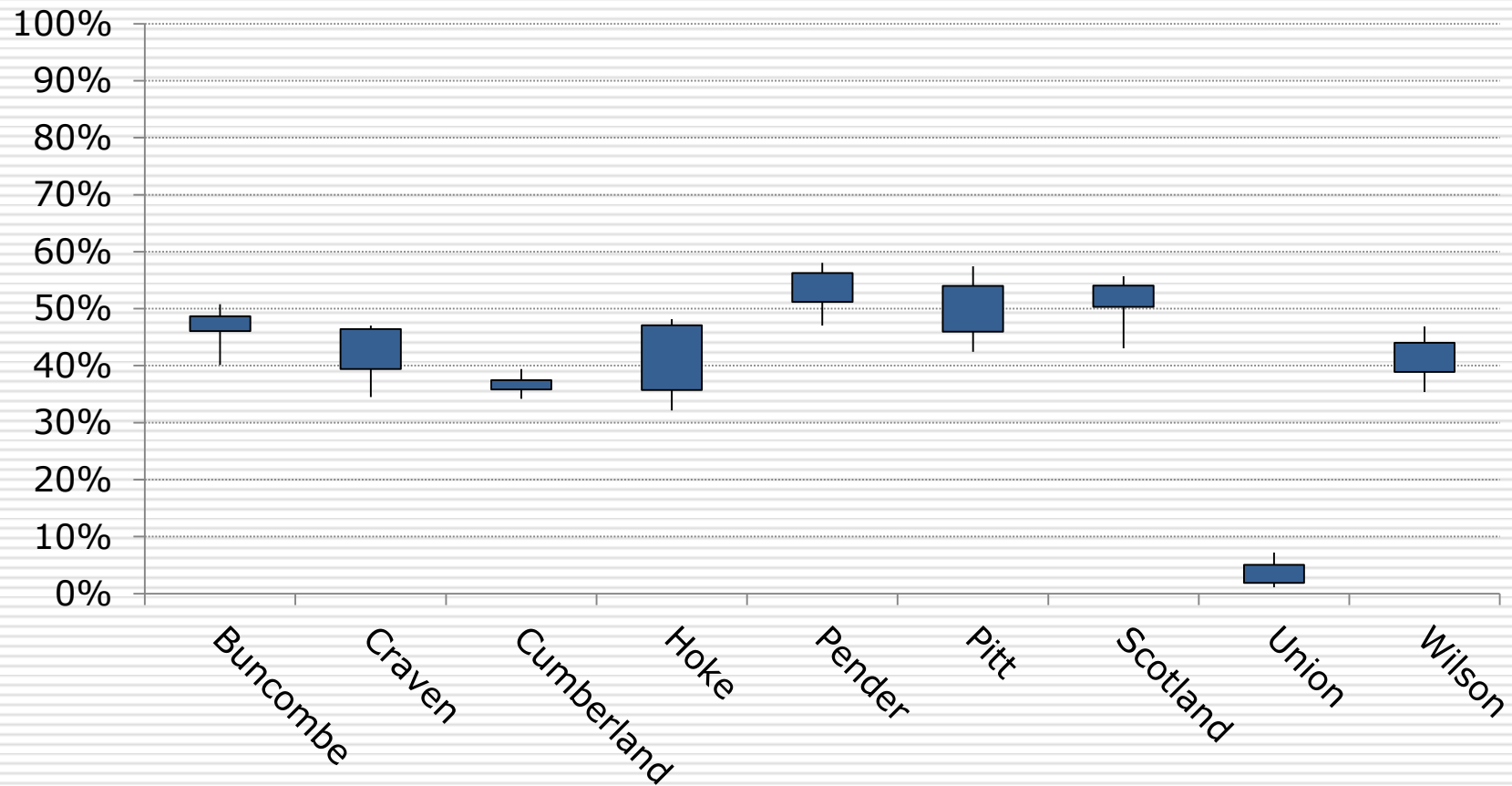
Percentage of Foster Children in Project Broadcast Counties with a Behavioral Health Diagnosis By Age



Percentage of Foster Children in Project Broadcast Counties with a Behavioral Health Diagnosis By Diagnosis



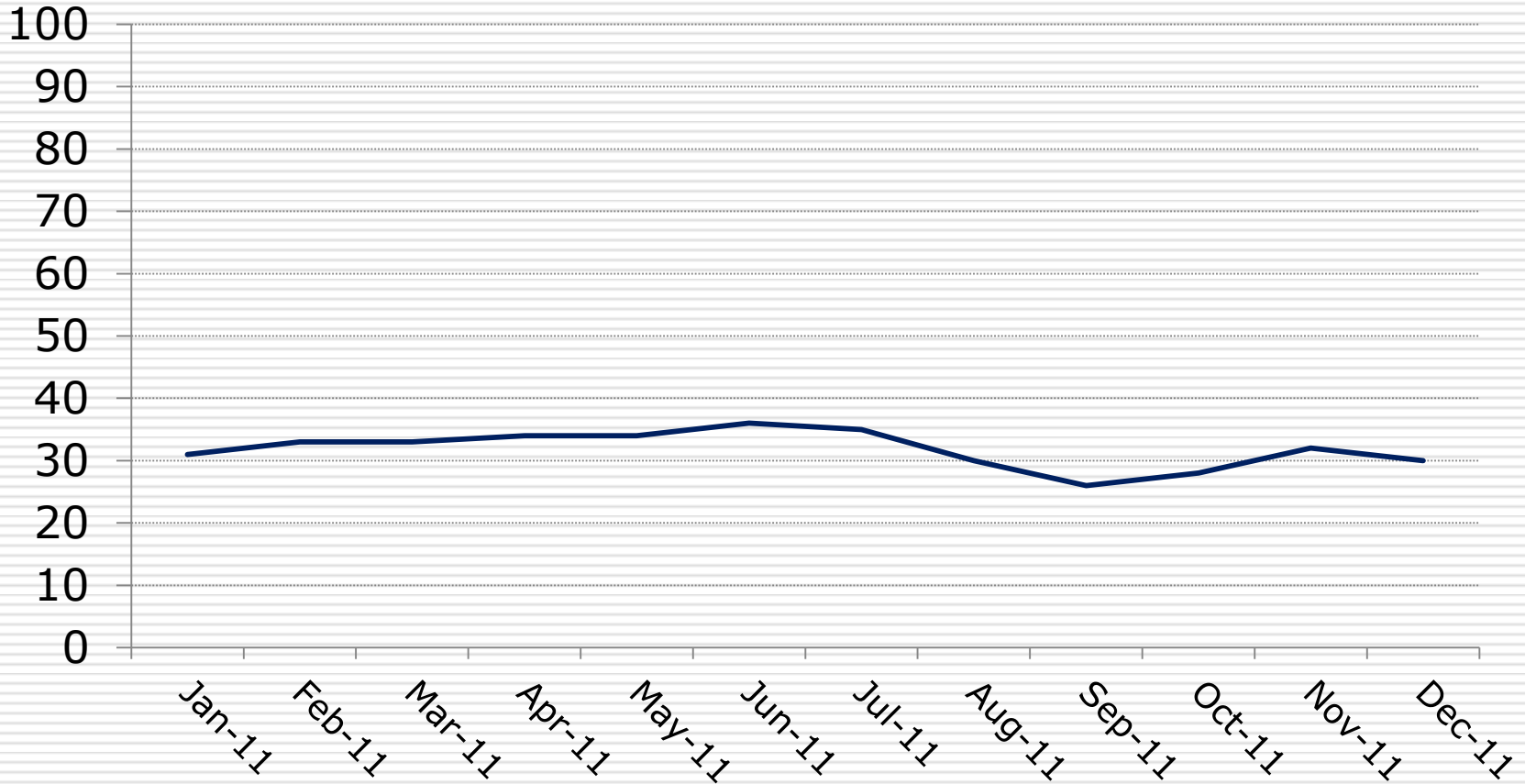
Range of the Percentage of Foster Children in Project Broadcast Counties with a Behavioral Health Diagnosis by County



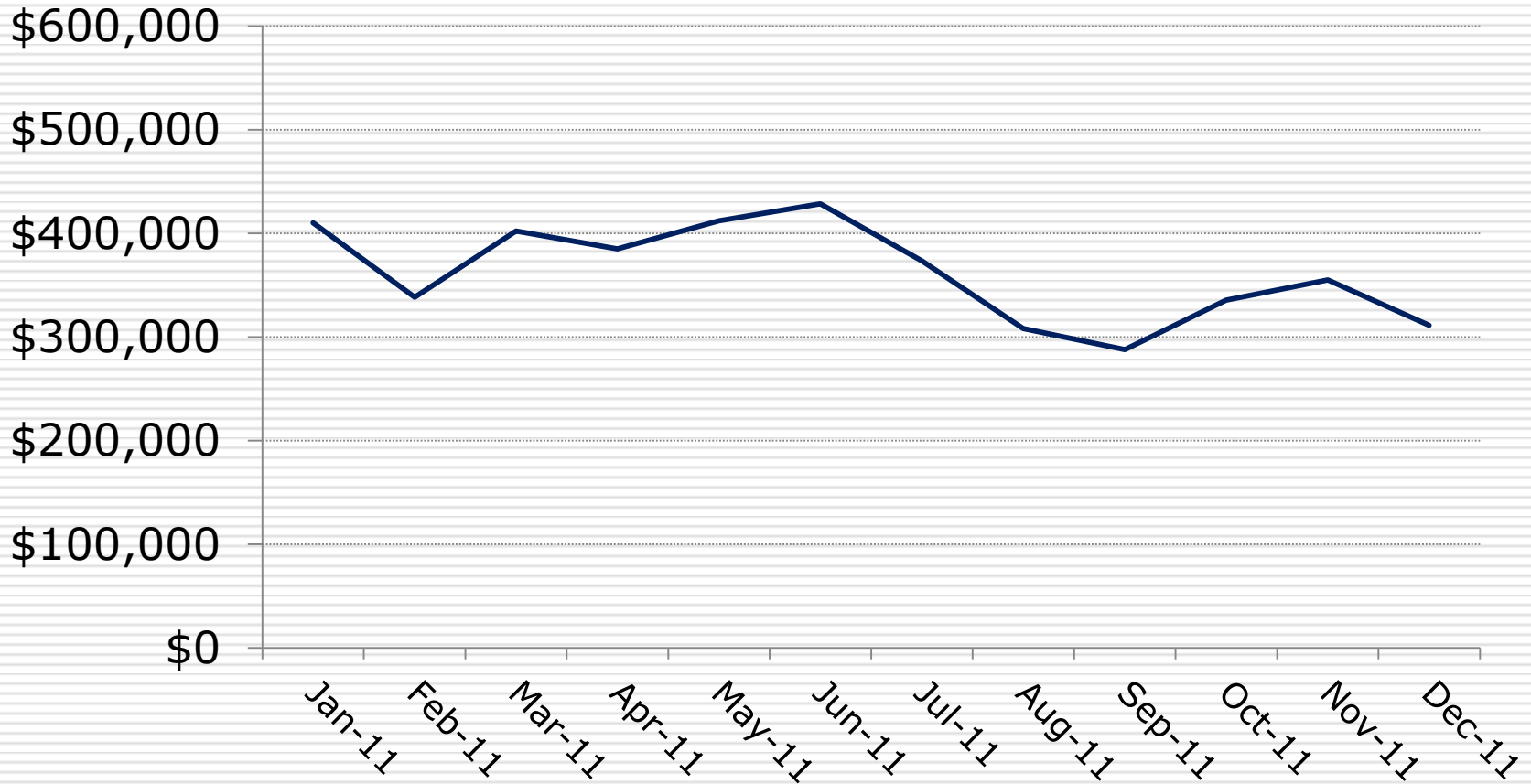
Psychiatric Residential Treatment Facilities



Number of Foster Children in Project Broadcast Counties in Psychiatric Residential Treatment Facilities Each Month



Amount Spent on Children in High Risk Intervention Therapeutic Foster Care in Project Broadcast Counties Each Month



Summary

- ❑ The number of children from Project Broadcast counties entering foster care is declining
- ❑ There are about 1,250 children in foster care in these counties at present
- ❑ It costs about \$1,000,000 per month for room and board for these children who are in licensed care



Summary

- ❑ Just under 30% of foster children in Project Broadcast counties have a prescription for psychotropic medications
- ❑ The most common is a second generation antipsychotic
- ❑ Psychotropic drug costs for these children average around \$150,000 per month



Summary

- About 40% of foster children from Project Broadcast counties have a behavioral health diagnosis
- The most common is ADHD
- About 30 children in foster care from these counties are housed in a Psychiatric Residential Treatment Facility (PRTF) each month



Summary

- ❑ The costs for those foster children in PRTFs run between \$300,000 and \$400,000 per month
- ❑ This is in addition to the \$1,000,000 per month spent for room and board for children in foster care who are not in PRTFs



Summary

□ Questions?

□ Contact:

D. F. Duncan

dfduncan@email.unc.edu

Copies of the presentation will be at:

<http://ssw.unc.edu/ma/>

