

NC Waiver Demonstration: The Final Chapter

Judith Wildfire
Dean Duncan

June 16, 2008

Washington, DC

Background on NC Demonstration

- ❑ Waiver demonstration period 1: July 1997 – June 2002 (19 Waiver counties)
 - ❑ Waiver demonstration period 2 began July 2004 (38 Waiver counties)
 - ❑ NC remained cost neutral until end of 2007
 - ❑ In May 2007 NC and the Children's Bureau agreed to terminate the Waiver retroactive to December 2006
-

Characteristics of NC Waiver

- Use IV-E resources to develop services and practices that targeted any of the outcomes including reduce probability of placement
 - Use IV-E resources to address needs of families and children who could not otherwise be served with these resources
 - Assisted Guardianship
-

Characteristics of NC Waiver

- ❑ Approach adopted varied county to county
 - ❑ Usually an agency-wide commitment to system reform
-

Dimensions of Waiver Process Measurement in NC

Population focus

- Was demonstration system reform effort or was it targeted to individual children and families

Service focus

- Types of new or enhanced services made possible by demonstration

Level of service

- Coverage level of new or enhanced services
-

Dimensions of Waiver Implementation in NC

- Population focus: child-specific versus county-wide focus for new and enhanced services
 - 22 counties primarily county-wide
 - 2 counties implemented only targeted child-specific spending
 - 11 counties implemented mix of county-wide and targeted child-specific spending
-

Dimensions of Waiver Implementation in NC

Service focus

- What types of services or practice changes did counties implement using IV-E resources?
 - Basic needs
 - Child welfare services
 - Treatment services
-

Dimensions of Waiver Implementation in NC

□ Service focus

- 5 counties focused on basic needs services (e.g. housing, day care, transportation, utility payments)
 - 15 counties focused on child welfare services (e.g. respite, legal services, resource family support)
 - 6 counties focused on treatment services (e.g. counseling, substance abuse treatment)
 - 9 counties provided a combination of 2 areas of services
 - 3 counties provided no services as a result of the Waiver
-

Dimensions of the Waiver Implementation in NC

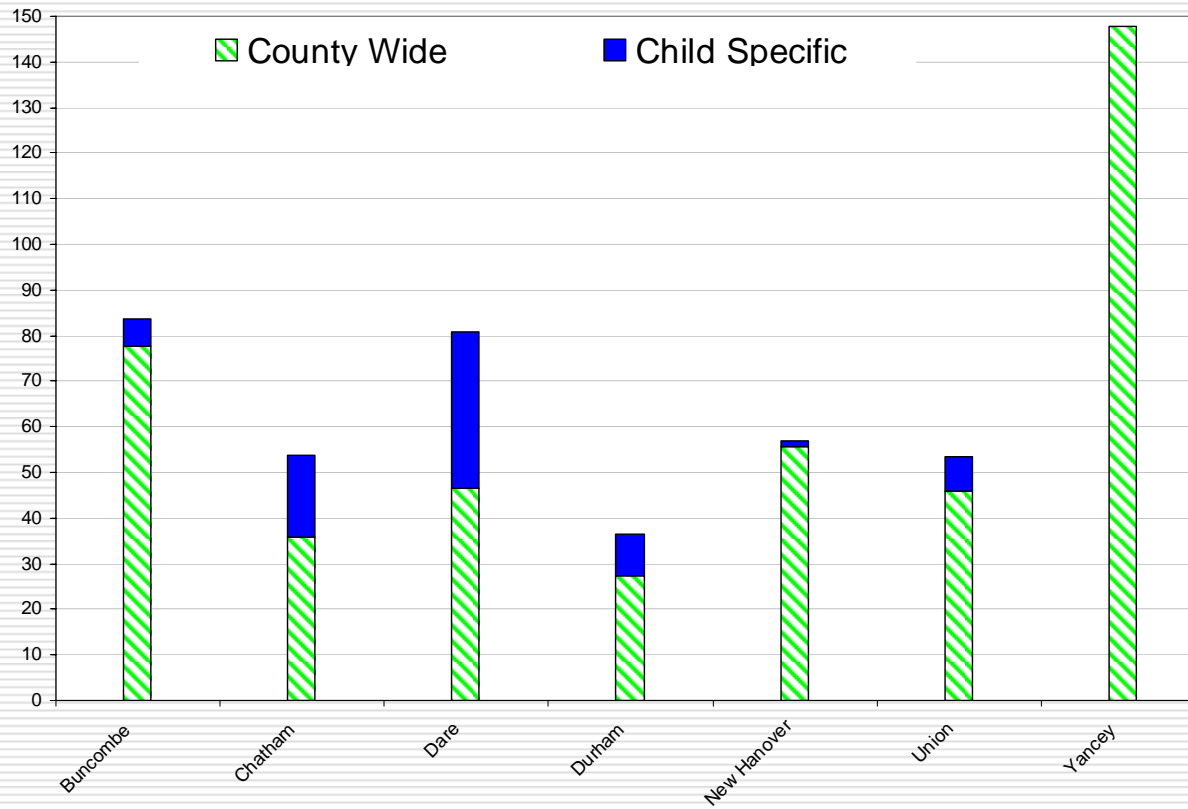
- Level of service is defined as ratio of service episodes reported to the total number of children served
 - High service group: 7 counties – 37 to 148 service episodes per 100 children
 - Mid-level service group: 24 counties – 3 to 25 service episodes per 100 children
 - Lowest level service group: 7 counties – no services (4) or minimal number (3)
-

Table 2.1. Level of Service Ratio (# Service Episodes per 100 Children) by Population and Service Focus

Waiver Counties	County Wide Services			Child Specific Services		
	Basic Needs	Treatment	Child Welfare	Basic Needs	Treatment	Child Welfare
High level service (n=7)						
Range	0 - 36	0 - 76	15 - 66	0 - 9	0 - 7	0 - 18
Mean	11.4	15.9	35.3	5.0	1.9	4.0
Mid level service (n=24)						
Range	0 - 7	0 - 13	0 - 23	0 - 8	0 - 4	0 - 4
Mean	1.3	2.3	5.0	1.7	0.5	0.5

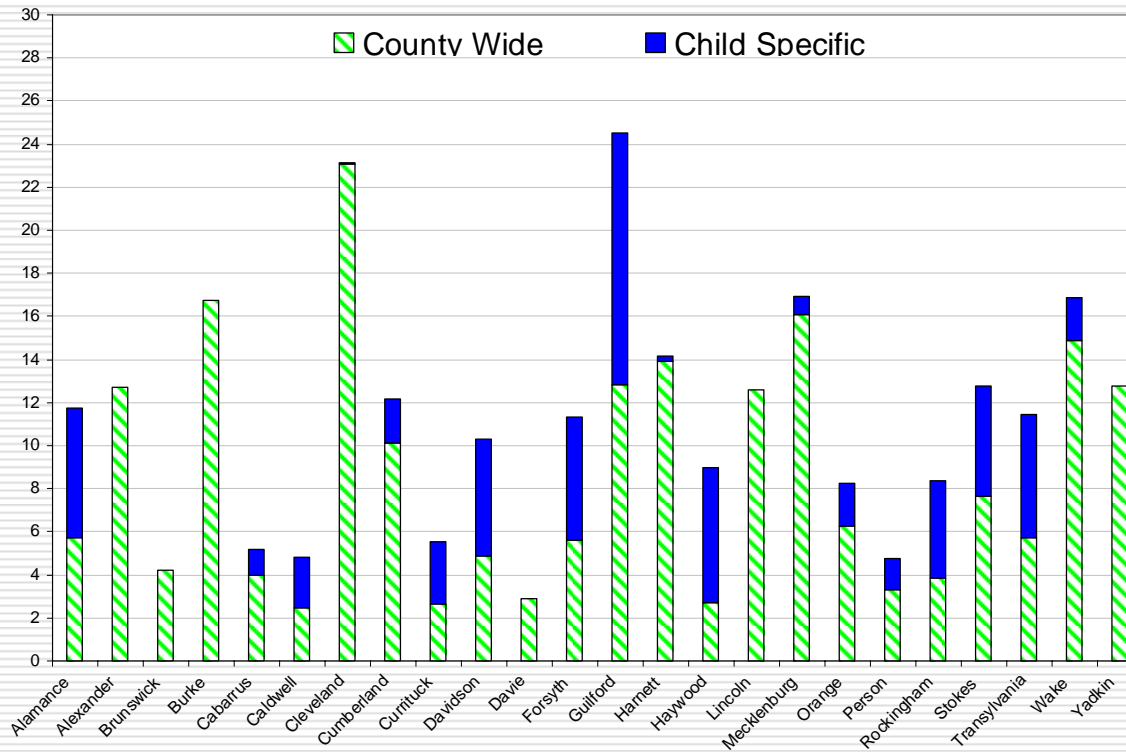
Did Counties Implement County-wide or Child-Specific Services?

High Service Level Counties

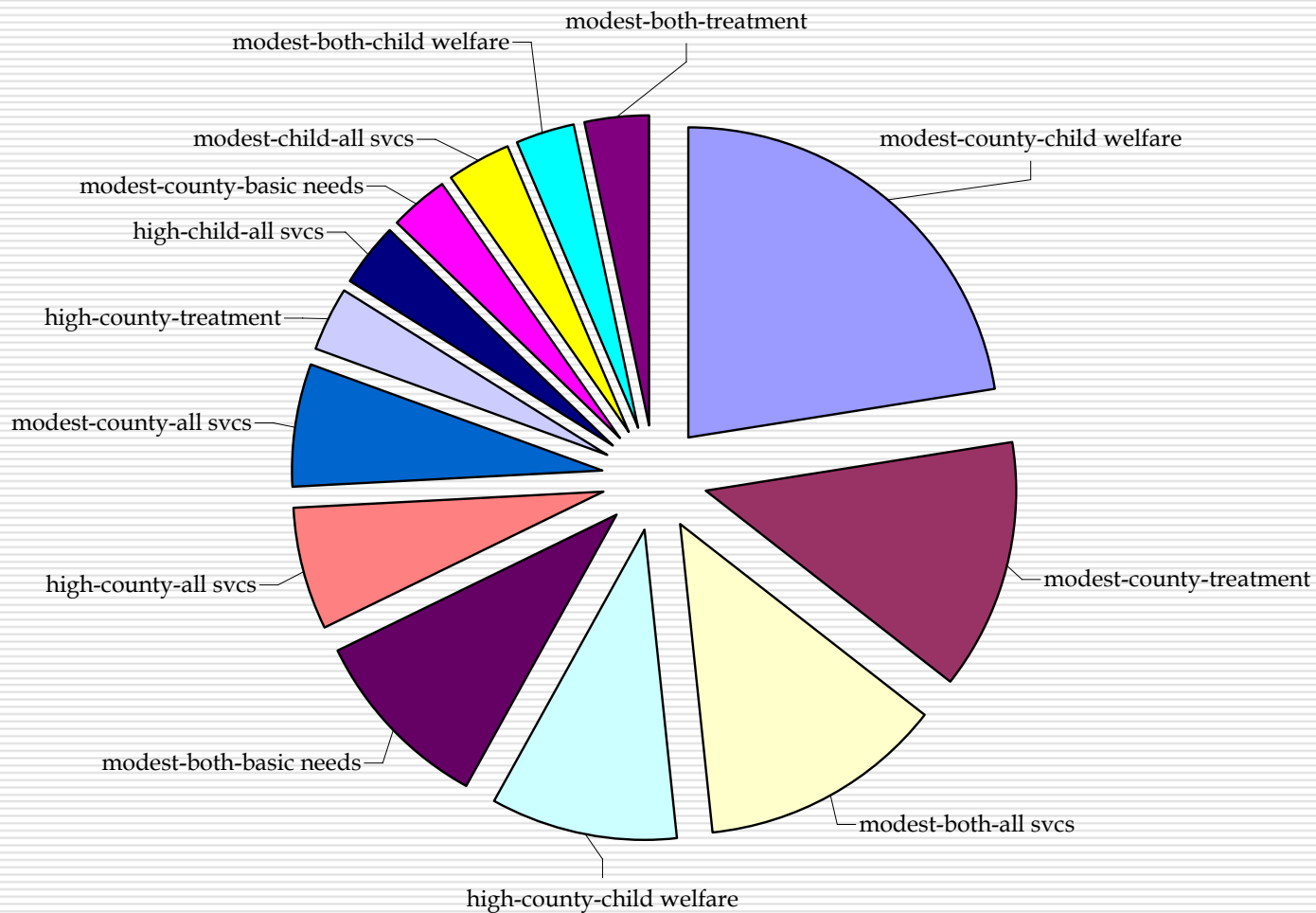


Did Counties Implement County-wide or Child-Specific Services?

Mid-level Service Counties



Models of Waiver Implementation Across Dimensions



Child-Specific Targeted Funding

- 2,587 children in 28 counties received services that were targeted specifically to their own needs
 - Top 6 expenditures categories
 - Housing (622 children)
 - Household utilities (461 children)
 - Child care (248 children)
 - Furniture (197 children)
 - Legal expenses (169 children)
 - Transportation (165 children)
-

Child-Specific Targeted Funding

- Child-specific funding was targeted to multiple outcomes
 - Most frequently used to avoid out-of-home placement
 - Also used to shorten length of stay for children in care
-

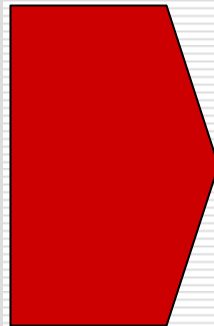
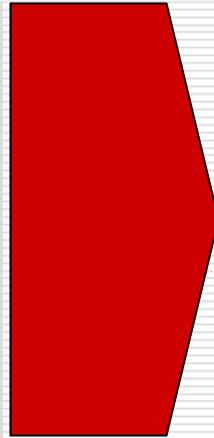
Summary: Implementation Status

- ❑ Majority of demonstration counties focused on child welfare services provided for county-wide population
 - ❑ When counties provided specific targeted services to children, these services tended towards meeting basic needs
-

Cost Neutrality

Outcomes & Samples

- Reduce reliance on out-of-home care while keeping children safe
- Reduce rate of repeat maltreatment
- Increase stability of placement experience
- Reduce length of stay
- Reduce reentry rate



- Cohorts of children with an initial report of maltreatment
 - Cohorts of children entering placement for first time
-

Outcomes

- Reduce reliance on out-of-home care while keeping children safe
 - Reduce rate of repeat maltreatment
 - Increase stability of placement experience
 - Reduce length of stay
 - Reduce reentry rate
-

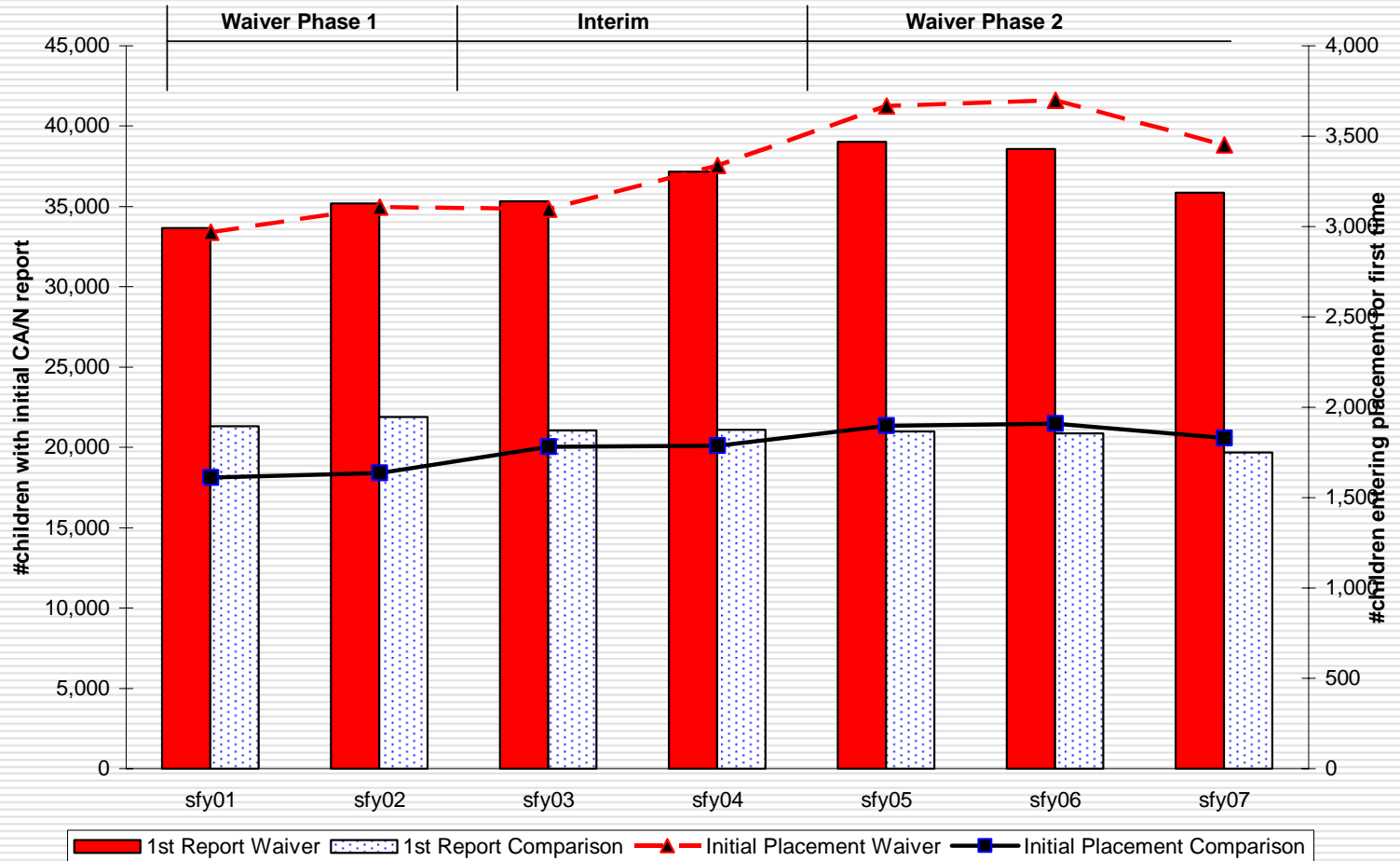
County-Level Analyses: Percentage of Waiver Counties that Had an Overall Positive Change in Outcomes

	Increase likelihood of exit within 1 year	Increase likelihood of exit after 2 years for children still in placement at 2 year mark	Reduce Reentry within 1 year	Reduce probability of placement	Reduce repeat maltreatment
High –level counties (n=7)	57%	57%	43%	29%	71%
Mid-level counties (n=24)	42%	33%	42%	46%	50%
Lower –level counties (n=7)	29%	29%	0%	0%	86%
Total (n=38)	42%	37%	34%	34%	61%

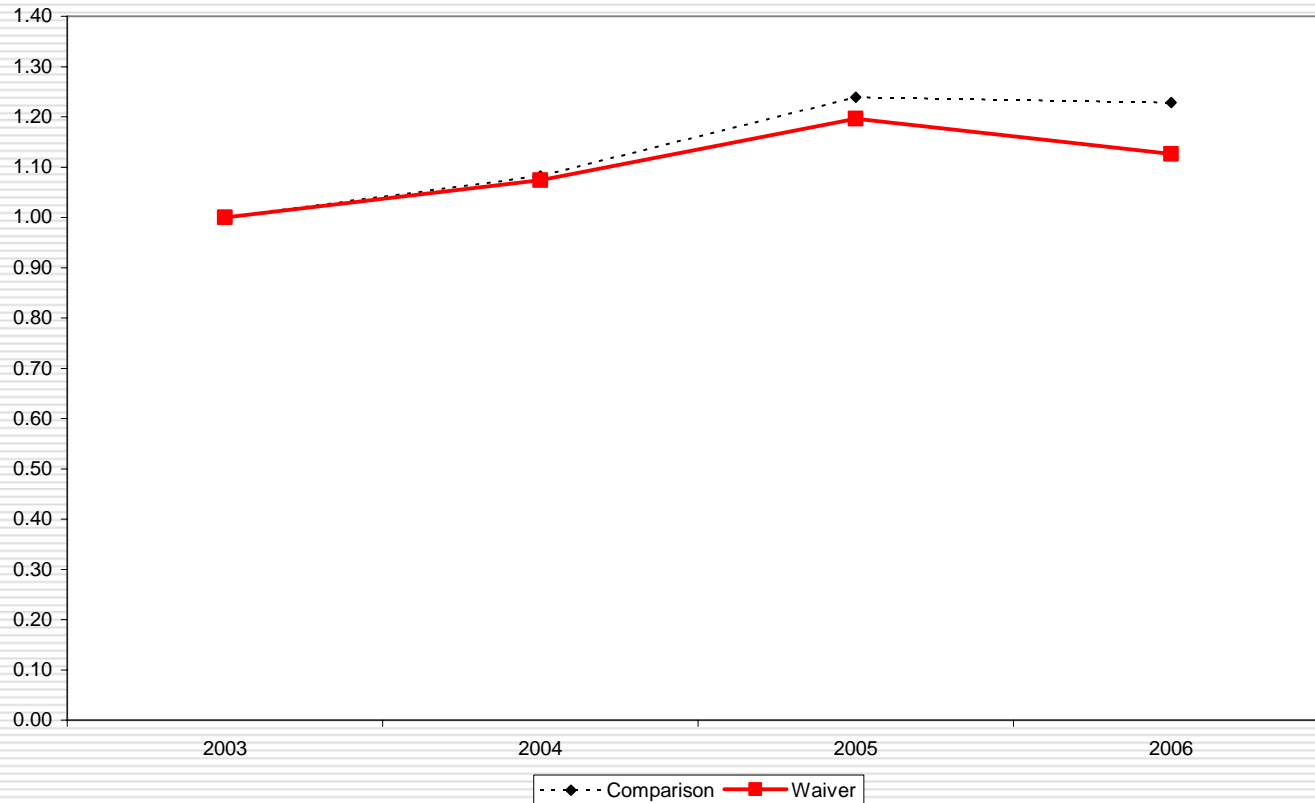
County-level Analyses: Time Series

- Multivariate growth curve models to examine rate of change in entries for Waiver counties versus comparison counties
 - Variables included in the models: MRS variable, unemployment rate, % minority population, region of state, size of county
 - Results:
 - No significant difference between low-level counties and comparison counties
 - High-level and mid-level counties decreased the number of entries by a significant number when compared to comparison counties
-

Number of Children with a First Report and Who Enter Placement for First Time by Year in Waiver and Comparison Counties

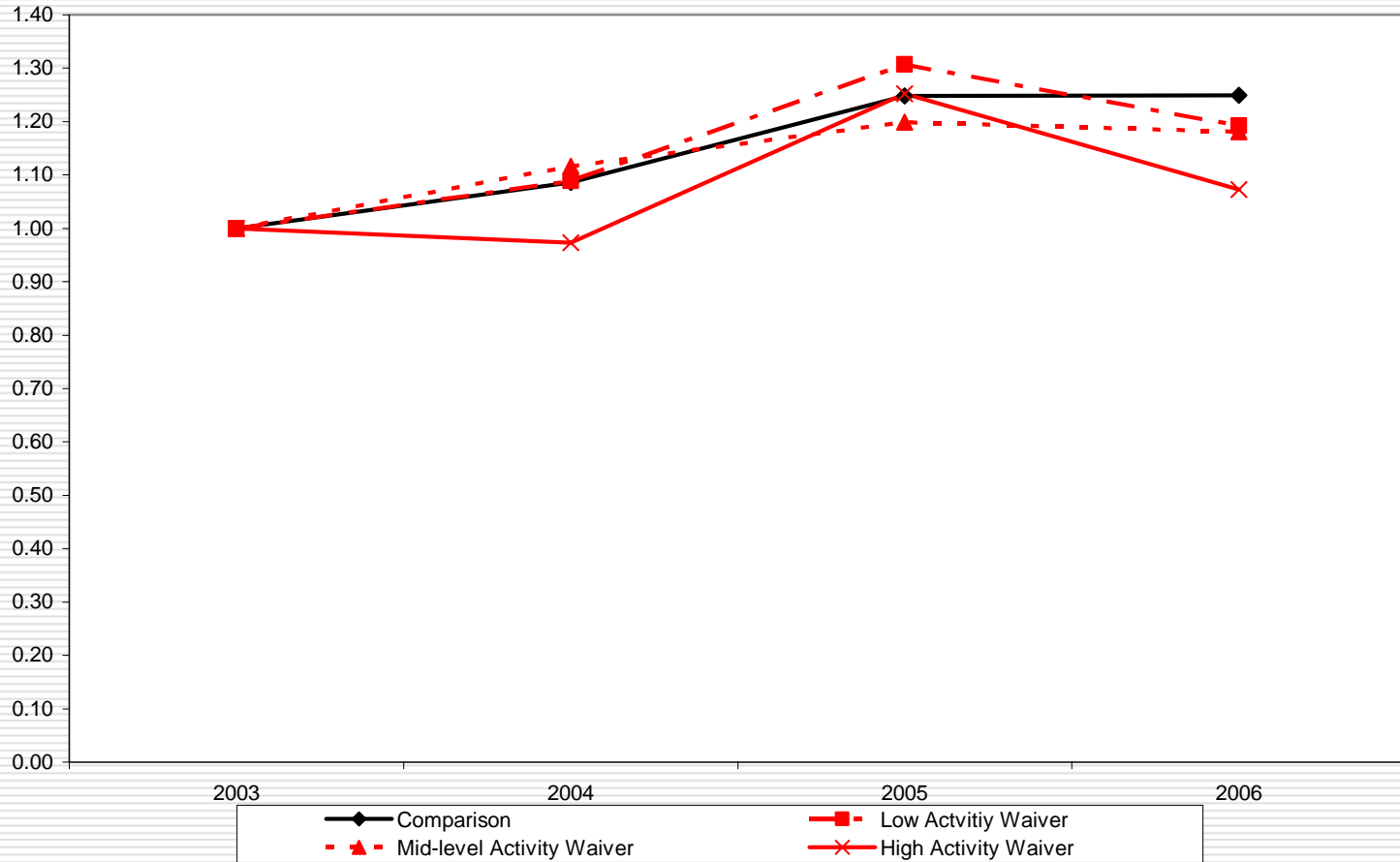


Probability of Placement: Rate of Change in Waiver and Comparison Counties
Compared to Baseline Year, 2003



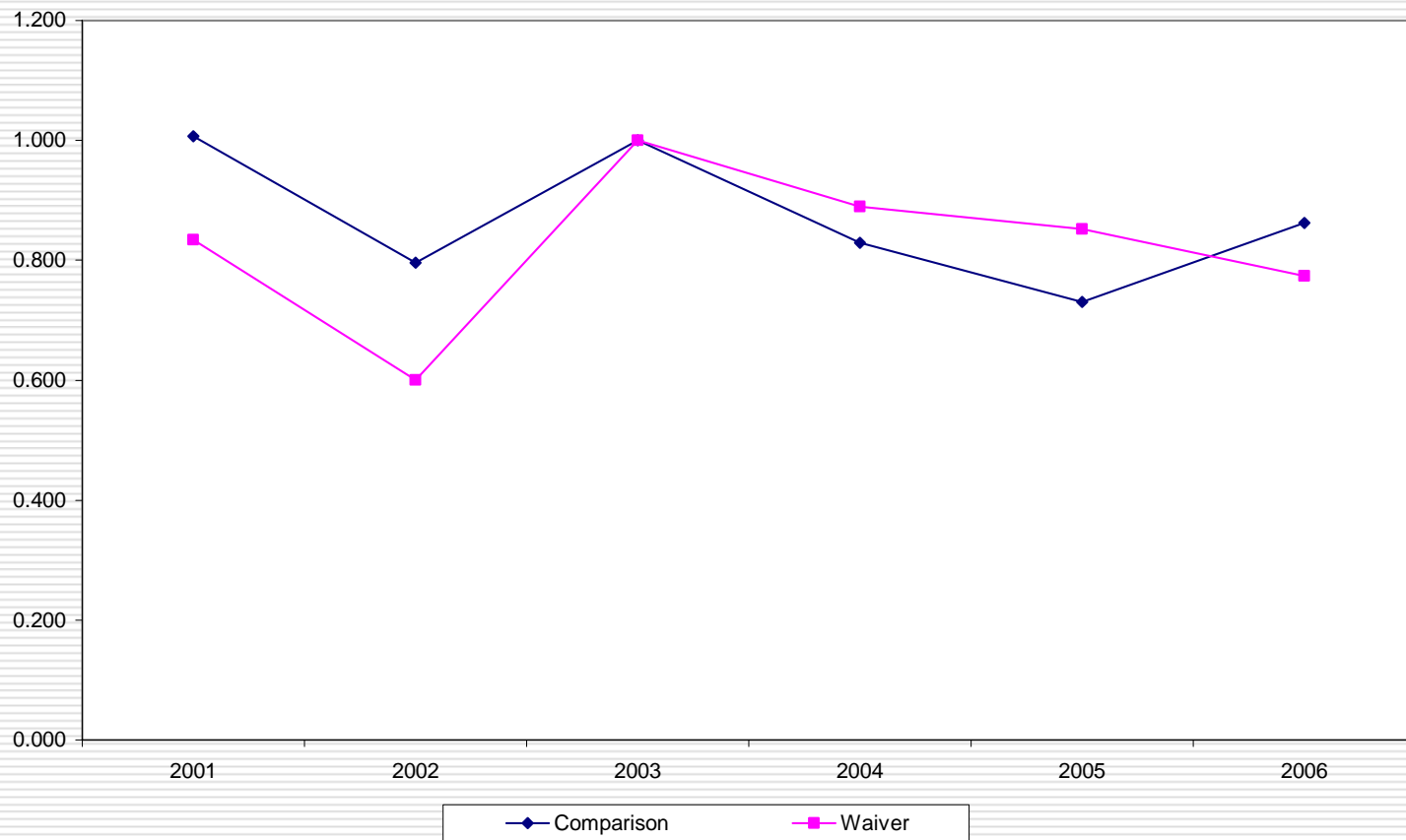
- Rate of placement increased in both Waiver and Comparison counties until 2005 with a slightly greater increase in comparison counties in 2005
- Rate of placement decreased for children in Waiver counties in 2006 while remaining almost steady in comparison counties

Probability of Placement: Rate of Change for Waiver Counties by Activity Group and Comparison Counties Compared to Base Line Year, 2003



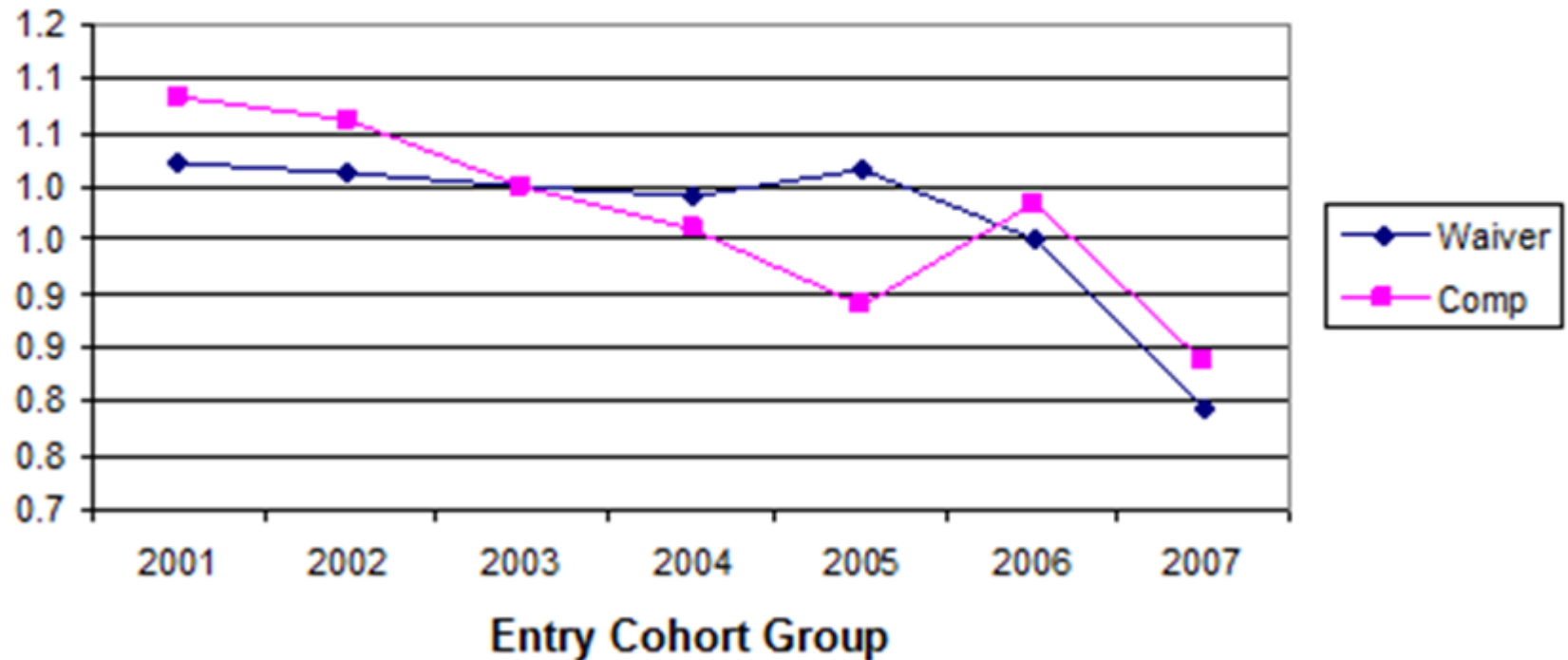
Rate of placement increased the least for children in high activity Waiver counties

**Rate of Change in Repeat Maltreatment Compared to Baseline Year 2003
for Waiver and Comparison Counties**



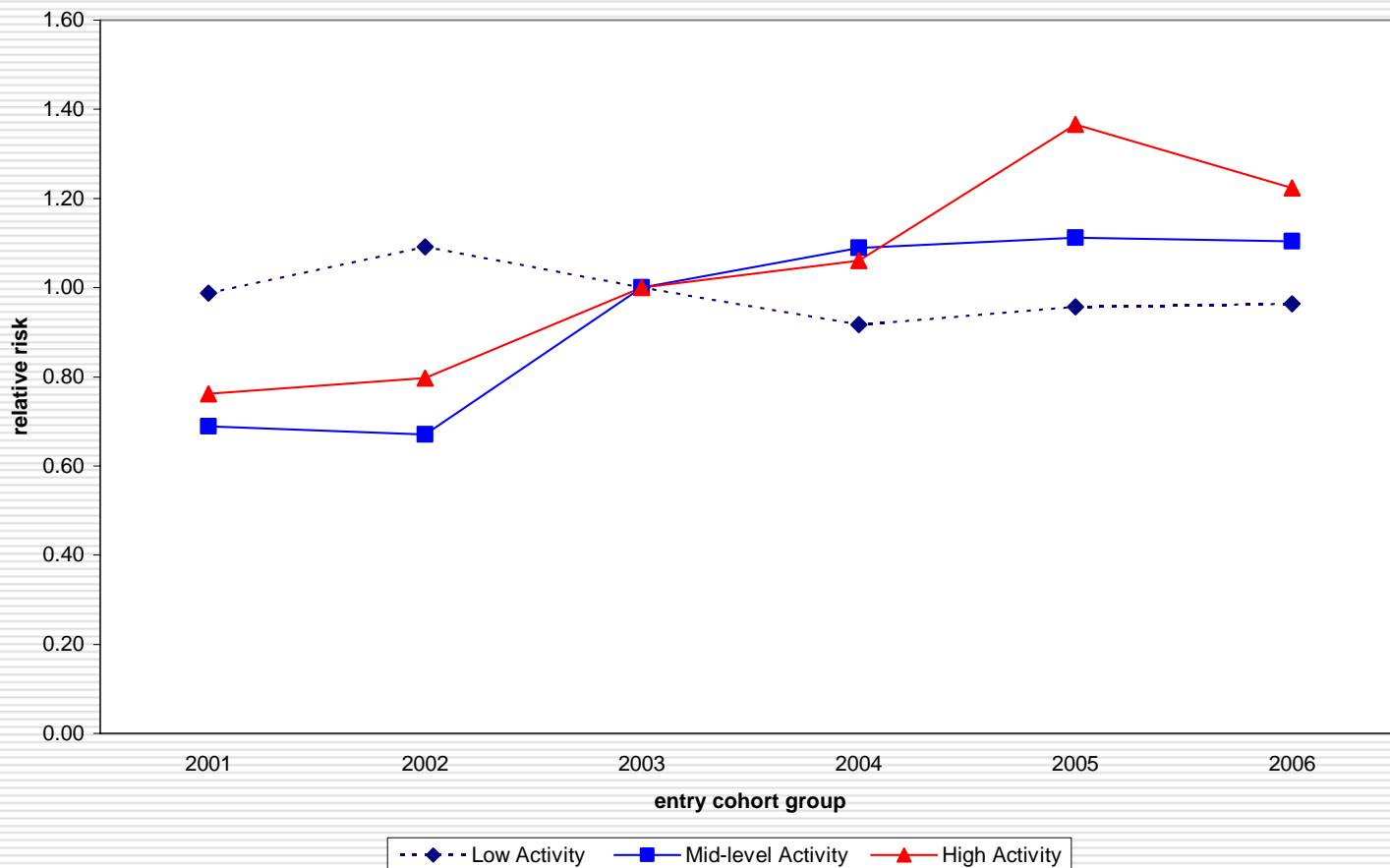
- Repeat maltreatment declined in both Waiver and Comparison counties
- There was no differential change in this rate until 2006.

Relative Risk of Exit Within 1 Year Compared to Base Year, 2003, Using Dichotomous Waiver variable



- Waiver and comparison counties have similar trends in this outcomes

Relative Risk of Exit within One Year for Children Entering Placement for First Time in Waiver Counties, Compared to Base Year 2003



- Children entering placement in high activity counties in sfy05 were about 40% more likely to exit within 1 year than children entering in the baseline year, 2003; the rate of change was 11% for children in mid-level counties

Summary

- Waiver demonstration showed promise in terms of reducing likelihood that children entered placement while keeping children safe
 - Waiver counties included almost all of the urban counties in the state
 - Urban counties shared some characteristics that may have influenced ability of Waiver to stay cost neutral
 - Urban counties in the state were growing at a faster rate than other counties
 - Urban counties had a more extensive (and expensive) array of services including therapeutic homes
 - Urban counties more likely to use child placing agencies
 - Comparison counties used more relative caregivers
-

Lessons Learned

- Possible to reduce likelihood of out of home placement while maintaining safety by moving services up front
-

20/20 Hindsight

- Having virtually all large counties as demonstration group increases the financial risk to the state for even the smallest deviation from cost neutrality
 - .5% of \$1,000 vs. .5% of \$1,000,000
 - The Waiver demonstration varied from county to county – some counties did not do system reform but elected to only participate by using Assisted Guardianship waiver but ALL IV-E costs from these counties were included in cost neutrality calculations
 - Use more precision in defining Waivers and then let counties select into the “Waiver” that interest them
-

20/20 Hindsight

- Cost of care varies by urban versus rural
 - Selection of comparison counties should incorporate more county characteristics
 - Some counties did not actively pursued any Waiver activities.
 - Consider whether counties should be allowed to withdraw from the Waiver as circumstances change
 - There will always be something that cannot be anticipated
-