



Changes and Trends in the Child Welfare Caseload in North Carolina

March 2011

C. Joy Stewart
D. F. Duncan, III

Jordan Institute for Families
UNC-CH School of Social Work
Chapel Hill, NC

March 2011



UNC
SCHOOL OF SOCIAL WORK

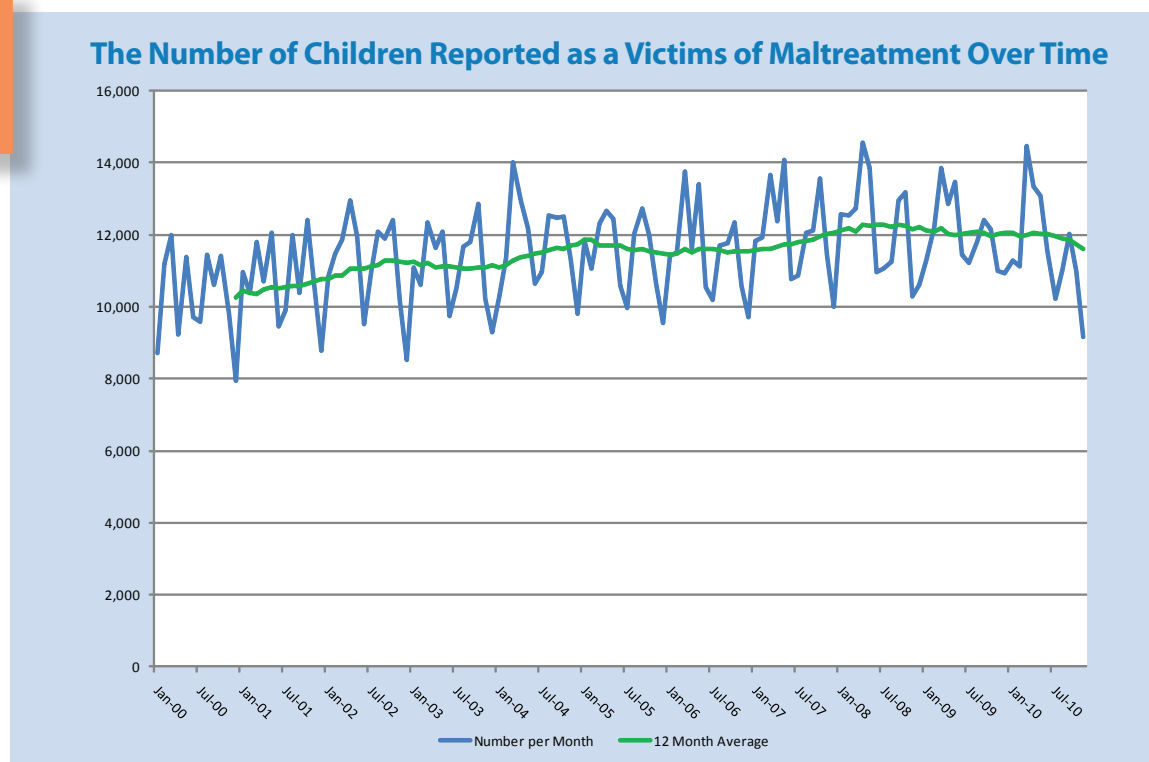
Changes and Trends in the Child Welfare Caseload in North Carolina: March 2011



This report explores changes and trends in the child welfare caseload in North Carolina. This analysis is based on data extracted from the Services Information System (SIS) in early March 2011. These extracts are used to construct and maintain a longitudinal file that tracks the experiences of children and youth who have been involved with the child welfare system in North Carolina. The analysis explores changes in the number of children reported as victims of maltreatment, the number of those reports which are substantiated, and the number of children entering foster care. Long-term trends are also discussed.

Figure One illustrates the changes in the number of reports of maltreatment¹ over time (specific monthly numbers can be found in Appendix A, Table One). As the figure indicates, the number of reports of maltreatment received monthly has increased slightly over time and is illustrated by the twelve month average trend line. From 2000 to 2001, the number of children reported monthly

Figure

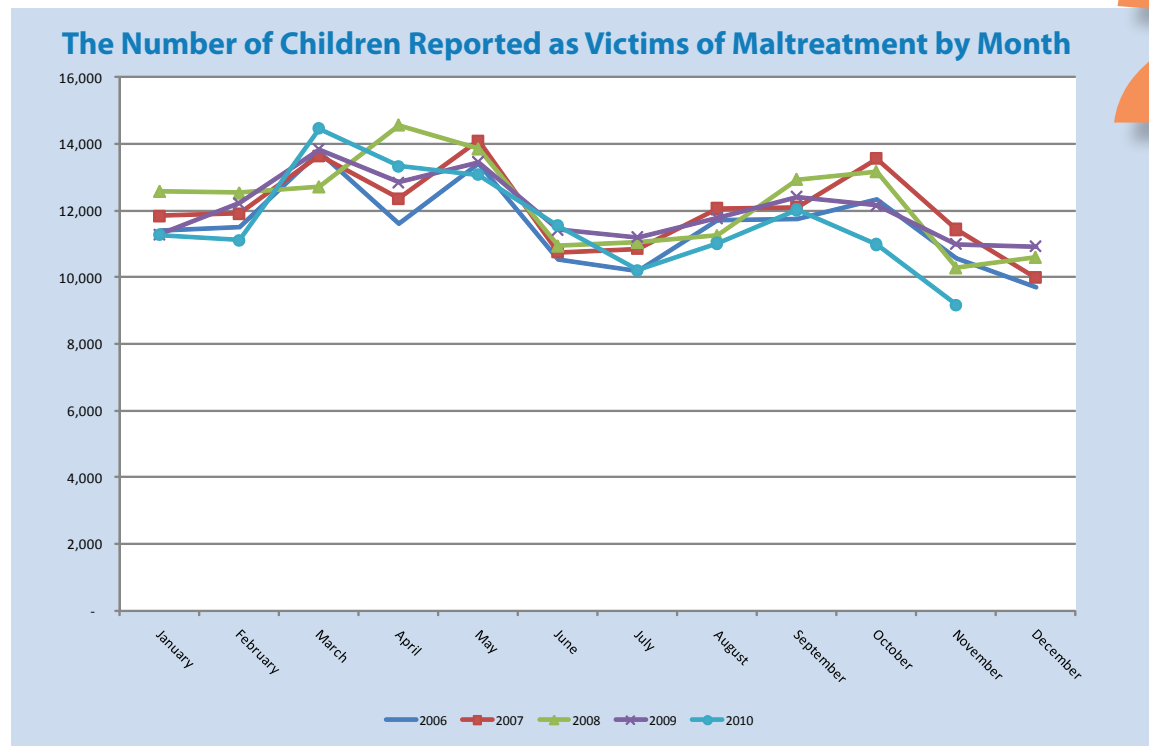


¹ The reports of maltreatment tracked in Figures One through Five of this report do not provide a unique count of children per year. There are a number of instances in which a child may have more than one report investigated within a calendar year. Also, there are some instances where two separate investigations—as indicated by date of case decision on the DSS-5104 form—about an individual child are concluded within a calendar month. Instances where there are separate allegations of maltreatment for an individual child—as indicated by the form identification number—with the same case decision date are collapsed into a single report. Also, state policies require that when a report of maltreatment is received, all children living in the home must be assessed as a possible victim of maltreatment. As a result, the number of children reported as victims of maltreatment could fluctuate based upon the size of families involved, even as the number of reports remains steady.

ranged from 10,500 to 11,000 and then rose above 11,000 to about 11,900 from 2002 to 2004. The number of reports settled around 11,500 in 2005 to 2006 before rising above 12,000 beginning in 2007 to 2009. The monthly number of reports has remained at or slightly below 12,000 in 2010. The decline in reports for October and November 2010 will likely attenuate as data are updated over time.

Figure One also indicates that there is variation from month to month in the number of children reported. That variation is further illustrated in **Figure Two** which shows the pattern of the number of reports received each month by year from January 2006 through November 2010.

2 Figure

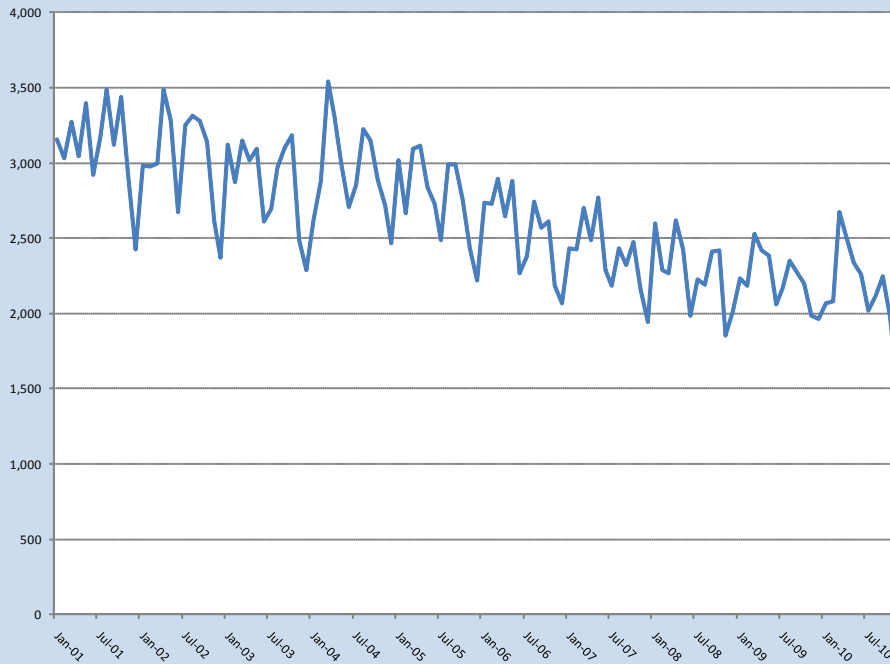


As the figure indicates, the number of reports received generally peaks around May, then falls in June and July before beginning a slight rise through October. The number of reports then declines through December. One purpose of this figure is to gauge whether there has been a rise in the number of reports received corresponding to the downturn in the state's economy. The figure does not suggest that there has been a consistent and sustained increase in the number of reports, although the number of reports received in April 2008 and March 2010 was higher than that for previous years. The number of reports received in May in the years 2008, 2009 and 2010 was slightly lower than that for May 2007. The pattern for 2010 appears to follow that of prior years, although the number of reports was somewhat lower, especially for more recent months. Again this decline will likely attenuate as the data are updated over time.

Figure Three illustrates the number of children whose reports of maltreatment were substantiated. Specific monthly numbers can be found in **Appendix A, Table Two**. A report is considered substantiated if it has a finding of abuse, neglect, abuse and neglect, dependency, or services needed. It does not include instances where the finding was services provided, child protective

Figure 3

The Number of Children with Substantiated Reports of Maltreatment Over Time



services no longer needed. Again, these reports are not based on a unique count of children per year. As the figure indicates, the number of children whose report is substantiated has declined over time, from around 3,100 per month in 2001 to around 2,200 per month in 2009-2010. The decline generally corresponds to the implementation of the Multiple Response System (MRS) between 2001 and 2006, which resulted in an increase in the number of instances where services were provided to the child or the child's family but were no longer needed when the investigation was completed. Under MRS, investigations of reports of maltreatment can follow one of two tracks: investigative or family assessment. The investigative track is similar in most respects to the way maltreatment reports were handled prior to the implementation of MRS. The family assessment track, on the other hand, allows and encourages the provision of services to families that would build on their strengths and eliminate the risk of harm to their children. The apparent decline also could be associated with an increase in the number of instances where the finding is services provided, child protective services no longer needed.

Counties have some flexibility in whether to use the investigative or the family assessment track. According to policy, the choice of response should be based on the approach that best provides for the child's safety, permanence, and well being. State policies require that all reports of abuse follow the investigative track. In addition, the policies require that certain reports of neglect—such as those involving a child fatality or where there is medical neglect of a disabled infant—follow the investigative track as well. For other neglect or dependency reports, county departments of social services may use the family assessment response. The family assessments incorporate System of Care (SOC) principles such as involving the family in decisions, developing an individualized plan which builds on the family's strengths, fostering interagency collaboration to address the family's needs, and developing culturally appropriate responses.

Just as the tracks differ in their approach, the findings differ as well. Under the investigative track, findings for abuse, neglect, or dependency are classified as either substantiated or unsubstantiated. For reports handled through the family assessment track, the findings can be services needed; services recommended; services provided, protective services no longer needed; and services not recommended. The finding of services needed is made when there are questions about the frequency and severity of maltreatment, current safety issues, if there is a risk of harm in the future, or if the child is in need of protective services. The finding of services provided, protective services no longer needed is used if, during the assessment, a determination was made that the threat to the child's safety or the risk of future harm were great enough to require the provision of involuntary services, but the problems were addressed and services were no longer required at the end of the assessment period.

The changes in the type of maltreatment found over time are shown in **Figure Four**. In addition to the types presented in Figure Three (e.g., abuse, neglect, abuse and neglect, dependency, and services needed), this figure contains the count of children whose maltreatment investigation found that services were provided to the child or family during the protective services investigation but that child protective services were no longer needed. These reports do not provide a unique count of children per year. Specific monthly numbers can be found in **Appendix A, Table Three**. As the figure indicates, there has been a decline in the number of children found to be victims of neglect. This decline corresponds with an increase in the number of children where the investigation into the maltreatment concluded that services were needed. In mid-2006, there also was an increase in the number of maltreatment investigations that concluded that as the result of the services provided during the protective services investigation, no additional services were needed. In addition to the decrease in the number of instances where children and youth were found to be victims of neglect, there is a slight decrease over time in the number of children who were found to be victims of abuse.

4 Figure

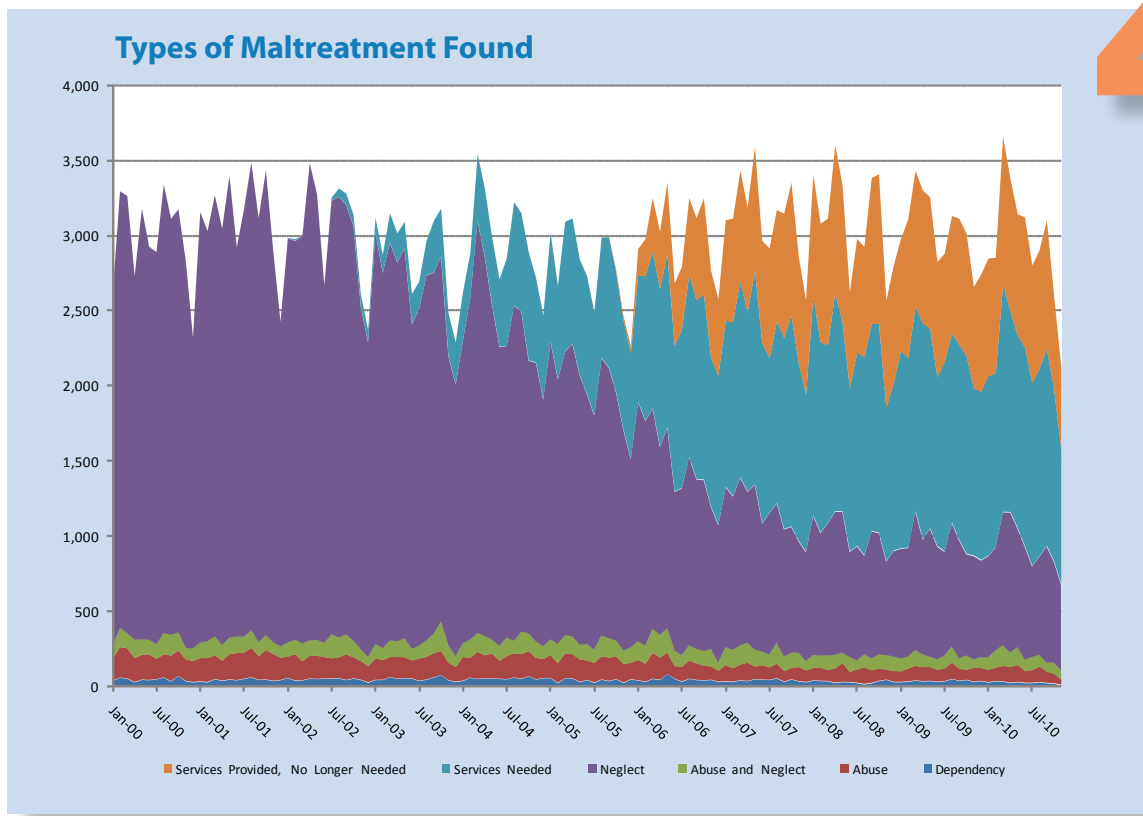


Figure Five illustrates findings from the investigation of maltreatment reports have changed over time. As the figure indicates, while there has been a decrease in the findings of abuse, neglect, abuse and neglect, and dependency, there has also been a decrease in the number of unsubstantiations. This decline in unsubstantiations is likely due to a decrease in the number of investigations routed through the investigative track. That notion is further supported by the increase in the number of findings of services not recommended, an outcome of the family assessment track. Figure Five also shows an increasing number of findings of services recommended. The increase reflects the growth of MRS. Even after the expansion of MRS statewide in 2006, the number of findings of services recommended has continued to grow. As Figure Four suggested earlier, the monthly sum of findings of abuse; neglect; abuse and neglect; dependency; services needed; and services provided, protective services no longer needed, has remained fairly steady over time. With the expansion of MRS, there appears to have been an increase in the number of families and children recommended for services above the number of children determined to be victims of maltreatment.

Figure 5

The Findings from Investigations of Children Reported as Victims of Maltreatment

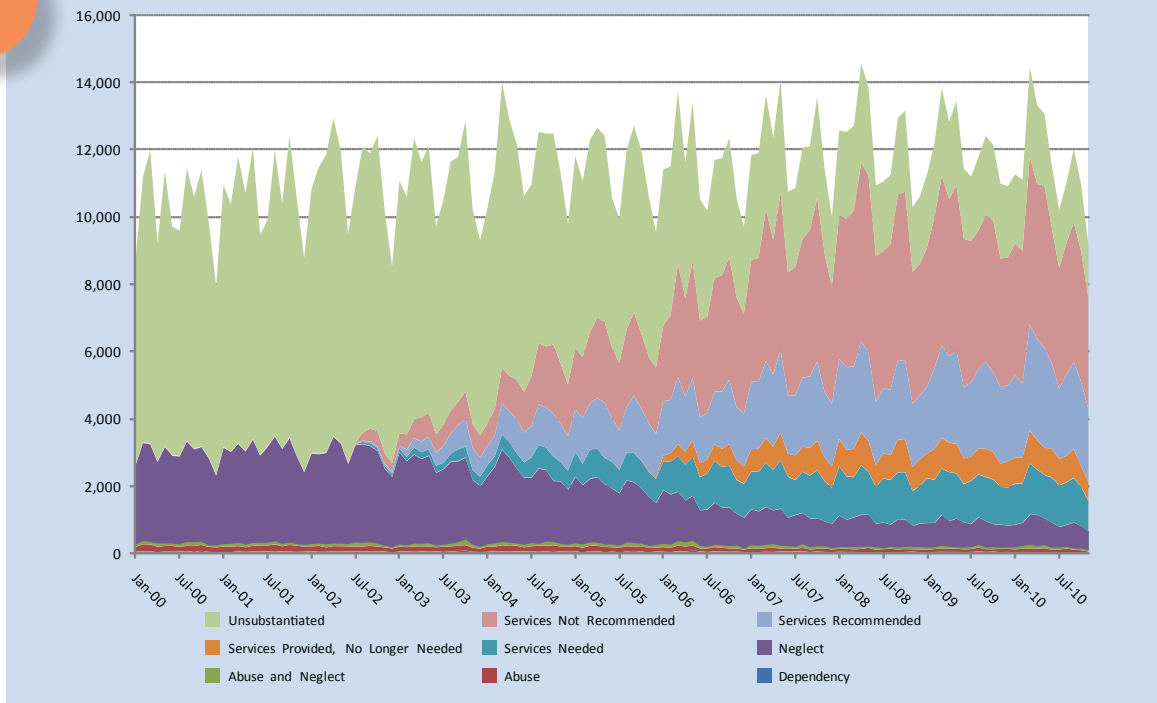
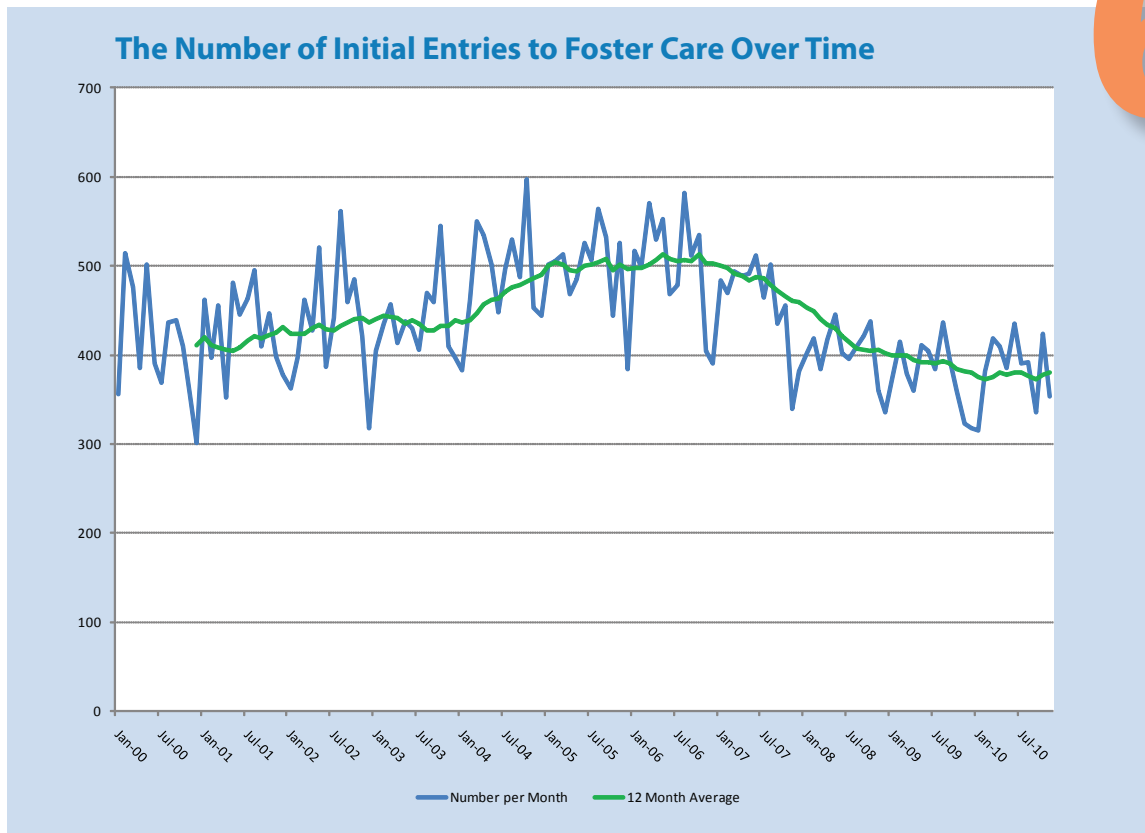


Figure Six reports the number of children entering foster care for the first time. According to the figure, the number of children entering foster care generally ranged between 400 and 500 per month between 2000 and 2004. There appears to have been an increase between 2005 and 2007, when the number of children entering care centered around 500 per month. In mid 2007, the number entering each month began to fall and has ranged between a high of 511 children in June 2007 to a low of 315 in January 2010. The twelve month average trend demonstrates these variations.

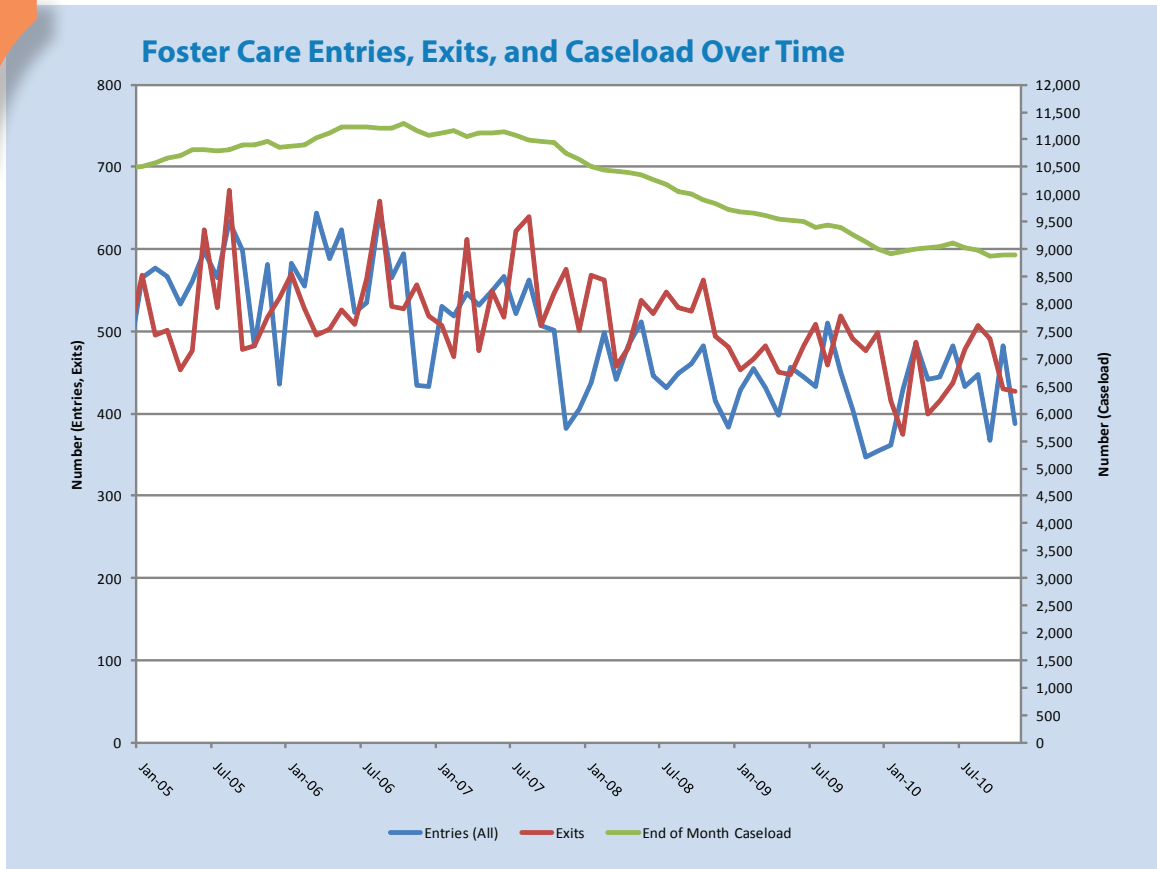


Foster Care Entries, Exits and Caseload

The preceding paragraph explored the initial entries into foster care over time, however, both entries into and exits from foster care determine the total caseload of children in care at any one time. Figure Seven shows the number of children entering care and exiting care by month as well as the number of children on the caseload at the end of the month for January 2005 to November 2010. It is important to note that the entries in Figure Seven include all entries into care and not just those children who entered care for the first time as shown in Figure Six.

Figure Seven shows that the end of month foster care caseload has changed over time from around 10,500 children in early 2005 up to around 11,200 in 2006 and 2007 and then decreasing consistently to about 9,000 in 2010 (the axis for the caseload numbers is on the right hand side of the figure). The growth in the caseload reflected a higher number of entries (an average of around 560 children) than exits (around 530 children) in the 2005 to mid-2007 time period which began to reverse in 2008 as exits outpaced entries due primarily to a decrease in entries rather than an increase in exits. In late 2008 the number of exits per month began to fall to below an average of 500 children. However, entries per month during this time period continued a downward trend to an average of 430 children and thus the overall caseload of children in foster care has continued to decline.

Figure



Summary

Since 2000, there has been a gradual increase in the monthly number of children with reports of maltreatment. In comparing patterns across months for the last several years, there does not appear to have been a sharp increase associated with the current economic downturn. There has been a gradual decrease in the number of reports that are classified as substantiations. That decrease is not as apparent when MRS assessments with a finding of services provided, services no longer needed are included. Also, following the implementation of MRS, there has been a gradual decrease in the combined number of assessments with a finding of unsubstantiated or services not recommended. There has been an increase in the number of cases with an MRS finding of services recommended. Initial entries into foster care increased until 2006-2007 and declined thereafter. The number of children on the foster care caseload at the end of the month increased from 2005 until mid-2007 and then decreased in 2008 to the present, which was primarily driven by declines in the number of children entering care per month.

Appendix A

Table 1

The Number of Children Reported As Maltreated

Month	Number of Children Reported
Jan-01	10,956
Feb-01	10,393
Mar-01	11,785
Apr-01	10,715
May-01	12,041
Jun-01	9,464
Jul-01	9,913
Aug-01	11,983
Sep-01	10,393
Oct-01	12,417
Nov-01	10,551
Dec-01	8,775
Jan-02	10,830
Feb-02	11,483
Mar-02	11,850
Apr-02	12,941
May-02	11,964
Jun-02	9,500
Jul-02	10,918
Aug-02	12,094
Sep-02	11,900
Oct-02	12,414
Nov-02	10,164
Dec-02	8,517
Jan-03	11,080
Feb-03	10,600
Mar-03	12,350
Apr-03	11,649
May-03	12,092

Jun-03	9,730
Jul-03	10,510
Aug-03	11,653
Sep-03	11,788
Oct-03	12,853
Nov-03	10,221
Dec-03	9,304
Jan-04	10,269
Feb-04	11,335
Mar-04	14,004
Apr-04	12,905
May-04	12,170
Jun-04	10,637
Jul-04	10,963
Aug-04	12,531
Sep-04	12,482
Oct-04	12,485
Nov-04	11,297
Dec-04	9,795
Jan-05	11,812
Feb-05	11,066
Mar-05	12,297
Apr-05	12,660
May-05	12,421
Jun-05	10,578
Jul-05	9,949
Aug-05	12,004
Sep-05	12,721
Oct-05	11,981
Nov-05	10,630
Dec-05	9,547
Jan-06	11,413
Feb-06	11,503
Mar-06	13,744

Month	Number of Children Reported
Apr-06	11,622
May-06	13,415
Jun-06	10,536
Jul-06	10,184
Aug-06	11,696
Sep-06	11,752
Oct-06	12,346
Nov-06	10,563
Dec-06	9,703
Jan-07	11,841
Feb-07	11,909
Mar-07	13,640
Apr-07	12,360
May-07	14,089
Jun-07	10,754
Jul-07	10,860
Aug-07	12,060
Sep-07	12,109
Oct-07	13,562
Nov-07	11,437
Dec-07	9,991
Jan-08	12,580
Feb-08	12,529
Mar-08	12,715
Apr-08	14,565
May-08	13,849
Jun-08	10,946
Jul-08	11,055
Aug-08	11,257
Sep-08	12,942
Oct-08	13,171
Nov-08	10,292
Dec-08	10,608
Jan-09	11,287
Feb-09	12,216
Mar-09	13,836
Apr-09	12,839

May-09	13,451
Jun-09	11,428
Jul-09	11,205
Aug-09	11,786
Sep-09	12,415
Oct-09	12,148
Nov-09	10,995
Dec-09	10,921
Jan-10	11,275
Feb-10	11,105
Mar-10	14,461
Apr-10	13,333
May-10	13,073
Jun-10	11,544
Jul-10	10,214
Aug-10	11,016
Sep-10	12,024
Oct-10	10,981
Nov-10	9,170

Table 2

The Number of Children Substantiated (including Services Needed)

Month	Number of Children with a Substantiated Report
Jan-01	3,158
Feb-01	3,032
Mar-01	3,271
Apr-01	3,047
May-01	3,399
Jun-01	2,924
Jul-01	3,178
Aug-01	3,487
Sep-01	3,119
Oct-01	3,435
Nov-01	2,900
Dec-01	2,428
Jan-02	2,985
Feb-02	2,977
Mar-02	2,999
Apr-02	3,483
May-02	3,281
Jun-02	2,671
Jul-02	3,253
Aug-02	3,314
Sep-02	3,280
Oct-02	3,138
Nov-02	2,609
Dec-02	2,370
Jan-03	3,119
Feb-03	2,871
Mar-03	3,149
Apr-03	3,015
May-03	3,091
Jun-03	2,611
Jul-03	2,694
Aug-03	2,966

Sep-03	3,098
Oct-03	3,180
Nov-03	2,484
Dec-03	2,289
Jan-04	2,624
Feb-04	2,882
Mar-04	3,541
Apr-04	3,312
May-04	2,985
Jun-04	2,709
Jul-04	2,849
Aug-04	3,223
Sep-04	3,148
Oct-04	2,890
Nov-04	2,720
Dec-04	2,469
Jan-05	3,017
Feb-05	2,664
Mar-05	3,092
Apr-05	3,114
May-05	2,841
Jun-05	2,730
Jul-05	2,489
Aug-05	2,987
Sep-05	2,988
Oct-05	2,756
Nov-05	2,435
Dec-05	2,220
Jan-06	2,737
Feb-06	2,730
Mar-06	2,896
Apr-06	2,643
May-06	2,880
Jun-06	2,268
Jul-06	2,374
Aug-06	2,745
Sep-06	2,570
Oct-06	2,609
Nov-06	2,186

Month	Number of Children with a Substantiated Report
Dec-06	2,069
Jan-07	2,435
Feb-07	2,424
Mar-07	2,699
Apr-07	2,488
May-07	2,767
Jun-07	2,286
Jul-07	2,183
Aug-07	2,429
Sep-07	2,320
Oct-07	2,471
Nov-07	2,154
Dec-07	1,941
Jan-08	2,595
Feb-08	2,291
Mar-08	2,270
Apr-08	2,618
May-08	2,425
Jun-08	1,983
Jul-08	2,223
Aug-08	2,192
Sep-08	2,414
Oct-08	2,415
Nov-08	1,857
Dec-08	2,011
Jan-09	2,235
Feb-09	2,186
Mar-09	2,528
Apr-09	2,417
May-09	2,384
Jun-09	2,058
Jul-09	2,162
Aug-09	2,348
Sep-09	2,274
Oct-09	2,199
Nov-09	1,986

Dec-09	1,961
Jan-10	2,068
Feb-10	2,082
Mar-10	2,674
Apr-10	2,499
May-10	2,336
Jun-10	2,258
Jul-10	2,020
Aug-10	2,115
Sep-10	2,249
Oct-10	1,976
Nov-10	1,572

Table 3

The Number of Children by Type of Finding (Not Based on a Unique Count of Children; Some Children May Have Multiple Reports Investigated at the Same Time)

Month	Dependency	Abuse	Abuse and Neglect	Neglect	Services Needed	Services Provided, No Longer Needed	Services Recommended	Services Not Recommended	Unsubstantiated
Jan-01	33	156	108	2,861	0	0	0	0	7,798
Feb-01	29	161	115	2,727	0	0	0	0	7,361
Mar-01	49	159	129	2,934	0	0	1	2	8,511
Apr-01	38	134	107	2,768	0	0	0	2	7,666
May-01	47	170	113	3,069	0	2	0	1	8,639
Jun-01	42	181	113	2,587	1	0	1	3	6,536
Jul-01	51	175	109	2,843	0	0	0	1	6,734
Aug-01	61	197	120	3,109	0	0	0	0	8,496
Sep-01	44	159	98	2,818	0	0	0	3	7,271
Oct-01	46	198	100	3,091	0	0	4	3	8,975
Nov-01	37	180	80	2,602	1	0	2	5	7,644
Dec-01	43	150	78	2,157	0	0	0	2	6,345
Jan-02	56	143	99	2,687	0	0	0	9	7,836
Feb-02	39	177	98	2,651	12	0	0	10	8,496
Mar-02	41	128	121	2,709	0	0	0	3	8,848
Apr-02	52	154	105	3,172	0	0	0	0	9,458
May-02	50	155	109	2,963	4	0	4	2	8,677
Jun-02	52	144	99	2,376	0	0	4	4	6,821
Jul-02	52	136	163	2,883	19	0	0	25	7,640
Aug-02	54	141	135	2,929	55	0	38	234	8,508
Sep-02	43	171	135	2,856	75	0	42	380	8,198
Oct-02	53	142	114	2,755	74	0	44	445	8,787
Nov-02	44	126	81	2,276	82	0	62	302	7,191
Dec-02	27	110	64	2,090	79	0	53	249	5,845
Jan-03	44	144	98	2,735	98	0	84	366	7,511
Feb-03	44	132	83	2,494	118	0	204	457	7,068
Mar-03	62	134	114	2,643	196	0	274	543	8,384
Apr-03	51	147	107	2,517	193	0	311	714	7,609
May-03	55	140	129	2,592	175	0	374	704	7,923
Jun-03	53	121	80	2,157	200	0	389	531	6,199
Jul-03	37	149	89	2,241	178	0	495	624	6,697
Aug-03	46	152	112	2,426	230	0	596	682	7,409
Sep-03	60	163	132	2,399	344	0	719	674	7,297

Month	Dependency	Abuse	Abuse and Neglect	Neglect	Services Needed	Services Provided, No Longer Needed	Services Recommended	Services Not Recommended	Unsubstantiated
Oct-03	76	161	198	2,426	319	0	822	810	8,041
Nov-03	41	118	118	1,921	286	0	648	709	6,380
Dec-03	31	100	74	1,804	280	2	563	646	5,804
Jan-04	38	159	95	2,014	318	2	565	669	6,409
Feb-04	58	134	124	2,271	295	0	618	769	7,066
Mar-04	50	182	128	2,741	440	0	915	1,060	8,488
Apr-04	55	153	131	2,515	458	0	915	1,047	7,631
May-04	51	169	95	2,220	450	0	1,001	1,172	7,012
Jun-04	51	120	103	1,986	449	0	884	1,200	5,844
Jul-04	48	156	126	1,937	582	0	933	1,466	5,715
Aug-04	59	163	85	2,230	686	0	1,206	1,816	6,286
Sep-04	51	166	152	2,124	655	3	1,188	1,810	6,333
Oct-04	68	167	123	1,811	721	3	1,263	2,050	6,279
Nov-04	47	144	112	1,852	565	0	1,127	1,790	5,660
Dec-04	55	128	89	1,636	561	0	1,027	1,522	4,777
Jan-05	56	154	107	1,975	725	3	1,253	1,829	5,710
Feb-05	23	133	130	1,760	618	4	1,358	1,803	5,237
Mar-05	55	165	125	1,884	863	0	1,373	2,118	5,714
Apr-05	54	162	121	1,943	834	0	1,503	2,386	5,657
May-05	30	150	102	1,790	769	2	1,638	2,392	5,548
Jun-05	43	131	112	1,657	787	2	1,291	2,100	4,455
Jul-05	26	131	92	1,554	686	1	1,169	1,989	4,301
Aug-05	46	155	142	1,845	799	1	1,358	2,316	5,342
Sep-05	36	157	133	1,794	868	2	1,699	2,472	5,560
Oct-05	48	152	110	1,643	803	13	1,535	2,234	5,443
Nov-05	25	125	94	1,459	732	28	1,409	1,978	4,780
Dec-05	47	111	106	1,251	705	47	1,271	1,982	4,027
Jan-06	41	136	128	1,590	842	175	1,613	2,241	4,647
Feb-06	32	120	123	1,493	962	248	1,578	2,520	4,427
Mar-06	51	174	162	1,462	1,047	355	1,991	3,362	5,140
Apr-06	44	149	154	1,246	1,050	382	1,633	2,923	4,041
May-06	82	146	164	1,333	1,155	475	1,852	3,485	4,723
Jun-06	51	85	106	1,055	971	415	1,361	2,879	3,613
Jul-06	33	99	81	1,108	1,053	420	1,375	2,863	3,152
Aug-06	51	122	105	1,249	1,218	506	1,556	3,375	3,514

Month	Dependency	Abuse	Abuse and Neglect	Neglect	Services Needed	Services Provided, No Longer Needed	Services Recommended	Services Not Recommended	Unsubstantiated
Sep-06	43	111	100	1,126	1,190	547	1,693	3,461	3,481
Oct-06	41	98	101	1,136	1,233	640	1,915	3,637	3,545
Nov-06	44	89	121	939	993	578	1,579	3,268	2,952
Dec-06	31	74	55	915	994	510	1,571	2,967	2,586
Jan-07	33	110	122	1,062	1,108	668	2,016	3,610	3,112
Feb-07	31	90	126	1,019	1,158	690	1,976	3,692	3,127
Mar-07	41	105	132	1,113	1,308	736	2,284	4,497	3,424
Apr-07	36	123	136	1,001	1,192	698	2,139	3,999	3,036
May-07	49	84	116	1,095	1,423	824	2,451	4,672	3,375
Jun-07	45	97	94	848	1,202	681	1,742	3,643	2,402
Jul-07	44	84	89	939	1,027	733	1,766	3,840	2,338
Aug-07	54	98	141	926	1,210	742	2,056	4,117	2,716
Sep-07	32	71	99	845	1,273	826	2,112	4,350	2,501
Oct-07	47	77	104	836	1,407	883	2,350	4,874	2,984
Nov-07	35	95	98	740	1,186	711	1,929	4,111	2,532
Dec-07	29	79	65	723	1,045	629	1,875	3,488	2,058
Jan-08	40	84	90	924	1,457	811	2,366	4,277	2,531
Feb-08	37	89	83	813	1,269	789	2,453	4,411	2,585
Mar-08	36	74	101	876	1,183	844	2,442	4,641	2,518
Apr-08	24	97	94	949	1,454	984	2,721	5,297	2,945
May-08	30	126	73	936	1,260	912	2,619	5,281	2,612
Jun-08	29	68	102	698	1,086	641	1,883	4,338	2,101
Jul-08	24	90	63	757	1,289	756	1,915	4,093	2,068
Aug-08	16	111	90	655	1,320	734	1,948	4,319	2,064
Sep-08	23	85	84	842	1,380	970	2,362	4,933	2,263
Oct-08	37	82	97	807	1,392	993	2,316	5,028	2,419
Nov-08	45	67	101	621	1,023	710	1,884	3,921	1,920
Dec-08	30	74	99	700	1,108	787	1,898	3,908	2,004
Jan-09	30	71	90	727	1,317	743	1,994	4,131	2,184
Feb-09	33	87	82	722	1,262	923	2,406	4,483	2,218
Mar-09	40	98	107	922	1,361	903	2,752	5,043	2,610
Apr-09	35	94	89	761	1,438	885	2,556	4,678	2,303
May-09	37	93	71	851	1,332	873	2,756	4,924	2,514
Jun-09	31	80	75	746	1,126	768	2,126	4,395	2,081
Jul-09	35	85	88	690	1,264	718	2,201	4,204	1,920

Month	Dependency	Abuse	Abuse and Neglect	Neglect	Services Needed	Services Provided, No Longer Needed	Services Recommended	Services Not Recommended	Unsubstantiated
Aug-09	50	110	109	820	1,259	783	2,349	4,123	2,183
Sep-09	37	81	74	781	1,301	840	2,583	4,368	2,350
Oct-09	44	68	98	672	1,317	815	2,356	4,531	2,247
Nov-09	31	94	59	686	1,116	673	2,281	3,825	2,230
Dec-09	37	87	74	643	1,120	782	2,253	3,802	2,123
Jan-10	28	82	88	671	1,199	781	2,440	3,920	2,066
Feb-10	36	90	118	684	1,154	772	2,199	3,942	2,110
Mar-10	34	103	141	883	1,513	984	3,154	4,977	2,672
Apr-10	24	107	99	930	1,339	883	3,002	4,601	2,348
May-10	30	113	122	789	1,282	807	2,972	4,811	2,147
Jun-10	24	80	77	750	1,327	865	2,531	4,032	1,858
Jul-10	24	85	90	602	1,219	783	2,094	3,581	1,736
Aug-10	29	105	81	651	1,249	789	2,422	3,901	1,789
Sep-10	23	76	62	773	1,315	854	2,586	4,150	2,185
Oct-10	20	64	79	668	1,145	620	2,502	3,881	2,002
Nov-10	10	35	65	565	897	547	2,173	3,308	1,570

This research is funded through a contract with the North Carolina Division of Social Services. The views expressed are those of the authors. Any errors due to the interpretation of the analysis of the data are the authors' alone.

Additional information on the child welfare program at the state or county level is available through the Management Assistance for Child Welfare, Work First, and Food and Nutrition Services web site, <http://ssw.unc.edu/ma/>.

A PDF version of this report can be found at http://sasweb.unc.edu/cgi-bin/broker?_service=default&_program=wrkfirst.help.sas&county=North%20Carolina&label=&help=papers&entry=2&anchor=

This report was designed by Rea Gibson of the UNC-CH School of Social Work.