

The Impact of the Pandemic on Child Welfare Caseload Trends



QUARTERLY
REPORT

JULY
2021

C. Joy Stewart • Dean F. Duncan, III • Steve Guest • Katy Malley • Wanda Reives

**Creating Indicators and Improving Outcomes:
Analytic Assistance for Child Welfare, Work First,
Food and Nutrition Services in North Carolina**

UNC-CH SCHOOL OF SOCIAL WORK
CHAPEL HILL, NC
JULY 2021

The Impact of the Pandemic on Child Welfare Caseload Trends

(Quarterly Report: July 2021)

Main Points

- The COVID-19 pandemic had an unparalleled, widespread, and sustained impact on child welfare.
- There were significant decreases in maltreatment reports, substantiations, non-substantiated findings, entries and exits from foster care in 2020.
- Declines in referrals from educational personnel due to school closures and ongoing disruptions explained much of the decrease in maltreatment reports in 2020.
- The rate of decline was not as steep for substantiations, entries into foster care, and exits from foster care as that of non-substantiated findings and overall reports in 2020 suggesting that the child welfare system continued to respond to the majority of children most at-risk and worked to achieve permanence for most of the children already in care.
- This report demonstrates the ongoing impact of the pandemic on child welfare caseloads, which have not recovered to pre-pandemic levels and instead are continuing or declining in early 2021.

This report explores changes and trends in the child welfare caseload in North Carolina. This report covers the time period of the Covid-19 pandemic, which we define as beginning on March 16, 2020 when the governor ordered the statewide closure of North Carolina public schools. While the order only applied to public schools, many private schools and child care facilities also closed at least temporarily (Gordon, 2020; Ovaska, 2020). Eventually, the governor canceled the remainder of the school year and by June 2020, facilities were only serving about a third of all children enrolled in child care programs before the pandemic (Rivest, 2020). In addition, all children and their families were subject to statewide stay-at-home orders, prohibitions of large gatherings, and closures of businesses and recreational facilities that caused significant and unparalleled alterations to daily life.

This analysis is based on data extracted from state child welfare databases in July 2021. These extracts are used to construct and maintain a longitudinal file that tracks the experiences of

children and youth who have been involved with the child welfare system in North Carolina. The analysis explores changes in the number of children reported as victims of maltreatment, the number of those reports which are substantiated, and the number of children entering and exiting foster care. Long-term trends are also discussed.

Figure One illustrates the changes in the number of children assessed for maltreatment¹ over time (specific monthly numbers can be found in Appendix A, Table One). As the figure indicates, while numbers fluctuate monthly, the number of children assessed monthly remained above 12,000 in 2016-2017 until a decline to just below 12,000 in 2018 which is illustrated by the twelve-month average trend line. In December 2018, the monthly number of children assessed declined significantly to 9,450 children, which coincides with a major winter storm that produced record snowfalls and widespread power outages across the state (Samenow, 2018). The number of children assessed per month rebounded in January to 12,876 and the twelve-month average went above 12,000 again by the end of 2019. At the beginning of 2020, the number per month was similar to previous years until a decline in March 2020 and a precipitous drop to 8,047 in April 2020 which is apparently due to the pandemic. In the past twenty years, there has only been one month in which the number was similarly low at 7,957 children in December 2000. There was also an unusual weather event in that month with a snowstorm that significantly impacted the eastern part of the state which is typically less likely to be affected by snowfall (Badgett, Baines, Blaes, Hartfield, Keeter, n.d.). The number of children assessed per month increased to 11,953 in October 2020. The number declined significantly again through the end of 2020 and remained at about 9,500 until an increase to 11,202 in March 2021. The declining rate during this period coincides with holiday breaks as well as the winter surge of COVID cases experienced by the state (“Tracking coronavirus in North Carolina”, 2021). The trend for 2020 and early 2021 shows that the number of children assessed per month continues to be impacted by the pandemic in contrast to the temporary effect of weather events.

¹The number of children tracked in Figures One through Five of this report do not provide a unique count of children per year. There are a number of instances in which a child may be counted more than once in the analyses for this report. For example, a child may have more than one report investigated within a calendar year. Also, there are some instances where two separate investigations about an individual child are concluded within the same calendar month. However, instances where there are separate allegations of maltreatment for an individual child with the same case decision date are collapsed into a single report. Also, state policies require that when a report of maltreatment is received, all children living in the home must be assessed as a possible victim of maltreatment. As a result, the number of children reported as victims of maltreatment could fluctuate based upon the sizes of families involved, even as the number of reports remains steady.

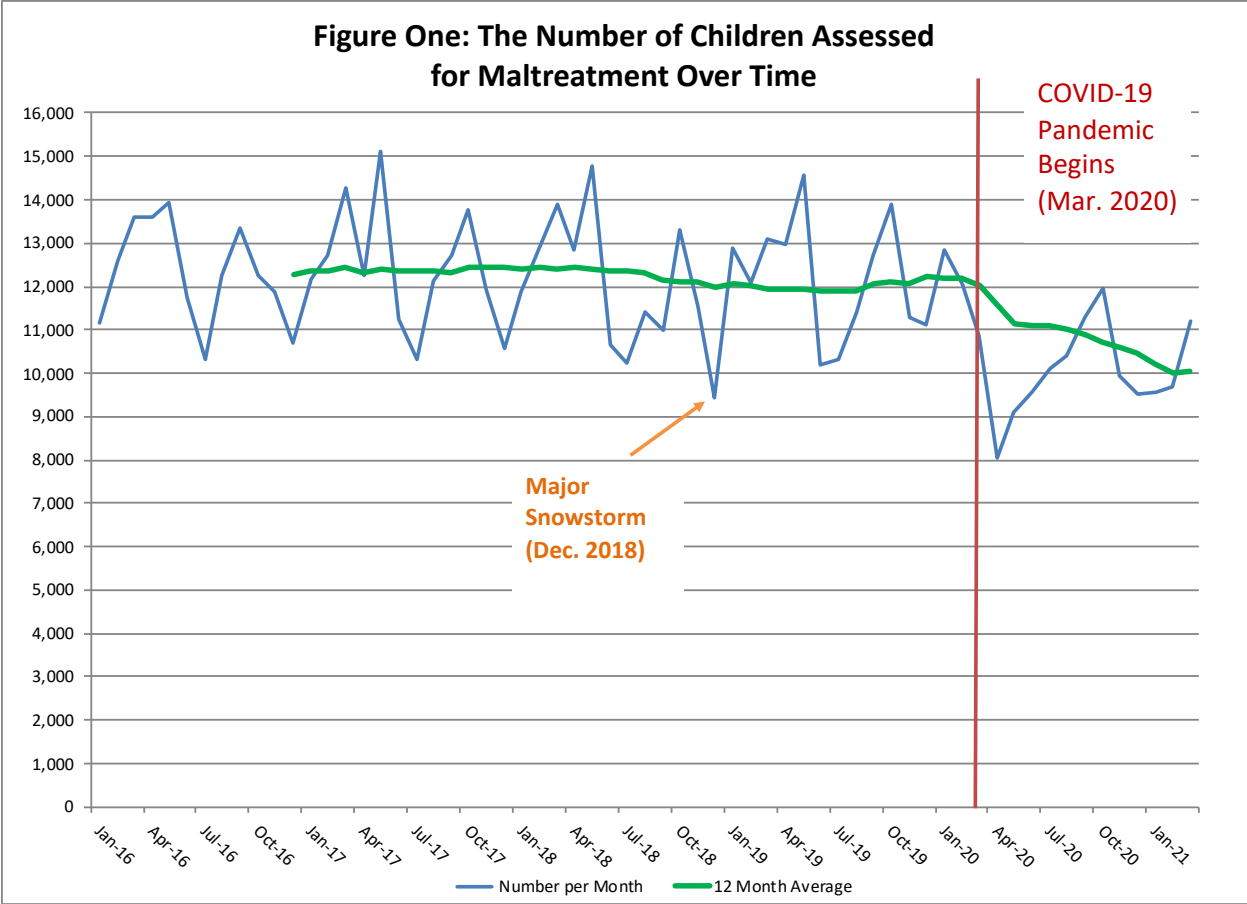
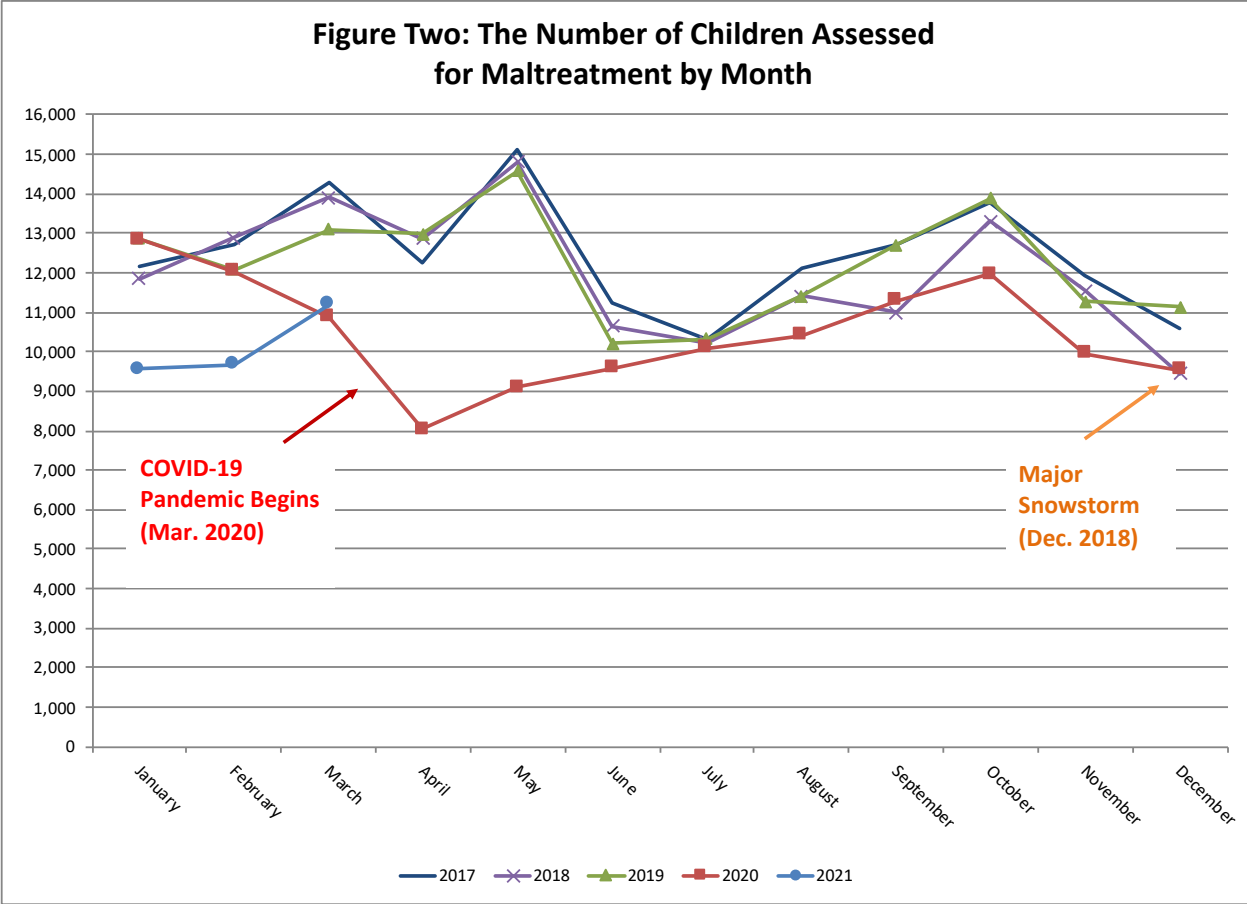


Figure Two shows the pattern of the number of children assessed each month by year from January through December for 2017 to 2020 and January through March for 2021. This figure is helpful in showing seasonal variation and offers an even more stark view of the pandemic’s effect. Much of the usual seasonal variation appears tied to the school calendar. As the figure indicates, the number of children assessed generally peaks in May, then falls in June and July reflecting declining reports from educational personnel during summer months. The number of children increases in August as school starts and then rises through October. The number of children assessed then declines through December reflecting periods of holidays and school breaks. As noted earlier weather events may affect these patterns, such as the December 2018 winter storm. The pattern for 2020 was far different with the severe declines in March and April 2020 before a slow increase through October 2020 then declining through December 2020 and ending the year well below pre-pandemic levels. Early 2021 numbers continued to show the ongoing impact of the pandemic in reducing the number of children assessed per month.



In **Figure Three**, we take a closer look at the referral sources for children who were assessed (specific monthly numbers can be found in Appendix A, Table Two). In this figure, the time period shown is shortened to January 2018 to March 2021 so that trends in the most recent months are more easily viewed. As the figure illustrates, the declines in referrals from educational personnel in the summer months, in particular, account for the overall decrease in assessments for these months. While there is monthly variation, referrals from other sources tend to be more consistent over time. At the onset of the pandemic in March 2020, educational personnel referrals decreased significantly and continued to fall through July 2020 with an uptick in August 2020 through October 2020. Educational personnel referrals then declined again through the end of 2020 before rising through March 2021. Interestingly, January and February 2021 showed an increase in education personnel referrals while referrals from most other sources continued to decrease slightly. Again this time period coincides with the winter surge in COVID cases. However, educational personnel referrals are still far below pre-pandemic levels. In the period of continued decline for educational referrals from April 2020 to July 2020, referrals tended to increase for human services personnel, non-

relative, relative, anonymous, and parental sources and hold steady for law or court personnel and medical provider sources. To some extent, this pattern can be seen in June and July for other years, but it is certainly more pronounced in the period after the pandemic began. Thus, we conclude that the majority of decreases in the number of children assessed during the pandemic were related to fewer referrals from educational personnel thus far. However, referrals from other sources did appear to be affected by the winter surge of COVID cases at the beginning of 2021.

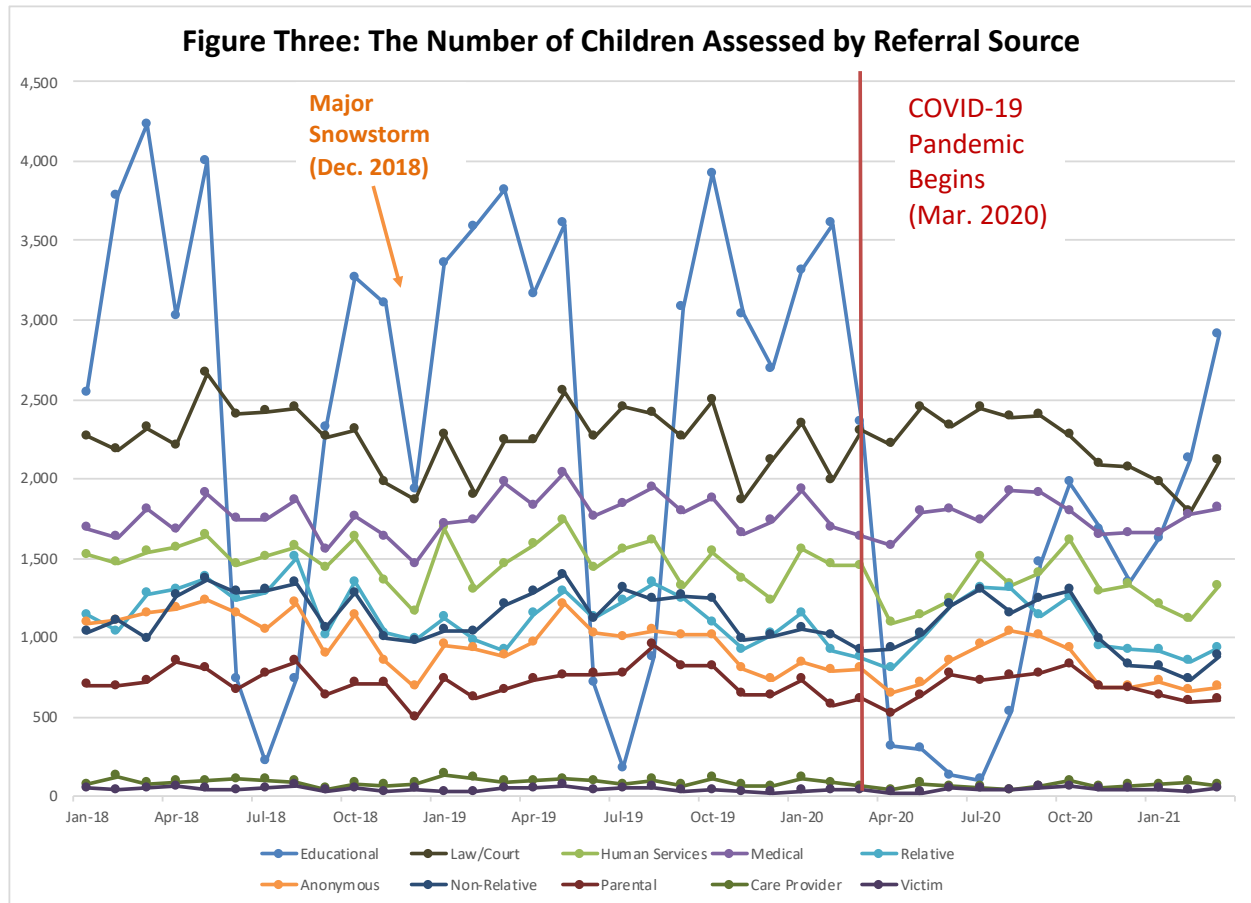


Figure Four illustrates the number of children whose maltreatment reports were substantiated. Specific monthly numbers can be found in Appendix A, Table Three. A report is considered substantiated if there is a finding of abuse, neglect, abuse and neglect, dependency, or services needed. These findings indicate that child protective services confirmed that a child was maltreated and/or that further services are needed to address concerns. It does not include instances where the finding was services provided, child protective services no longer needed. Again, these reports are not based on a unique count of children per year. Given that they are related, much of the trends in the number of

substantiations reflect those of the assessments, although they are not entirely dependent as substantiations are based on case decisions related to the allegations made in reports. The average number per month remained at about 2,000 until early 2018 when a decline to about 1,900 began and went through 2019. Like the number of assessments, the number of substantiations decreased at the onset of the pandemic, although the drop was not as severe, and was actually more pronounced in December 2018. Still the average of about 1,700 for 2020 is lower than the pre-pandemic level. Early 2021 substantiations are showing an even further decline.

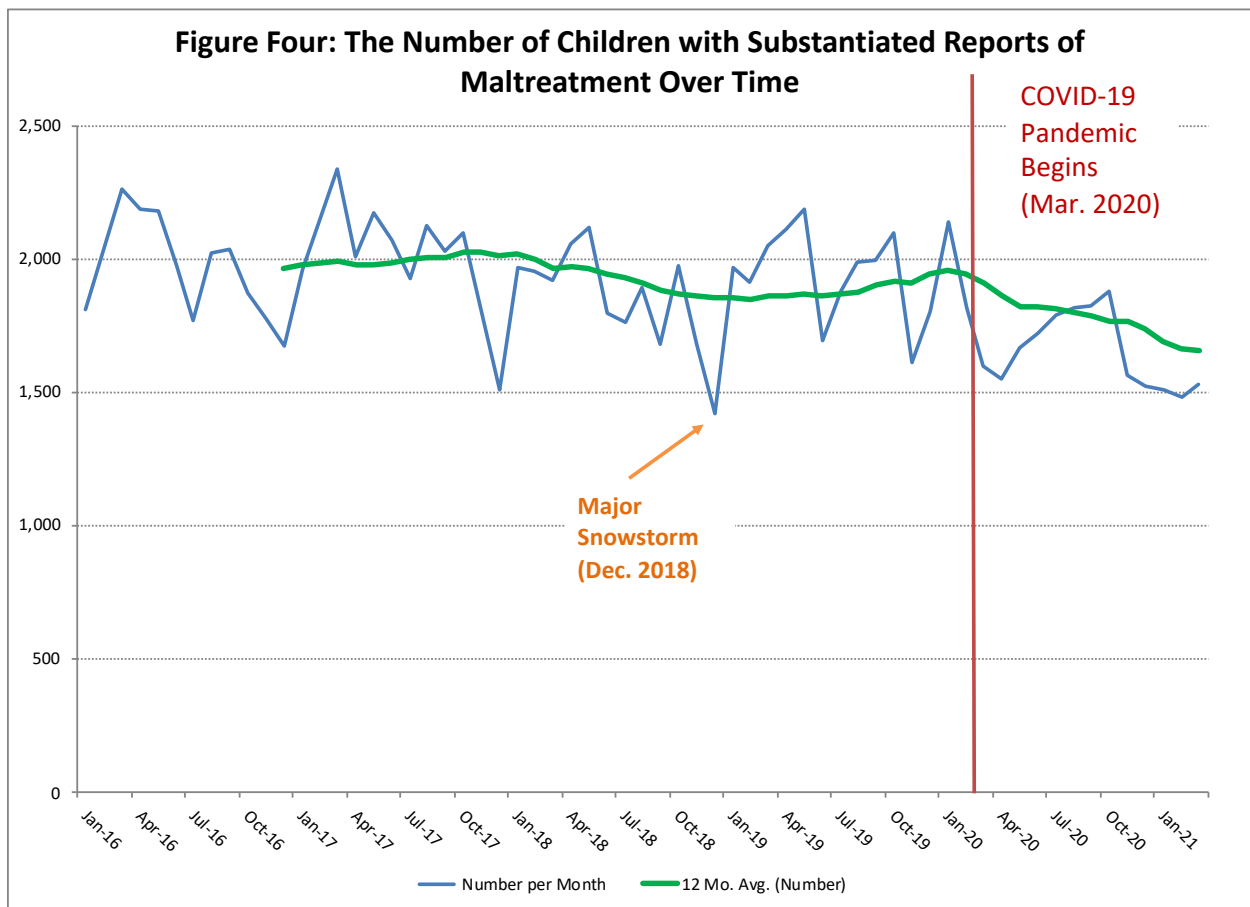


Figure Five illustrates the number of children by assessment finding type over time (see Appendix A, Table Four for specific monthly numbers). Unlike Figure Four, this figure includes all finding types and not just those that are “substantiated” (abuse, neglect, abuse and neglect, dependency, and services needed). While the monthly numbers fluctuate, the percentage of substantiated reports consistently makes up about 16% of findings while all others are about 84% (services provided, services recommended, services not recommended, and unsubstantiated). This trend was noticeably different after the onset of the pandemic.

While numbers decreased across finding types, the substantiated reports made up a higher percentage than usual at about 19% versus 81% for all other types in April 2020 indicating that substantiated reports did not decline at the same rate as non-substantiated finding types. This contrasts with the December 2018 snowstorm in which all finding types declined at similar rates. Thus, even in the face of declining reports overall due to the pandemic, it appears that the child protective services system continued to detect and address the majority of the most severe cases of maltreatment.

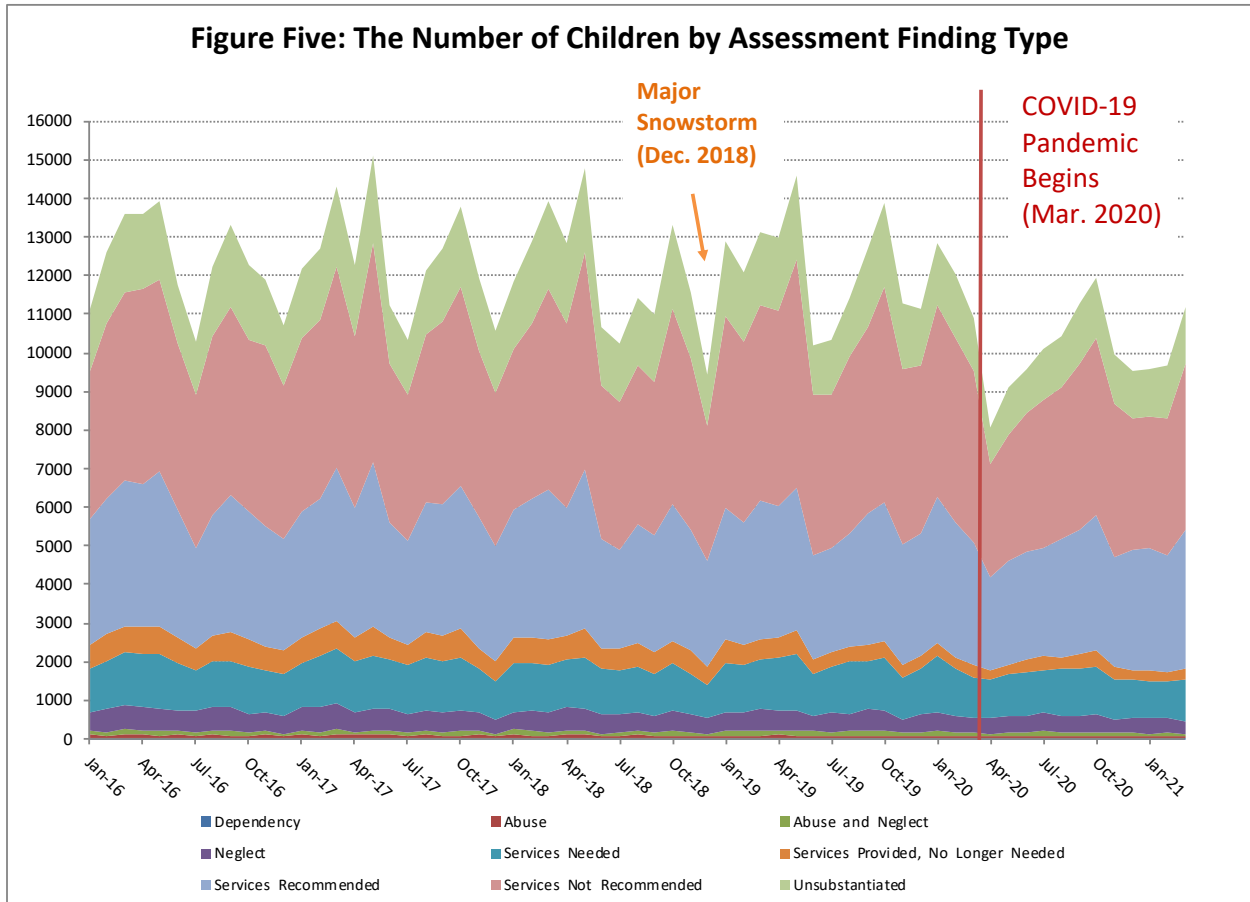


Figure Six reports the number of children entering foster care for the first time, the total entries (including re-entries into care), and the twelve-month average for total entries. Children enter foster care when child protective services determines that the risk of harm to a child is too great in order to safely remain in the home and obtain a court order to assume custody of the child. Specific monthly numbers can be found in Appendix A, Table Five. Over time, about 83% to 88% of children entering care each month are coming into care for the first time. According to the figure, the twelve-month average shows that there were about 514 children entering care per month in 2016 which increased slightly to about 523 in 2017.

The number decreased to about 483 in 2018 and slightly again to 481 in 2019. As we saw in other caseload figures, both the initial and total number of entries decreased significantly after the onset of the pandemic, in particular in April 2020 with a low for initial entries of 271 and 325 for total entries, which were lows not seen in the past twenty years. The number of entries began to rise again in May 2020, however, the average for 2020 at 448 as well as that of January through May 2021 at 457 were still below the pre-pandemic level. These annual trends are also notable in that entries into care, like substantiations, did not decline as greatly as maltreatment reports overall. Again, this would suggest that the child welfare system, including the courts, continued to respond to the majority of children at the most risk.

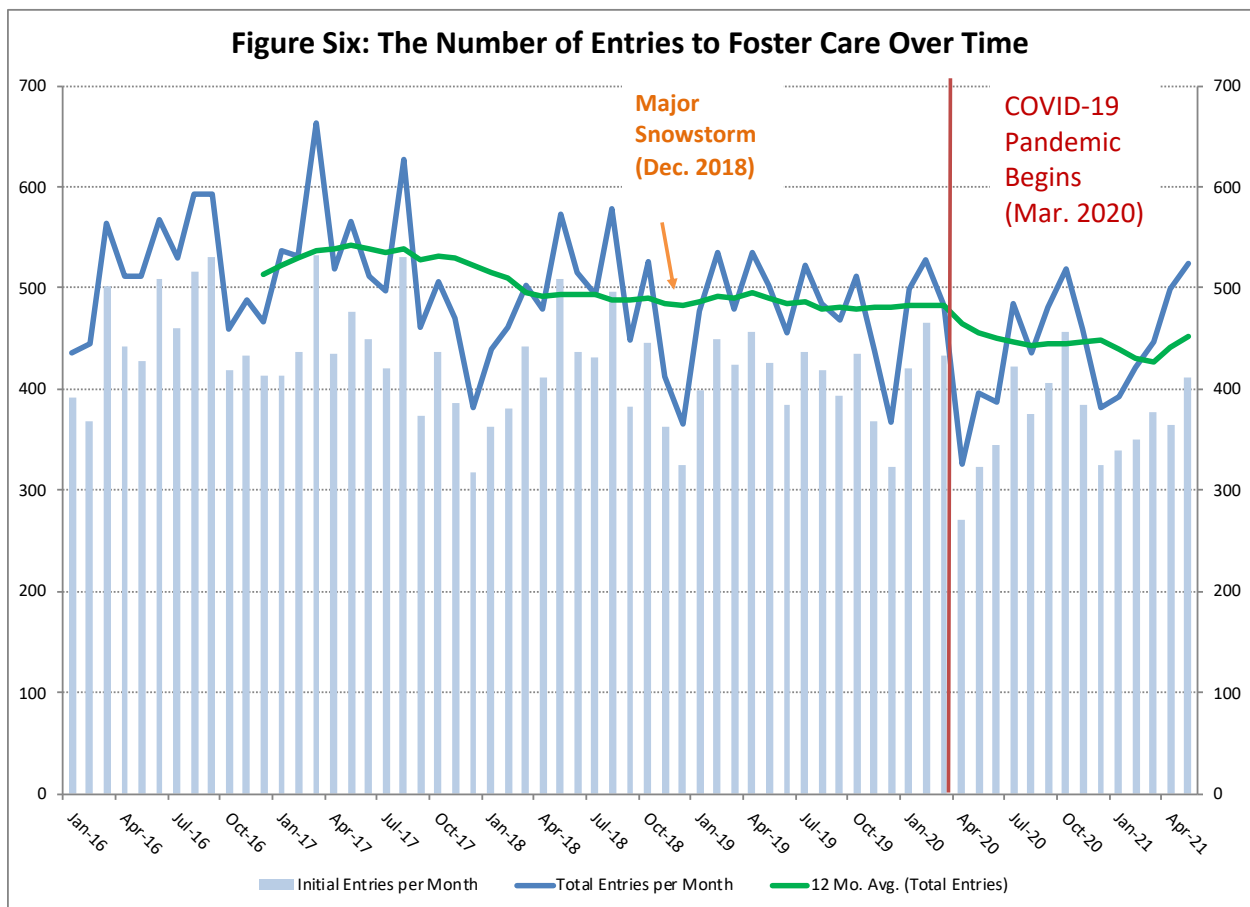
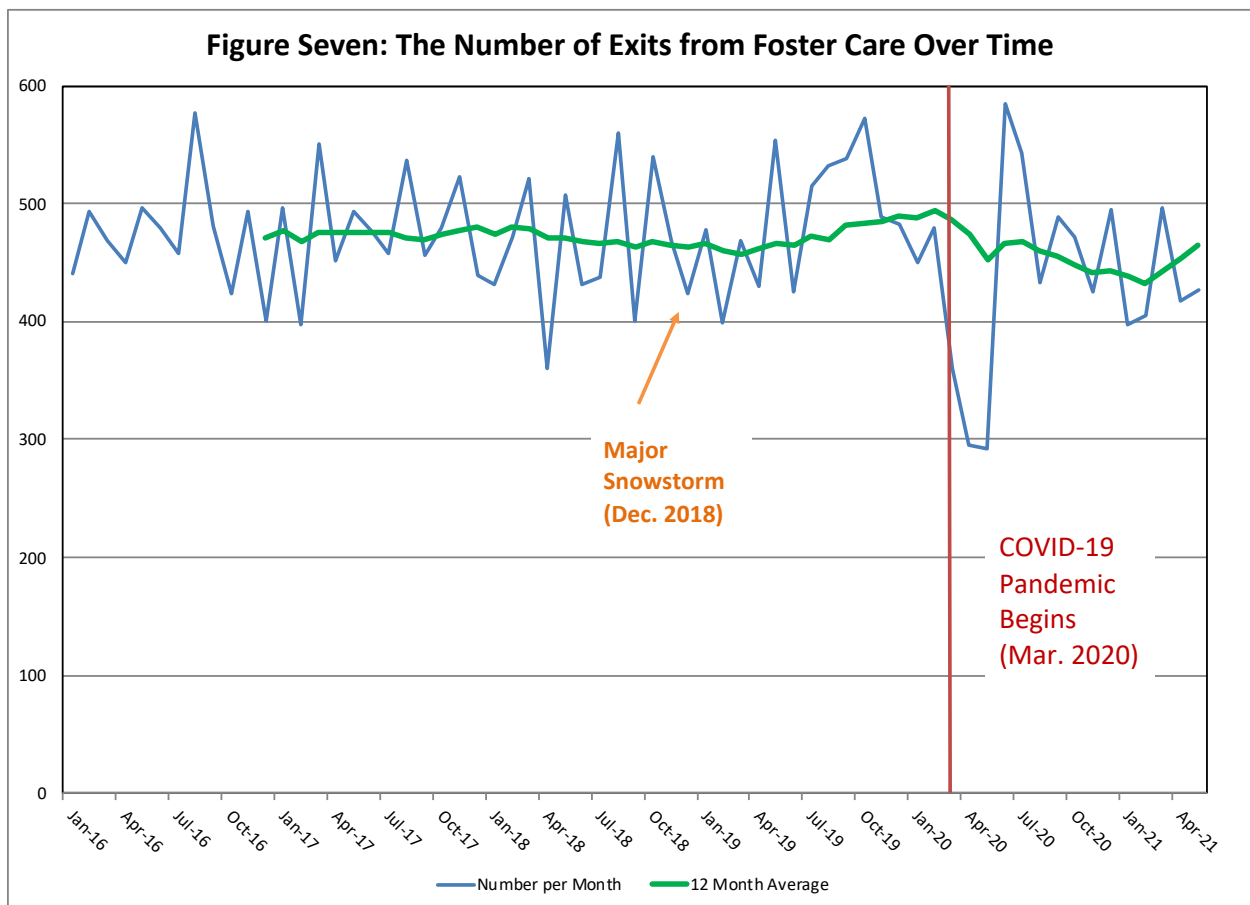


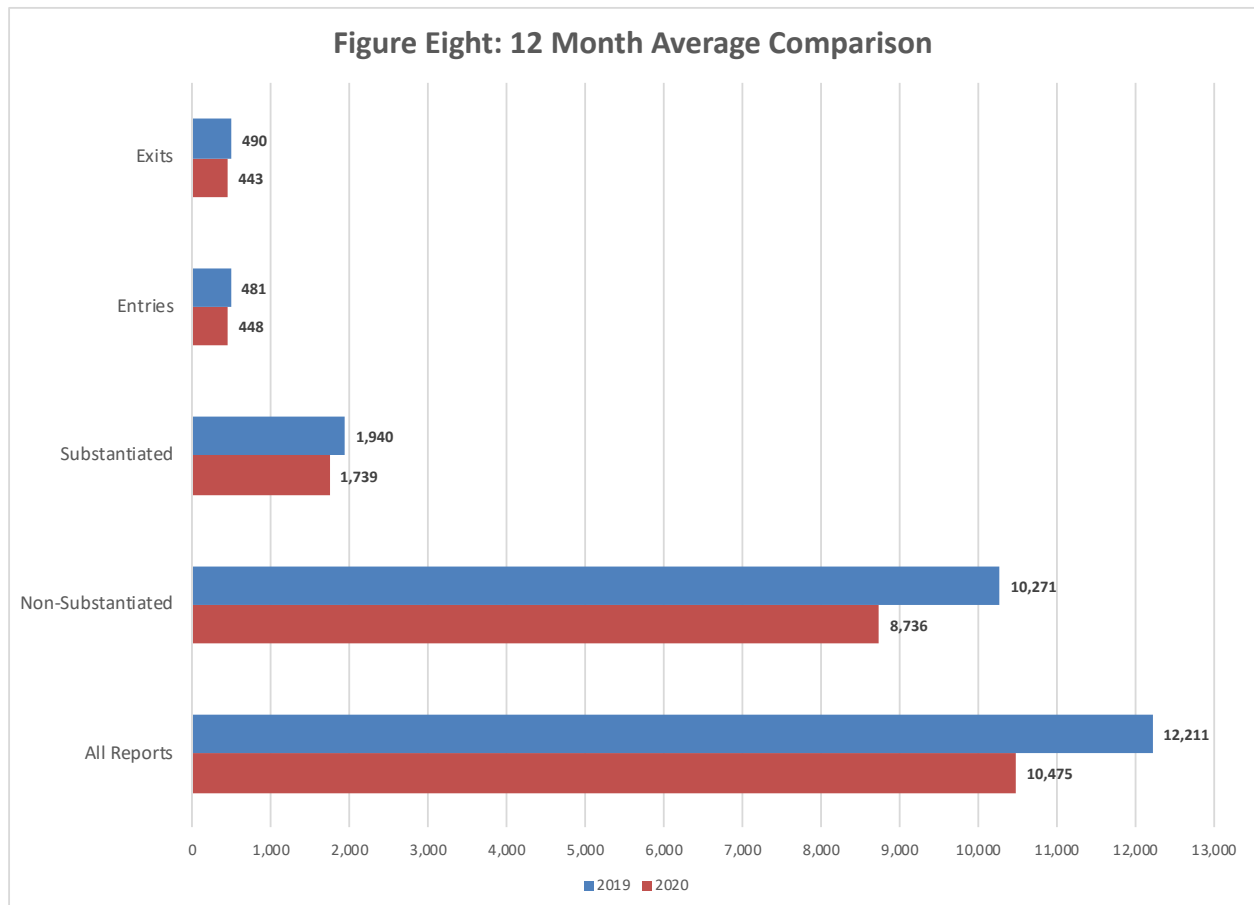
Figure Seven shows the number of children exiting foster care each month as well as the twelve-month average (see Appendix A, Table Six for specific monthly numbers). Most children leave foster care when permanency is achieved, such as reunification with parents, custody or guardianship with a relative/caretaker, or adoption. They may also leave through emancipation or aging out of care at 18 or other less common reasons (for example, death, running away, or court revoking placement authority). As Figure Seven indicates, the number

of children exiting foster care fluctuates considerably from month to month. The annual average for 2016 was about 472 children which increased somewhat to about 479 in 2017. The average then declined to 463 in 2018 before increasing again to 490 in 2019. An effect from the December 2018 snowstorm was not observed in exits per month. There has been considerable concern that the pandemic would not only affect reports of maltreatment and entries into foster care, but also that children would stay in care longer due to delays in efforts to achieve permanency and disruptions in the court system, such as postponed permanency planning hearings. Indeed, Figure Seven shows that exits began declining in March 2020 to 361 and then dropped significantly to 295 in April 2020 and 292 in May 2020, which were lows not seen in the past twenty years. Exits went back up sharply in to 584 in June 2020 and remained high at 543 in July 2020. Like substantiations and entries, exits from care did not decline as steeply as maltreatment reports overall. Nonetheless, the average for 2020 was 443 which is still below the pre-pandemic level. The average for January through May 2021 at 429 is yet lower and may suggest a further downward trend for exits.



Summary

In summary, the pandemic had an unparalleled, widespread, and sustained impact on child welfare by decreasing maltreatment reports, substantiations, non-substantiated findings, entries and exits from foster care, which have yet to recover to pre-pandemic levels and instead are continuing or declining in early 2021. Significant declines in referrals from educational personnel due to school closures and ongoing disruptions explained much of the decrease in maltreatment reports for 2020. While the number of children substantiated also decreased by about 12%, the decline was not as steep as that of non-substantiated findings (18%) and overall reports (17%) as can be seen in **Figure Eight**. This figure compares the twelve-month average for 2019 to 2020 across the different areas of child welfare. Similarly, foster care entries and exits also decreased by 7% and 10.5% respectively, but not as much as non-substantiated findings and overall reports. Thus, it appears that the child welfare system continued to respond to the majority of children most at-risk and worked to achieve permanence for most of the children already in care. In future quarterly reports, we will continue to monitor the pandemic's effect to see if these trends continue as data are updated over time.



This research is funded through a contract with the North Carolina Division of Social Services. The views expressed are those of the authors. Any errors due to the interpretation of the analysis of the data are the authors' alone.

Additional information on the child welfare program at the state or county level is available through the Management Assistance for Child Welfare, Work First, and Food and Nutrition Services web site, <http://ssw.unc.edu/ma/>.

A PDF version of this report can be found at http://sasweb.unc.edu/cgi-bin/broker?_service=default&_program=dgweb.help.sas&county=North%20Carolina&label=&entry=1&help=papers_cw&entry=1&anchor=

This report was designed by Rea Aarnio of the UNC-CH School of Social Work.

References

- Badgett, P., Baines, S., Blaes, J., Hartfield, G., & Keeter, K. (n.d.). Event summary: December 2-3, 2000 winter storm. National Weather Service, Raleigh NC. https://projects.ncsu.edu/atmos_collaboration/nwsfo/storage/cases/20001203/#snowclim
- Gordon, B. (2020, August 10). With more autonomy, N.C. private schools plan more aggressive reopenings. *Asheville Citizen Times*. <https://www.citizen-times.com/story/news/local/2020/07/26/nc-private-schools-reopen-full-classrooms-students-during-covid-19/5477899002/>
- Ovaska, S. (2020, March 27). Child care centers struggle with conflicting advice during COVID-19 outbreak. *North Carolina Health News*. <https://www.northcarolinahealthnews.org/2020/03/27/covid-19-child-care-centers/>
- Rivest, M. (2020). *The status of child care program in North Carolina*. North Carolina Early Education Coalition. <https://www.nearlyeducationcoalition.org/wp-content/uploads/2020/06/Status-of-Child-Care-by-County-6.22.20.pdf>
- Samenow, J. (2018, December 10). Southern storm dumps historic amounts of snow in mid-Atlantic: Here's how much fell. *The Washington Post*. <https://www.washingtonpost.com/weather/2018/12/10/historic-mid-atlantic-december-snowstorm-heres-how-much-fell/>
- Tracking coronavirus in North Carolina: Latest map and case count. (2021, August 15). *The New York Times*. <https://www.nytimes.com/interactive/2021/us/north-carolina-covid-cases.html>

Appendix A

**Table One:
The Number of Children Assessed for Maltreatment**

Month	Number of Children Assessed	Month	Number of Children Assessed
Jan-16	11,156	Sep-18	10,999
Feb-16	12,585	Oct-18	13,300
Mar-16	13,583	Nov-18	11,556
Apr-16	13,581	Dec-18	9,450
May-16	13,943	Jan-19	12,876
Jun-16	11,762	Feb-19	12,085
Jul-16	10,300	Mar-19	13,105
Aug-16	12,235	Apr-19	12,974
Sep-16	13,327	May-19	14,576
Oct-16	12,261	Jun-19	10,210
Nov-16	11,885	Jul-19	10,318
Dec-16	10,701	Aug-19	11,411
Jan-17	12,155	Sep-19	12,698
Feb-17	12,712	Oct-19	13,892
Mar-17	14,288	Nov-19	11,264
Apr-17	12,257	Dec-19	11,127
May-17	15,123	Jan-20	12,836
Jun-17	11,227	Feb-20	12,023
Jul-17	10,320	Mar-20	10,879
Aug-17	12,110	Apr-20	8,047
Sep-17	12,699	May-20	9,104
Oct-17	13,788	Jun-20	9,581
Nov-17	11,935	Jul-20	10,088
Dec-17	10,572	Aug-20	10,417
Jan-18	11,856	Sep-20	11,286
Feb-18	12,897	Oct-20	11,953
Mar-18	13,912	Nov-20	9,956
Apr-18	12,858	Dec-20	9,528
May-18	14,796	Jan-21	9,555
Jun-18	10,656	Feb-21	9,685
Jul-18	10,237	Mar-21	11,202
Aug-18	11,402		

**Table Two:
The Number of Children Assessed by Referral Source**

Month	Educa- tional	Law/ Court	Human Services	Medical	Relative	Anony- mous	Non- Relative	Parental	Care Provider	Victim
Jan-16	2263	2229	1439	1437	1172	1163	1042	583	87	52
Feb-16	3352	2291	1603	1393	1204	1154	1035	713	103	32
Mar-16	3275	2651	1778	1529	1338	1377	1197	684	63	60
Apr-16	3290	2480	1760	1452	1146	1524	1397	758	74	41
May-16	3438	2755	1656	1473	1245	1516	1286	780	78	53
Jun-16	835	2738	1692	1578	1391	1419	1425	816	83	59
Jul-16	179	2417	1479	1448	1298	1451	1386	748	76	36
Aug-16	461	2781	1662	1571	1773	1428	1736	916	108	69
Sep-16	2725	2593	1600	1664	1387	1366	1405	781	91	75
Oct-16	2863	2459	1455	1320	1294	1164	1279	632	77	43
Nov-16	2836	2222	1509	1349	1038	1117	1195	714	102	39
Dec-16	2346	2205	1308	1312	1080	1049	925	631	47	33
Jan-17	2743	2255	1531	1583	1312	1090	1089	726	87	36
Feb-17	3479	2287	1488	1462	1208	1140	1142	670	78	45
Mar-17	4072	2712	1574	1572	1271	1249	1297	693	101	67
Apr-17	2528	2708	1389	1389	1268	1161	1285	668	82	49
May-17	4000	2838	1704	1763	1428	1399	1407	791	123	37
Jun-17	935	2530	1474	1690	1358	1233	1365	673	95	56
Jul-17	208	2406	1428	1639	1311	1156	1353	887	76	56
Aug-17	597	2626	1740	1825	1607	1384	1563	968	70	57
Sep-17	2776	2384	1418	1693	1253	1177	1355	769	85	36
Oct-17	3370	2419	1616	1824	1351	1360	1233	771	103	56
Nov-17	3115	2053	1302	1644	1097	1020	1117	666	102	19
Dec-17	2292	2151	1307	1550	943	911	843	699	64	14
Jan-18	2544	2270	1521	1689	1140	1092	1030	698	72	47
Feb-18	3786	2181	1469	1632	1037	1109	1106	695	127	40
Mar-18	4234	2321	1538	1805	1275	1151	992	724	80	50
Apr-18	3026	2211	1568	1674	1300	1184	1259	850	90	59
May-18	4002	2665	1641	1906	1377	1232	1363	804	95	43
Jun-18	738	2405	1457	1747	1240	1153	1283	672	105	36
Jul-18	214	2422	1507	1747	1287	1050	1294	776	104	49
Aug-18	740	2445	1574	1865	1501	1218	1342	849	87	67
Sep-18	2319	2264	1441	1550	1014	896	1063	637	45	35
Oct-18	3267	2307	1628	1763	1350	1143	1279	713	80	52
Nov-18	3103	1973	1352	1634	1027	848	999	711	69	26
Dec-18	1927	1865	1157	1465	987	690	974	492	77	41

Month	Educa- tional	Law/ Court	Human Services	Medical	Relative	Anony- mous	Non- Relative	Parental	Care Provider	Victim
Jan-19	3357	2278	1688	1715	1123	952	1041	738	136	27
Feb-19	3590	1902	1303	1738	979	930	1037	620	112	25
Mar-19	3817	2237	1462	1974	918	880	1207	669	90	49
Apr-19	3164	2241	1583	1829	1147	967	1282	735	98	52
May-19	3604	2548	1741	2038	1291	1210	1392	761	107	67
Jun-19	711	2262	1433	1763	1125	1024	1116	765	95	40
Jul-19	177	2449	1553	1843	1228	1005	1306	774	72	47
Aug-19	879	2409	1613	1948	1344	1044	1237	954	99	54
Sep-19	3079	2259	1322	1793	1242	1015	1264	822	67	33
Oct-19	3921	2493	1538	1876	1093	1015	1246	817	113	40
Nov-19	3038	1868	1371	1655	925	805	988	639	69	27
Dec-19	2693	2119	1234	1734	1023	731	1010	635	59	21
Jan-20	3316	2350	1555	1926	1154	842	1055	736	112	31
Feb-20	3606	1991	1459	1692	915	793	1016	575	83	39
Mar-20	2352	2301	1451	1633	869	804	919	614	62	38
Apr-20	313	2213	1090	1580	805	645	928	520	37	23
May-20	297	2451	1139	1788	999	713	1020	635	78	22
Jun-20	128	2329	1240	1807	1203	852	1206	768	63	48
Jul-20	104	2443	1506	1731	1314	951	1303	726	55	42
Aug-20	533	2389	1330	1923	1305	1038	1151	755	37	37
Sep-20	1468	2401	1407	1909	1138	1008	1243	771	63	53
Oct-20	1974	2275	1611	1798	1255	927	1299	831	96	61
Nov-20	1683	2092	1290	1645	945	687	988	685	57	42
Dec-20	1350	2074	1329	1657	925	685	825	680	69	46
Jan-21	1624	1979	1206	1656	919	724	816	636	70	46
Feb-21	2125	1788	1113	1772	849	663	736	593	89	30
Mar-21	2912	2111	1327	1811	936	689	880	608	65	50

**Table Three:
The Number of Children Substantiated (including Services Needed)**

Month	Number of Children with a Substantiated Report	Month	Number of Children with a Substantiated Report
Jan-16	1,808	Sep-18	1,681
Feb-16	2,032	Oct-18	1,975
Mar-16	2,260	Nov-18	1,679
Apr-16	2,185	Dec-18	1,418
May-16	2,180	Jan-19	1,969
Jun-16	1,971	Feb-19	1,913
Jul-16	1,769	Mar-19	2,048
Aug-16	2,019	Apr-19	2,111
Sep-16	2,034	May-19	2,183
Oct-16	1,872	Jun-19	1,692
Nov-16	1,777	Jul-19	1,875
Dec-16	1,672	Aug-19	1,989
Jan-17	1,958	Sep-19	1,995
Feb-17	2,138	Oct-19	2,098
Mar-17	2,339	Nov-19	1,608
Apr-17	2,011	Dec-19	1,802
May-17	2,169	Jan-20	2,135
Jun-17	2,071	Feb-20	1,813
Jul-17	1,925	Mar-20	1,597
Aug-17	2,121	Apr-20	1,550
Sep-17	2,026	May-20	1,665
Oct-17	2,096	Jun-20	1,721
Nov-17	1,804	Jul-20	1,786
Dec-17	1,509	Aug-20	1,759
Jan-18	1,969	Sep-20	1,725
Feb-18	1,952	Oct-20	1,726
Mar-18	1,919	Nov-20	1,560
Apr-18	2,057	Dec-20	1,521
May-18	2,114	Jan-21	1,508
Jun-18	1,798	Feb-21	1,478
Jul-18	1,762	Mar-21	1,530
Aug-18	1,889		

Table Four: The Number of Children by Assessment Finding Type²

Month	Depen- dency	Abuse	Abuse and Neglect	Neglect	Services Needed	Services Provided, No Longer Needed	Services Recom- mended	Services Not Recom- mended	Un- substanti- ated
Jan-16	32	73	95	496	1112	611	3267	3825	1645
Feb-16	29	63	98	597	1245	683	3491	4545	1834
Mar-16	32	87	137	604	1400	638	3794	4886	2005
Apr-16	21	86	114	607	1357	722	3696	5031	1947
May-16	30	63	102	572	1413	724	4041	4953	2045
Jun-16	37	66	96	527	1245	646	3333	4280	1532
Jul-16	20	68	78	564	1039	592	2578	3986	1375
Aug-16	17	85	104	611	1202	664	3128	4625	1799
Sep-16	25	50	126	628	1205	751	3518	4891	2133
Oct-16	17	54	73	495	1233	718	3320	4445	1906
Nov-16	26	81	93	486	1091	620	3131	4640	1717
Dec-16	14	52	60	468	1078	631	2854	4002	1542
Jan-17	35	76	112	588	1147	669	3260	4475	1793
Feb-17	19	66	94	633	1326	726	3353	4638	1857
Mar-17	33	81	126	671	1428	715	3963	5208	2063
Apr-17	29	77	78	507	1320	620	3375	4433	1818
May-17	26	73	110	560	1400	759	4228	5670	2297
Jun-17	24	77	118	559	1293	543	2980	4139	1494
Jul-17	24	62	103	442	1294	504	2701	3771	1419
Aug-17	26	75	96	540	1384	646	3358	4364	1621
Sep-17	16	76	97	512	1325	659	3388	4748	1878
Oct-17	18	71	103	531	1373	745	3693	5167	2087
Nov-17	14	93	111	491	1095	549	3377	4310	1895
Dec-17	21	40	74	373	1001	482	3017	3938	1626
Jan-18	21	93	127	463	1265	661	3284	4169	1773
Feb-18	14	79	103	557	1199	675	3605	4543	2122
Mar-18	20	74	86	491	1248	647	3867	5226	2253
Apr-18	14	89	100	622	1232	608	3295	4818	2080
May-18	18	86	132	534	1344	735	4144	5592	2211
Jun-18	15	36	88	485	1174	551	2816	3991	1500
Jul-18	17	67	93	441	1144	571	2547	3835	1522
Aug-18	17	96	96	487	1193	598	3058	4134	1723
Sep-18	8	71	95	400	1107	575	3004	3965	1774

² The count of children is not unique as some may have multiple reports assessed at the same time.

Month	Dependency	Abuse	Abuse and Neglect	Neglect	Services Needed	Services Provided, No Longer Needed	Services Recommended	Services Not Recommended	Un-substantiated
Oct-18	23	62	108	523	1259	575	3519	5045	2186
Nov-18	10	59	100	484	1026	602	3140	4420	1715
Dec-18	9	55	76	403	875	463	2726	3496	1347
Jan-19	20	60	113	510	1266	608	3397	4966	1936
Feb-19	21	58	155	474	1205	543	3155	4662	1812
Mar-19	21	57	130	559	1281	507	3607	5078	1865
Apr-19	26	73	110	526	1376	537	3361	5091	1874
May-19	12	82	106	547	1436	625	3711	5901	2156
Jun-19	20	67	107	391	1107	389	2686	4136	1307
Jul-19	14	65	87	511	1198	373	2685	3969	1416
Aug-19	11	83	108	432	1355	410	2928	4598	1486
Sep-19	23	63	112	588	1209	437	3415	4838	2013
Oct-19	15	55	128	538	1362	419	3631	5563	2181
Nov-19	20	55	77	355	1101	297	3138	4546	1675
Dec-19	11	63	88	490	1150	356	3142	4367	1460
Jan-20	17	73	109	495	1441	364	3766	4988	1583
Feb-20	19	58	83	438	1215	302	3497	4774	1637
Mar-20	16	53	94	405	1029	320	3177	4455	1330
Apr-20	11	53	69	399	1018	243	2411	2918	925
May-20	18	63	68	433	1083	268	2684	3267	1220
Jun-20	6	63	93	446	1113	327	2803	3574	1156
Jul-20	11	68	151	474	1082	366	2804	3797	1335
Aug-20	18	48	90	428	1233	292	3080	3935	1293
Sep-20	11	49	123	431	1211	360	3222	4314	1565
Oct-20	20	57	108	472	1223	423	3493	4595	1562
Nov-20	18	56	84	349	1053	287	2875	3962	1272
Dec-20	22	67	81	363	988	244	3137	3390	1236
Jan-21	7	57	72	404	968	285	3156	3386	1220
Feb-21	16	65	100	365	932	260	3037	3534	1376
Mar-21	10	45	81	324	1070	297	3566	4310	1499

**Table Five:
The Number of Children Entering Foster Care**

Month	Initial Entries	Total Entries	Month	Initial Entries	Total Entries
Jan-16	391	435	Oct-18	446	526
Feb-16	369	445	Nov-18	363	412
Mar-16	502	564	Dec-18	325	365
Apr-16	443	511	Jan-19	399	478
May-16	428	511	Feb-19	449	535
Jun-16	509	567	Mar-19	424	480
Jul-16	461	530	Apr-19	457	535
Aug-16	517	593	May-19	426	502
Sep-16	531	592	Jun-19	385	455
Oct-16	418	459	Jul-19	436	523
Nov-16	433	488	Aug-19	419	485
Dec-16	413	467	Sep-19	393	468
Jan-17	414	536	Oct-19	435	512
Feb-17	437	532	Nov-19	369	437
Mar-17	533	664	Dec-19	324	367
Apr-17	435	519	Jan-20	420	499
May-17	476	566	Feb-20	465	527
Jun-17	449	512	Mar-20	434	482
Jul-17	421	498	Apr-20	271	325
Aug-17	531	627	May-20	324	396
Sep-17	374	462	Jun-20	344	387
Oct-17	437	507	Jul-20	423	485
Nov-17	387	470	Aug-20	375	435
Dec-17	318	381	Sep-20	407	481
Jan-18	362	440	Oct-20	456	519
Feb-18	380	462	Nov-20	384	460
Mar-18	443	503	Dec-20	325	382
Apr-18	412	480	Jan-21	339	393
May-18	509	573	Feb-21	350	421
Jun-18	437	516	Mar-21	377	447
Jul-18	432	494	Apr-21	365	499
Aug-18	497	578	May-21	412	524
Sep-18	382	449			

**Table Six:
The Number of Children Exiting Foster Care**

Month	Number of Children Existing Foster Care	Month	Number of Children Existing Foster Care
Jan-16	440	Oct-18	540
Feb-16	493	Nov-18	469
Mar-16	468	Dec-18	424
Apr-16	450	Jan-19	478
May-16	496	Feb-19	399
Jun-16	480	Mar-19	469
Jul-16	458	Apr-19	430
Aug-16	577	May-19	554
Sep-16	481	Jun-19	425
Oct-16	423	Jul-19	515
Nov-16	493	Aug-19	532
Dec-16	401	Sep-19	538
Jan-17	497	Oct-19	573
Feb-17	397	Nov-19	488
Mar-17	551	Dec-19	482
Apr-17	451	Jan-20	450
May-17	494	Feb-20	480
Jun-17	477	Mar-20	361
Jul-17	457	Apr-20	295
Aug-17	537	May-20	292
Sep-17	456	Jun-20	584
Oct-17	479	Jul-20	543
Nov-17	522	Aug-20	433
Dec-17	439	Sep-20	489
Jan-18	432	Oct-20	471
Feb-18	472	Nov-20	425
Mar-18	521	Dec-20	495
Apr-18	361	Jan-21	397
May-18	507	Feb-21	405
Jun-18	431	Mar-21	496
Jul-18	437	Apr-21	418
Aug-18	560	May-21	427
Sep-18	401		