



Changes and Trends in the Child Welfare Caseload in North Carolina

December 2010

C. Joy Stewart
D. F. Duncan, III

Jordan Institute for Families
UNC-CH School of Social Work
Chapel Hill, NC
December 2010



UNC
SCHOOL OF SOCIAL WORK

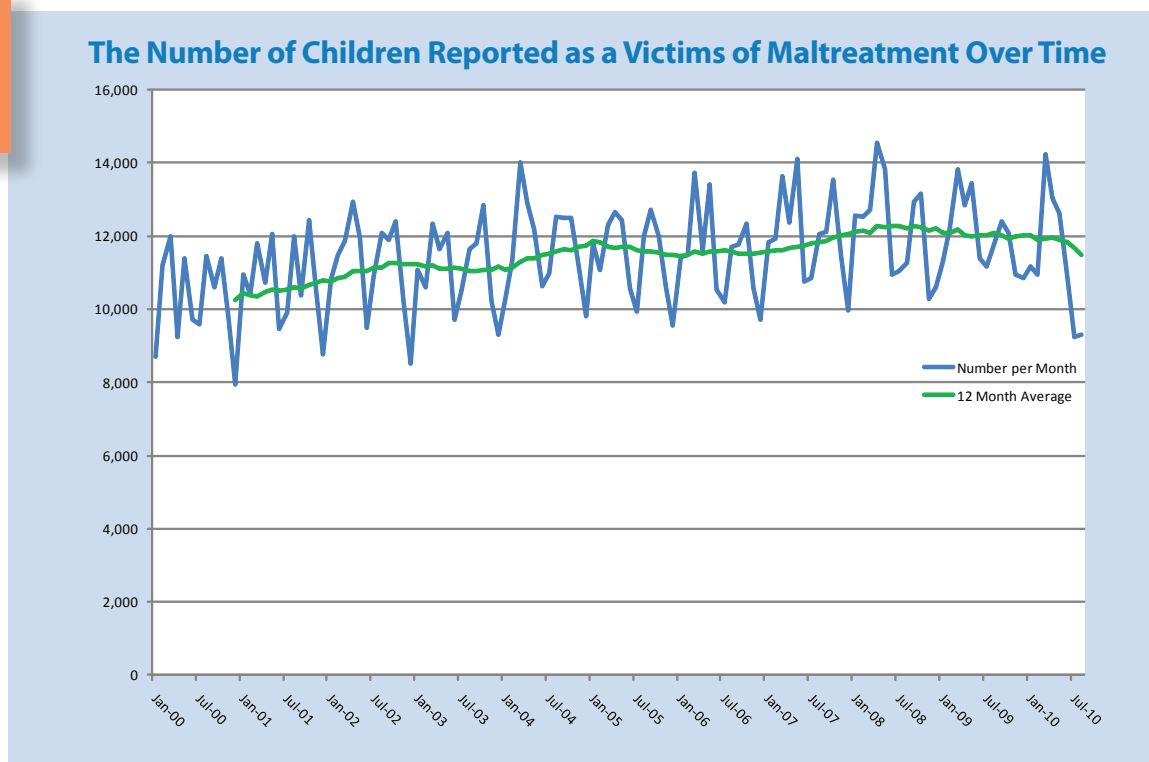
Changes and Trends in the Child Welfare Caseload in North Carolina: December 2010



This report explores changes and trends in the child welfare caseload in North Carolina. This analysis is based on data extracted from the Services Information System (SIS) in early December 2010. These extracts are used to construct and maintain a longitudinal file that tracks the experiences of children and youth who have been involved with the child welfare system in North Carolina. The analysis explores changes in the number of children reported as victims of maltreatment, the number of those reports which are substantiated, and the number of children entering foster care. Long-term trends are also discussed.

Figure One illustrates the changes in the number of reports of maltreatment¹ over time (specific monthly numbers can be found in Appendix A, Table One). As the figure indicates, the number of reports of maltreatment received monthly has increased slightly over time and is illustrated by the twelve month average trend line. The number of children reported rose slightly from 11,983 in

Figure 1



¹ The reports of maltreatment tracked in Figures One through Five of this report do not provide a unique count of children per year. There are a number of instances in which a child may have more than one report investigated within a calendar year. Also, there are some instances where two separate investigations—as indicated by date of case decision on the DSS-5104 form—about an individual child are concluded within a calendar month. Instances where there are separate allegations of maltreatment for an individual child—as indicated by the form identification number—with the same case decision date are collapsed into a single report. Also, state policies require that when a report of maltreatment is received, all children living in the home must be assessed as a possible victim of maltreatment. As a result, the number of children reported as victims of maltreatment could fluctuate based upon the size of families involved, even as the number of reports remains steady.

August 2001 to 12,527 in August 2004. By August 2006 the number of reports declined to 11,696 and then to 11,254 in August 2008. By August 2009, the number of reports increased to 11,748. By December 2009, the number of reports had fallen to 10,860. The number of reports received each month rose in March 2010 to 14,218, but then dropped to 13,016 in April 2010 and fell even further in August 2010 to 9,291. However, the number of reports for more recent months is likely to increase as data are updated over time.

Figure One also indicates that there is variation from month to month in the number of children reported. That variation is further illustrated in **Figure Two** which shows the pattern of the number of reports received each month by year from January 2006 through August 2010. As the figure indicates, the number of reports received generally peaks around May, then falls in June and July before beginning a slight rise through October. The number of reports then declines through December. One purpose of this figure is to gauge whether there has been a rise in the number of reports received corresponding to the downturn in the state's economy. The figure does not suggest that there has been a consistent and sustained increase in the number of reports, although the number of reports received in April 2008 was higher than that for previous years. The number of reports received in May 2008 was slightly lower than that for May 2007. In 2009, the number of reports received each month generally was similar to that of the two prior years. The figure also suggests that there is a decline in the number of reports between June 2009 and November 2009. Even though the number of reports was lower in November 2009, the number of reports received monthly in August 2009 through October 2009 was higher than the number of reports received in June 2009. The pattern for 2010 appears to follow that of prior years, although the number of reports was somewhat lower, especially for July and August 2010. Again this decline will likely attenuate as the data are updated over time.

Figure 2

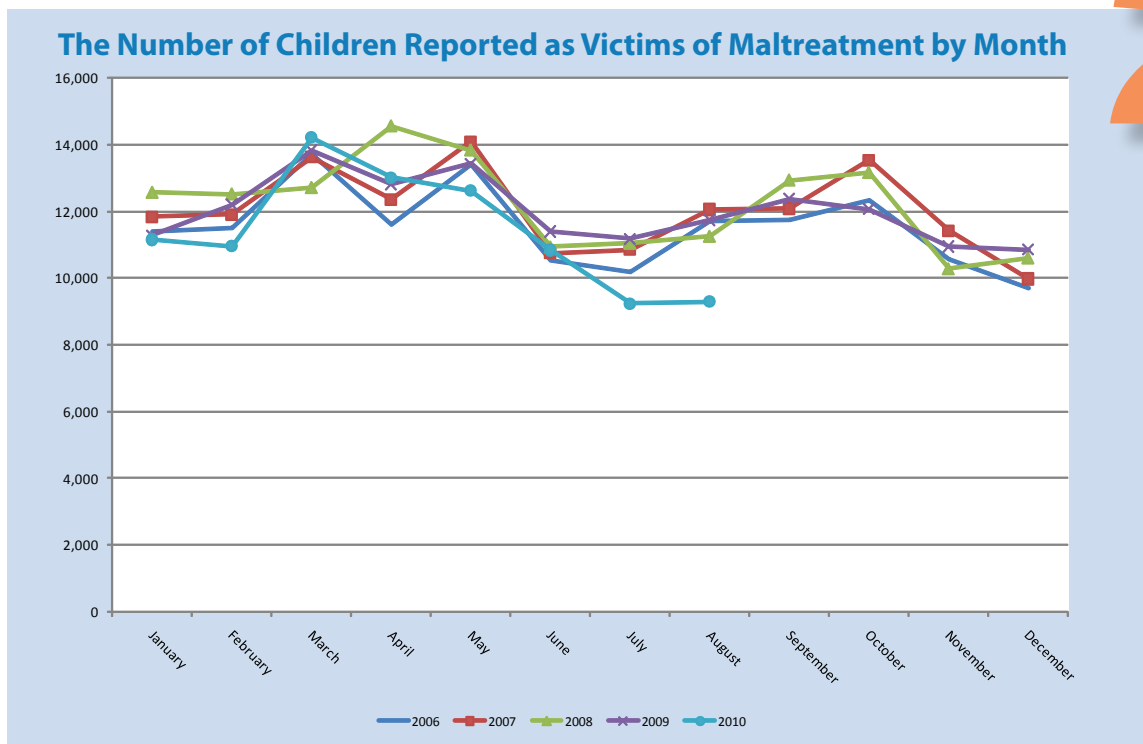
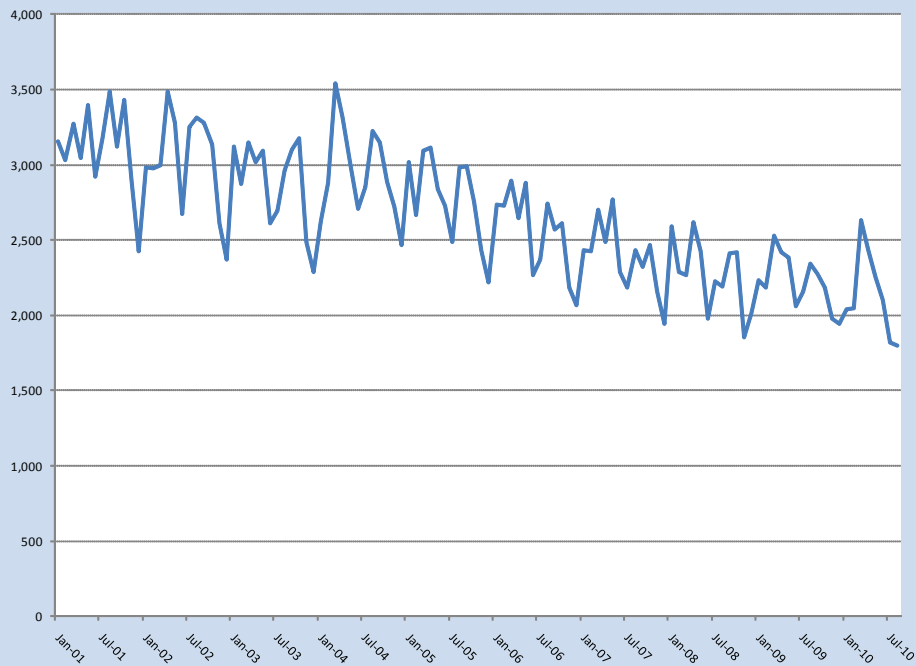


Figure Three illustrates the number of children whose reports of maltreatment were substantiated. Specific monthly numbers can be found in **Appendix A, Table Two**. A report is considered substantiated if it has a finding of abuse, neglect, abuse and neglect, dependency, or services needed. It does not include instances where the finding was services provided, child protective services no longer needed. Again, these reports are not based on a unique count of children per year. As the figure indicates, the number of children whose report is substantiated has declined over time, from around 3,100 per month in 2001 to around 2,200 per month in 2009-2010. The decline generally corresponds to the implementation of the Multiple Response System (MRS) between 2001 and 2006², which resulted in an increase in the number of instances where services were provided to the child or the child’s family but were no longer needed when the investigation was completed. Under MRS, investigations of reports of maltreatment can follow one of two tracks: investigative or family assessment. The investigative track is similar in most respects to the way maltreatment reports were handled prior to the implementation of MRS. The family assessment track, on the other hand, allows and encourages the provision of services to families that would build on their strengths and eliminate the risk of harm to their children. The apparent decline also could be associated with an increase in the number of instances where the finding is services provided, child protective services no longer needed.

Figure 3

The Number of Children with Substantiated Reports of Maltreatment Over Time



Counties have some flexibility in whether to use the investigative or the family assessment track. According to policy³, the choice of response should be based on the approach that best provides for the child’s safety, permanence, and well being. State policies require that all reports of abuse

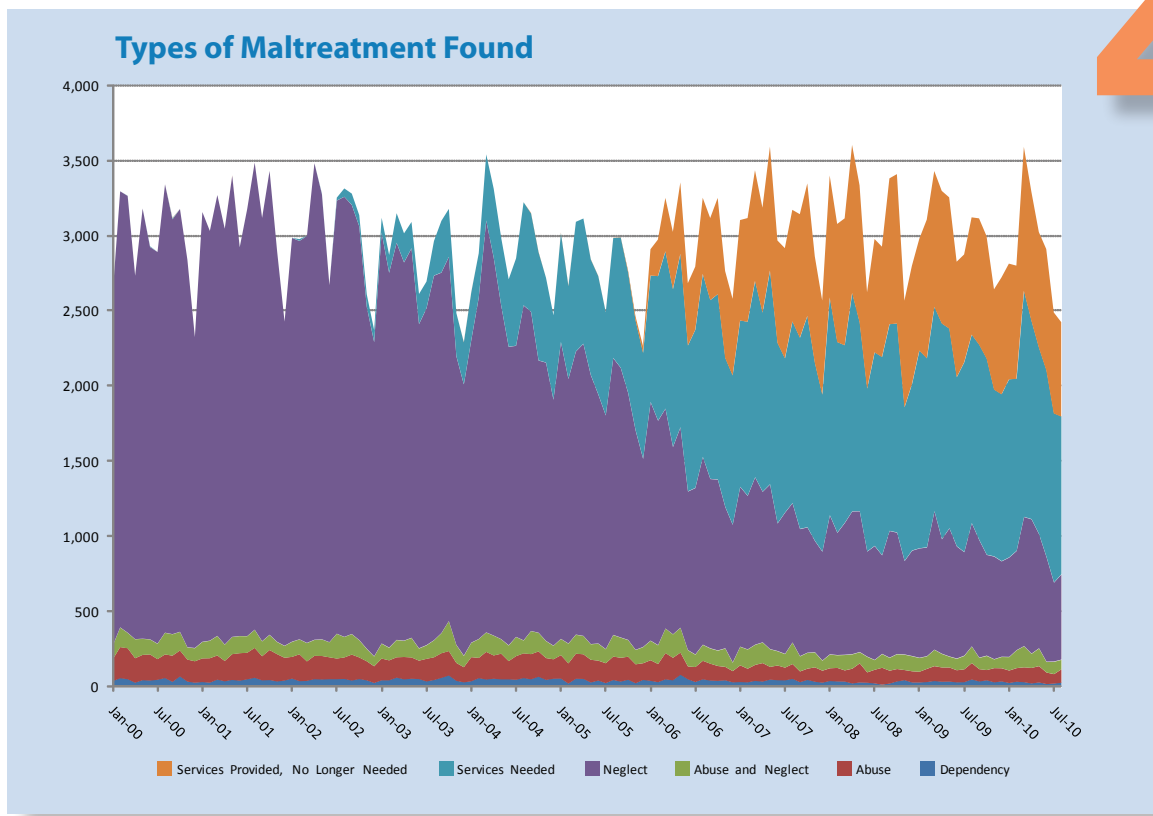
² MRS was implemented as a pilot program in ten counties in 2001. In 2003, 42 additional counties began applying MRS policies. MRS was expanded statewide in January 2006.

³ The policies for investigations are found in Volume 1: Children’s Services, Chapter VIII: Child Protective Services, of the NC-DSS Family Services Manual available at <http://info.dhhs.state.nc.us/olm/manuals/dss/csm-60/man/>.

follow the investigative track. In addition, the policies require that certain reports of neglect—such as those involving a child fatality or where there is medical neglect of a disabled infant—follow the investigative track as well. For other neglect or dependency reports, county departments of social services may use the family assessment response. The family assessments incorporate System of Care (SOC) principles such as involving the family in decisions, developing an individualized plan which builds on the family’s strengths, fostering interagency collaboration to address the family’s needs, and developing culturally appropriate responses.

Just as the tracks differ in their approach, the findings differ as well. Under the investigative track, findings for abuse, neglect, or dependency are classified as either substantiated or unsubstantiated. For reports handled through the family assessment track, the findings can be services needed; services recommended; services provided, protective services no longer needed; and services not recommended. The finding of services needed is made when there are questions about the frequency and severity of maltreatment, current safety issues, if there is a risk of harm in the future, or if the child is in need of protective services. The finding of services provided, protective services no longer needed is used if, during the assessment, a determination was made that the threat to the child’s safety or the risk of future harm were great enough to require the provision of involuntary services, but the problems were addressed and services were no longer required at the end of the assessment period.

The changes in the type of maltreatment found over time are shown in **Figure Four**. In addition to the types presented in Figure Three (e.g., abuse, neglect, abuse and neglect, dependency, and services needed), this figure contains the count of children whose maltreatment investigation found that services were provided to the child or family during

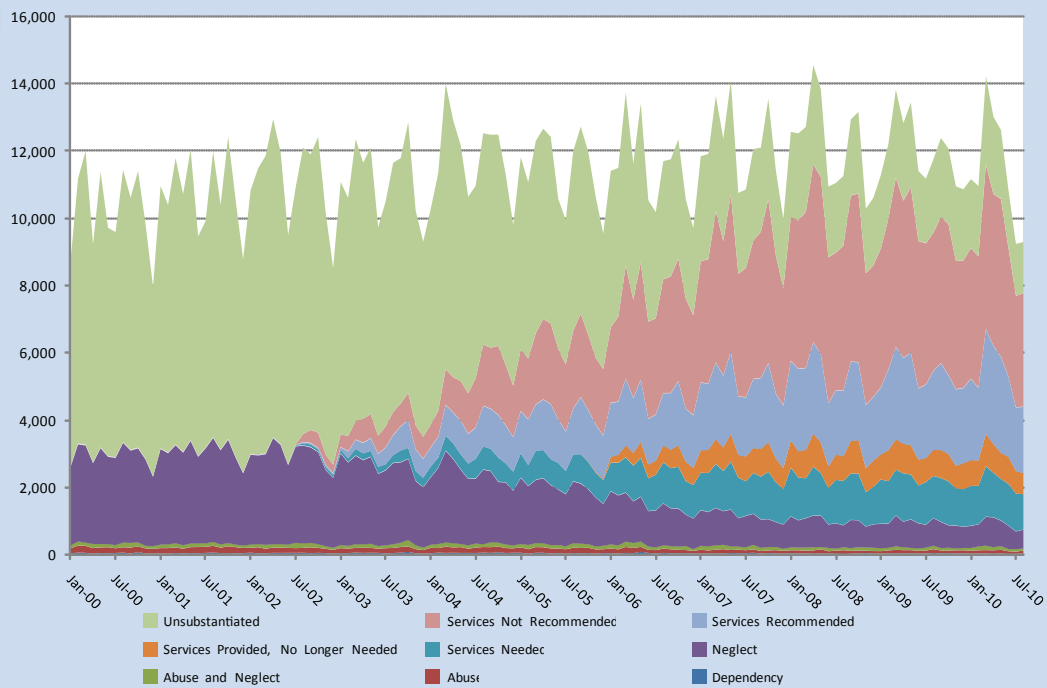


the protective services investigation but that child protective services were no longer needed. These reports do not provide a unique count of children per year. Specific monthly numbers can be found in **Appendix A, Table Three**. As the figure indicates, there has been a decline in the number of children found to be victims of neglect. This decline corresponds with an increase in the number of children where the investigation into the maltreatment concluded that services were needed. In mid-2006, there also was an increase in the number of maltreatment investigations that concluded that as the result of the services provided during the protective services investigation, no additional services were needed. In addition to the decrease in the number of instances where children and youth were found to be victims of neglect, there is a slight decrease over time in the number of children who were found to be victims of abuse.

Figure Five illustrates findings from the investigation of maltreatment reports have changed over time. As the figure indicates, while there has been a decrease in the findings of abuse, neglect, abuse and neglect, and dependency, there has also been a decrease in the number of unsubstantiations. This decline in unsubstantiations is likely due to a decrease in the number of investigations routed through the investigative track. That notion is further supported by the increase in the number of findings of services not recommended, an outcome of the family assessment track. Figure Five also shows an increasing number of findings of services recommended. The increase reflects the growth of MRS. Even after the expansion of MRS statewide in 2006, the number of findings of services recommended has continued to grow. As Figure Four suggested earlier, the monthly sum of findings of abuse; neglect; abuse and neglect; dependency; services needed; and services provided, protective services no longer needed, has

Figure 5

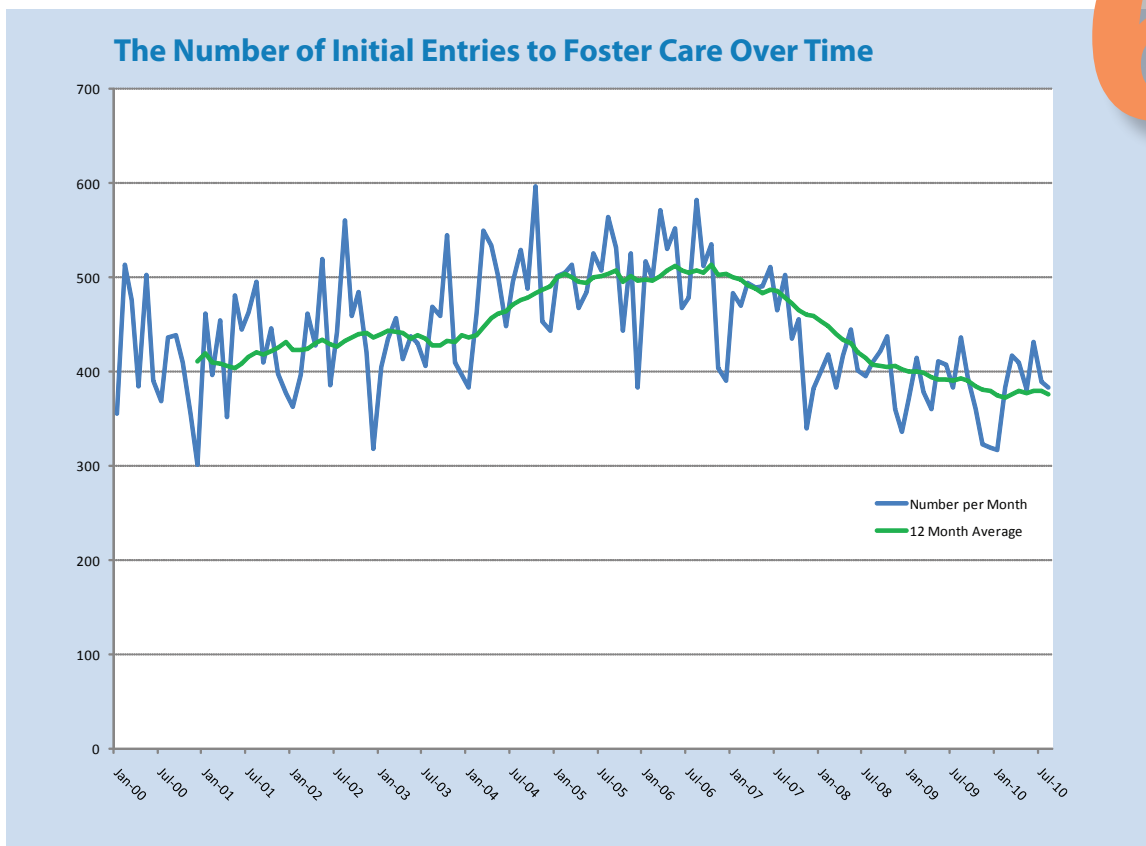
The Findings from Investigations of Children Reported as Victims of Maltreatment



remained fairly steady over time. With the expansion of MRS, there appears to have been an increase in the number of families and children recommended for services above the number of children determined to be victims of maltreatment.

Figure Six reports the number of children entering foster care for the first time. According to the figure, the number of children entering foster care generally ranged between 400 and 500 per month between 2000 and 2004. There appears to have been an increase between 2005 and 2007, when the number of children entering care centered around 500 per month. In mid 2007, the number entering each month began to fall and has ranged between a high of 511 children in June 2007 to a low of 317 in January 2010. The twelve month average trend demonstrates these variations. The figure indicates there is month-to-month as well as seasonal variation. The number of children entering foster care for the first time tends to reach a low point in December. In December 2000, only 301 children entered foster care for the first time. In December 2002, 318 children entered care for the first time. In December 2005, 384 children entered care for the first time. In December 2009, 319 entered care for the first time. Also, according to the chart, October seems to be associated with a large number of children entering care for the first time. In October 2004, 597 entered foster care. That compares with 545 entering care for the first time in October 2003 and 535 entering care for the first time in October 2006.

6 Figure



Summary



Since 2000, there has been a gradual increase in the monthly number of children with reports of maltreatment. In comparing patterns across months for the last several years, there does not appear to have been a sharp increase associated with the current economic downturn. There has been a gradual decrease in the number of reports that are classified as substantiations. That decrease is not as apparent when MRS assessments with a finding of services provided, services no longer needed are included. Also, following the implementation of MRS, there has been a gradual decrease in the combined number of assessments with a finding of unsubstantiated or services not recommended. There has been an increase in the number of cases with an MRS finding of services recommended. Initial entries into foster care increased until 2006-2007 and declined thereafter.

This research is funded through a contract with the North Carolina Division of Social Services. The views expressed are those of the authors. Any errors due to the interpretation of the analysis of the data are the authors' alone.

Additional information on the child welfare program at the state or county level is available through the Management Assistance for Child Welfare, Work First, and Food and Nutrition Services web site, <http://ssw.unc.edu/ma/>.

A PDF version of this report can be found at http://sasweb.unc.edu/cgi-bin/broker?_service=default&_program=wrkfirst.help.sas&county=North%20Carolina&label=&help=papers&entry=2&anchor=

This report was designed by Rea Gibson of the UNC-CH School of Social Work.

Appendix A

Table 1

The Number of Children Reported As Maltreated

Month	Number of Children Reported
Jan-01	10,956
Feb-01	10,393
Mar-01	11,785
Apr-01	10,712
May-01	12,039
Jun-01	9,464
Jul-01	9,912
Aug-01	11,983
Sep-01	10,390
Oct-01	12,416
Nov-01	10,548
Dec-01	8,775
Jan-02	10,830
Feb-02	11,483
Mar-02	11,850
Apr-02	12,941
May-02	11,964
Jun-02	9,500
Jul-02	10,917
Aug-02	12,094
Sep-02	11,900
Oct-02	12,412
Nov-02	10,164
Dec-02	8,517
Jan-03	11,080
Feb-03	10,600
Mar-03	12,350
Apr-03	11,649
May-03	12,092

Jun-03	9,728
Jul-03	10,504
Aug-03	11,647
Sep-03	11,786
Oct-03	12,851
Nov-03	10,221
Dec-03	9,302
Jan-04	10,269
Feb-04	11,335
Mar-04	14,004
Apr-04	12,905
May-04	12,170
Jun-04	10,637
Jul-04	10,963
Aug-04	12,527
Sep-04	12,482
Oct-04	12,484
Nov-04	11,295
Dec-04	9,794
Jan-05	11,810
Feb-05	11,066
Mar-05	12,297
Apr-05	12,660
May-05	12,417
Jun-05	10,578
Jul-05	9,947
Aug-05	11,997
Sep-05	12,721
Oct-05	11,978
Nov-05	10,628
Dec-05	9,539
Jan-06	11,407
Feb-06	11,495
Mar-06	13,737

Month	Number of Children Reported
Apr-06	11,620
May-06	13,411
Jun-06	10,534
Jul-06	10,178
Aug-06	11,696
Sep-06	11,751
Oct-06	12,344
Nov-06	10,563
Dec-06	9,703
Jan-07	11,841
Feb-07	11,911
Mar-07	13,635
Apr-07	12,359
May-07	14,089
Jun-07	10,751
Jul-07	10,853
Aug-07	12,058
Sep-07	12,098
Oct-07	13,543
Nov-07	11,422
Dec-07	9,979
Jan-08	12,569
Feb-08	12,522
Mar-08	12,713
Apr-08	14,556
May-08	13,835
Jun-08	10,936
Jul-08	11,048
Aug-08	11,254
Sep-08	12,938
Oct-08	13,163
Nov-08	10,284
Dec-08	10,607
Jan-09	11,284
Feb-09	12,203

Mar-09	13,822
Apr-09	12,825
May-09	13,436
Jun-09	11,401
Jul-09	11,175
Aug-09	11,748
Sep-09	12,386
Oct-09	12,075
Nov-09	10,945
Dec-09	10,860
Jan-10	11,160
Feb-10	10,957
Mar-10	14,218
Apr-10	13,016
May-10	12,625
Jun-10	10,847
Jul-10	9,237
Aug-10	9,291

Table 2

The Number of Children Substantiated (including Services Needed)

Month	Number of Children with a Substantiated Report
Jan-01	3,158
Feb-01	3,032
Mar-01	3,271
Apr-01	3,047
May-01	3,399
Jun-01	2,924
Jul-01	3,178
Aug-01	3,487
Sep-01	3,119
Oct-01	3,432
Nov-01	2,900
Dec-01	2,428
Jan-02	2,985
Feb-02	2,977
Mar-02	2,999
Apr-02	3,483
May-02	3,281
Jun-02	2,671
Jul-02	3,253
Aug-02	3,314
Sep-02	3,280
Oct-02	3,136
Nov-02	2,609
Dec-02	2,370
Jan-03	3,119
Feb-03	2,871
Mar-03	3,149
Apr-03	3,015
May-03	3,091
Jun-03	2,611
Jul-03	2,694
Aug-03	2,964

Sep-03	3,098
Oct-03	3,178
Nov-03	2,484
Dec-03	2,289
Jan-04	2,624
Feb-04	2,882
Mar-04	3,541
Apr-04	3,312
May-04	2,985
Jun-04	2,709
Jul-04	2,849
Aug-04	3,222
Sep-04	3,148
Oct-04	2,890
Nov-04	2,718
Dec-04	2,469
Jan-05	3,017
Feb-05	2,664
Mar-05	3,092
Apr-05	3,114
May-05	2,841
Jun-05	2,730
Jul-05	2,489
Aug-05	2,984
Sep-05	2,988
Oct-05	2,756
Nov-05	2,435
Dec-05	2,219
Jan-06	2,734
Feb-06	2,730
Mar-06	2,895
Apr-06	2,643
May-06	2,879
Jun-06	2,268
Jul-06	2,373
Aug-06	2,745
Sep-06	2,570
Oct-06	2,610
Nov-06	2,186

Month	Number of Children with a Substantiated Report
Dec-06	2,069
Jan-07	2,435
Feb-07	2,426
Mar-07	2,698
Apr-07	2,487
May-07	2,767
Jun-07	2,286
Jul-07	2,183
Aug-07	2,429
Sep-07	2,320
Oct-07	2,465
Nov-07	2,154
Dec-07	1,941
Jan-08	2,589
Feb-08	2,291
Mar-08	2,270
Apr-08	2,618
May-08	2,422
Jun-08	1,981
Jul-08	2,223
Aug-08	2,192
Sep-08	2,410
Oct-08	2,415
Nov-08	1,857
Dec-08	2,011
Jan-09	2,235
Feb-09	2,183
Mar-09	2,526
Apr-09	2,415
May-09	2,381
Jun-09	2,057
Jul-09	2,157
Aug-09	2,341
Sep-09	2,274
Oct-09	2,182

Nov-09	1,975
Dec-09	1,944
Jan-10	2,043
Feb-10	2,047
Mar-10	2,632
Apr-10	2,433
May-10	2,254
Jun-10	2,104
Jul-10	1,817
Aug-10	1,796

Table 3

The Number of Children by Type of Finding (Not Based on a Unique Count of Children; Some Children May Have Multiple Reports Investigated at the Same Time)

Month	Dependency	Abuse	Abuse and Neglect	Neglect	Services Needed	Services Provided, No Longer Needed	Services Recommended	Services Not Recommended	Unsubstantiated
Jan-00	39	143	89	2,342	5	0	2	3	6,090
Feb-00	58	205	130	2,903	0	0	7	0	7,879
Mar-00	52	204	102	2,907	1	0	1	0	8,725
Apr-00	29	161	125	2,419	0	0	0	0	6,491
May-00	45	167	106	2,863	0	0	0	9	8,183
Jun-00	43	172	99	2,611	4	0	0	0	6,785
Jul-00	48	136	101	2,607	0	0	0	2	6,695
Aug-00	59	156	143	2,984	0	0	0	2	8,094
Sep-00	34	173	141	2,761	6	2	1	9	7,481
Oct-00	70	171	123	2,814	0	0	1	0	8,221
Nov-00	36	145	80	2,579	0	0	1	0	6,967
Dec-00	29	141	86	2,069	0	0	0	0	5,630
Jan-01	33	156	108	2,861	0	0	0	0	7,798
Feb-01	29	161	115	2,727	0	0	0	0	7,361
Mar-01	49	159	129	2,934	0	0	1	2	8,511
Apr-01	38	134	107	2,768	0	0	0	2	7,663
May-01	47	170	113	3,069	0	2	0	1	8,637
Jun-01	42	181	113	2,587	1	0	1	3	6,536
Jul-01	51	175	109	2,843	0	0	0	1	6,733
Aug-01	61	197	120	3,109	0	0	0	0	8,496
Sep-01	44	159	98	2,818	0	0	0	0	7,271
Oct-01	46	198	100	3,088	0	0	4	3	8,977
Nov-01	37	180	80	2,602	1	0	0	4	7,644
Dec-01	43	150	78	2,157	0	0	0	2	6,345
Jan-02	56	143	99	2,687	0	0	0	9	7,836
Feb-02	39	177	98	2,651	12	0	0	10	8,496
Mar-02	41	128	121	2,709	0	0	0	3	8,848
Apr-02	52	154	105	3,172	0	0	0	0	9,458
May-02	50	155	109	2,963	4	0	4	2	8,677
Jun-02	52	144	99	2,376	0	0	4	4	6,821
Jul-02	52	136	163	2,883	19	0	0	25	7,639
Aug-02	54	141	135	2,929	55	0	38	234	8,508
Sep-02	43	171	135	2,856	75	0	42	380	8,198

Month	Dependency	Abuse	Abuse and Neglect	Neglect	Services Needed	Services Provided, No Longer Needed	Services Recommended	Services Not Recommended	Unsubstantiated
Oct-02	53	142	114	2,753	74	0	44	445	8,787
Nov-02	44	126	81	2,276	82	0	62	302	7,191
Dec-02	27	110	64	2,090	79	0	53	249	5,845
Jan-03	44	144	98	2,735	98	0	84	366	7,511
Feb-03	44	132	83	2,494	118	0	204	457	7,068
Mar-03	62	134	114	2,643	196	0	274	543	8,384
Apr-03	51	147	107	2,517	193	0	311	714	7,609
May-03	55	140	129	2,592	175	0	374	704	7,923
Jun-03	53	121	80	2,157	200	0	389	531	6,197
Jul-03	37	149	89	2,241	178	0	495	624	6,691
Aug-03	46	150	112	2,426	230	0	596	682	7,405
Sep-03	60	163	132	2,399	344	0	719	674	7,295
Oct-03	76	161	198	2,424	319	0	822	810	8,041
Nov-03	41	118	118	1,921	286	0	648	709	6,380
Dec-03	31	100	74	1,804	280	2	563	646	5,802
Jan-04	38	159	95	2,014	318	2	565	669	6,409
Feb-04	58	134	124	2,271	295	0	618	769	7,066
Mar-04	50	182	128	2,741	440	0	915	1,060	8,488
Apr-04	55	153	131	2,515	458	0	915	1,047	7,631
May-04	51	169	95	2,220	450	0	1,001	1,172	7,012
Jun-04	51	120	103	1,986	449	0	884	1,200	5,844
Jul-04	48	156	126	1,937	582	0	933	1,466	5,715
Aug-04	59	163	85	2,229	686	0	1,206	1,816	6,283
Sep-04	51	166	152	2,124	655	3	1,188	1,810	6,333
Oct-04	68	167	123	1,811	721	3	1,263	2,050	6,278
Nov-04	47	144	112	1,852	563	0	1,127	1,790	5,660
Dec-04	55	128	89	1,636	561	0	1,027	1,522	4,776
Jan-05	56	154	107	1,975	725	3	1,253	1,829	5,708
Feb-05	23	133	130	1,760	618	4	1,358	1,803	5,237
Mar-05	55	165	125	1,884	863	0	1,373	2,118	5,714
Apr-05	54	162	121	1,943	834	0	1,503	2,386	5,657
May-05	30	150	102	1,790	769	2	1,638	2,392	5,544
Jun-05	43	131	112	1,657	787	2	1,291	2,100	4,455
Jul-05	26	131	92	1,554	686	1	1,169	1,989	4,299
Aug-05	46	155	142	1,842	799	1	1,358	2,316	5,338
Sep-05	36	157	133	1,794	868	2	1,699	2,472	5,560
Oct-05	48	152	110	1,643	803	13	1,535	2,234	5,440

Month	Dependency	Abuse	Abuse and Neglect	Neglect	Services Needed	Services Provided, No Longer Needed	Services Recommended	Services Not Recommended	Unsubstantiated
Nov-05	25	125	94	1,459	732	28	1,409	1,978	4,778
Dec-05	47	110	106	1,251	705	47	1,271	1,982	4,020
Jan-06	41	136	128	1,587	842	175	1,613	2,241	4,644
Feb-06	32	120	123	1,493	962	243	1,578	2,520	4,424
Mar-06	51	173	162	1,462	1,047	355	1,991	3,358	5,138
Apr-06	44	149	154	1,246	1,050	381	1,633	2,923	4,040
May-06	81	146	164	1,333	1,155	474	1,852	3,483	4,723
Jun-06	51	85	106	1,055	971	415	1,361	2,879	3,611
Jul-06	33	99	81	1,107	1,053	420	1,375	2,859	3,151
Aug-06	51	122	105	1,249	1,218	506	1,556	3,375	3,514
Sep-06	43	111	100	1,126	1,190	546	1,693	3,461	3,481
Oct-06	41	98	101	1,136	1,234	640	1,915	3,637	3,542
Nov-06	44	89	121	939	993	578	1,579	3,268	2,952
Dec-06	31	74	55	915	994	510	1,571	2,967	2,586
Jan-07	33	110	122	1,062	1,108	668	2,016	3,610	3,112
Feb-07	31	90	126	1,021	1,158	690	1,976	3,692	3,127
Mar-07	41	105	132	1,113	1,307	736	2,284	4,493	3,424
Apr-07	36	122	136	1,001	1,192	698	2,139	4,000	3,035
May-07	49	84	116	1,095	1,423	824	2,451	4,672	3,375
Jun-07	45	97	94	848	1,202	681	1,739	3,643	2,402
Jul-07	44	84	89	939	1,027	733	1,766	3,839	2,332
Aug-07	54	98	141	926	1,210	742	2,056	4,117	2,714
Sep-07	32	71	99	845	1,273	822	2,112	4,346	2,498
Oct-07	47	74	104	833	1,407	881	2,350	4,871	2,976
Nov-07	35	95	98	740	1,186	708	1,929	4,104	2,527
Dec-07	29	79	65	723	1,045	627	1,868	3,485	2,058
Jan-08	40	84	90	924	1,451	810	2,366	4,273	2,531
Feb-08	37	89	83	813	1,269	786	2,453	4,408	2,584
Mar-08	36	74	101	876	1,183	844	2,442	4,639	2,518
Apr-08	24	97	94	949	1,454	984	2,721	5,291	2,942
May-08	30	126	73	936	1,257	912	2,619	5,270	2,612
Jun-08	29	68	102	698	1,084	641	1,883	4,335	2,096
Jul-08	24	90	63	757	1,289	754	1,915	4,088	2,068
Aug-08	16	111	90	655	1,320	734	1,948	4,317	2,063
Sep-08	23	85	84	842	1,376	970	2,362	4,933	2,263
Oct-08	37	82	97	807	1,392	993	2,316	5,020	2,419
Nov-08	45	67	101	621	1,023	710	1,884	3,917	1,916

Month	Dependency	Abuse	Abuse and Neglect	Neglect	Services Needed	Services Provided, No Longer Needed	Services Recommended	Services Not Recommended	Unsubstantiated
Dec-08	30	74	99	700	1,108	787	1,898	3,907	2,004
Jan-09	30	71	90	727	1,317	743	1,994	4,130	2,182
Feb-09	33	87	82	722	1,259	923	2,406	4,474	2,217
Mar-09	40	98	107	920	1,361	903	2,752	5,033	2,608
Apr-09	35	94	89	761	1,436	882	2,556	4,673	2,299
May-09	36	93	71	851	1,330	873	2,756	4,916	2,510
Jun-09	31	80	75	745	1,126	769	2,124	4,378	2,073
Jul-09	32	85	88	688	1,264	717	2,191	4,191	1,919
Aug-09	50	108	109	819	1,255	780	2,345	4,109	2,173
Sep-09	37	81	74	781	1,301	840	2,583	4,346	2,343
Oct-09	44	68	93	670	1,307	815	2,348	4,489	2,241
Nov-09	31	94	57	682	1,111	667	2,278	3,807	2,218
Dec-09	37	87	74	634	1,112	777	2,239	3,787	2,113
Jan-10	27	82	88	660	1,186	770	2,425	3,880	2,042
Feb-10	35	90	117	659	1,146	753	2,165	3,901	2,091
Mar-10	32	98	139	858	1,505	957	3,124	4,888	2,617
Apr-10	24	102	93	893	1,321	859	2,922	4,512	2,290
May-10	30	108	116	759	1,241	769	2,863	4,691	2,048
Jun-10	20	76	69	695	1,244	806	2,389	3,830	1,718
Jul-10	23	62	81	524	1,127	672	1,897	3,309	1,542
Aug-10	29	88	62	566	1,051	628	1,975	3,374	1,518