

The Impact of the Pandemic on Child Welfare Caseload Trends



QUARTERLY
REPORT **APRIL**
2021

C. Joy Stewart • Dean F. Duncan, III • Steve Guest • Katy Malley • Wanda Reives

**Creating Indicators and Improving Outcomes:
Analytic Assistance for Child Welfare, Work First,
Food and Nutrition Services in North Carolina**

UNC-CH SCHOOL OF SOCIAL WORK
CHAPEL HILL, NC
APRIL 2021

The Impact of the Pandemic on Child Welfare Caseload Trends

(Quarterly Report: April 2021)

Main Points

- The COVID-19 pandemic had an unparalleled, widespread, and sustained impact on child welfare.
- There were significant decreases in maltreatment reports, substantiations, non-substantiated findings, entries and exits from foster care, which have yet to recover to pre-pandemic levels.
- Declines in referrals from educational personnel due to school closures and ongoing disruptions explained much of the decrease in maltreatment reports.
- The rate of decline was not as steep for substantiations, entries into foster care, and exits from foster care as that of non-substantiated findings and overall reports suggesting that the child welfare system continued to respond to the majority of children most at-risk and worked to achieve permanency for most of the children already in care.
- In future quarterly reports, we will continue to monitor the pandemic's effect to see if these trends continue as data are updated over time.

This report explores changes and trends in the child welfare caseload in North Carolina. This report covers the time period of the Covid-19 pandemic, which we define as beginning on March 16, 2020 when the governor ordered the statewide closure of North Carolina public schools. While the order only applied to public schools, many private schools and child care facilities also closed at least temporarily (Gordon, 2020; Ovaska, 2020). Eventually, the governor canceled the remainder of the school year and by June 2020, facilities were only serving about a third of all children enrolled in child care programs before the pandemic (Rivest, 2020). In addition, all children and their families were subject to statewide stay-at-home orders, prohibitions of large gatherings, and closures of businesses and recreational facilities that caused significant and unparalleled alterations to daily life.

This analysis is based on data extracted from state child welfare databases in early March 2021. These extracts are used to construct and maintain a longitudinal file that tracks the

experiences of children and youth who have been involved with the child welfare system in North Carolina. The analysis explores changes in the number of children reported as victims of maltreatment, the number of those reports which are substantiated, and the number of children entering and exiting foster care. Long-term trends are also discussed.

Figure One illustrates the changes in the number of children assessed for maltreatment¹ over time (specific monthly numbers can be found in Appendix A, Table One). As the figure indicates, while numbers fluctuate monthly, the number of children assessed monthly remained above 12,000 in 2016-2017 until a decline to just below 12,000 in 2018 which is illustrated by the twelve month average trend line. In December 2018, the monthly number of children assessed declined significantly to 9,448 children, which coincides with a major winter storm that produced record snowfalls and widespread power outages across the state (Samenow, 2018). The number of children assessed per month rebounded in January to 12,871 and the twelve month average went above 12,000 again by the end of 2019. At the beginning of 2020, the number per month was similar to previous years until a decline in March 2020 and a precipitous drop to 7,998 in April 2020 which is apparently due to the pandemic. In the past twenty years, there has only been one month in which the number was similarly low at 7,957 children in December 2000. There was also an unusual weather event in that month with a snowstorm that significantly impacted the eastern part of the state which is typically less likely to be affected by snowfall (Badgett, Baines, Blaes, Hartfield, Keeter, n.d.). The trend for 2020 shows that, while increasing, the number of children assessed per month has not yet returned to the pre-pandemic level in contrast to the temporary effect of weather events.

¹The number of children tracked in Figures One through Five of this report do not provide a unique count of children per year. There are a number of instances in which a child may be counted more than once in the analyses for this report. For example, a child may have more than one report investigated within a calendar year. Also, there are some instances where two separate investigations about an individual child are concluded within the same calendar month. However, instances where there are separate allegations of maltreatment for an individual child with the same case decision date are collapsed into a single report. Also, state policies require that when a report of maltreatment is received, all children living in the home must be assessed as a possible victim of maltreatment. As a result, the number of children reported as victims of maltreatment could fluctuate based upon the sizes of families involved, even as the number of reports remains steady.

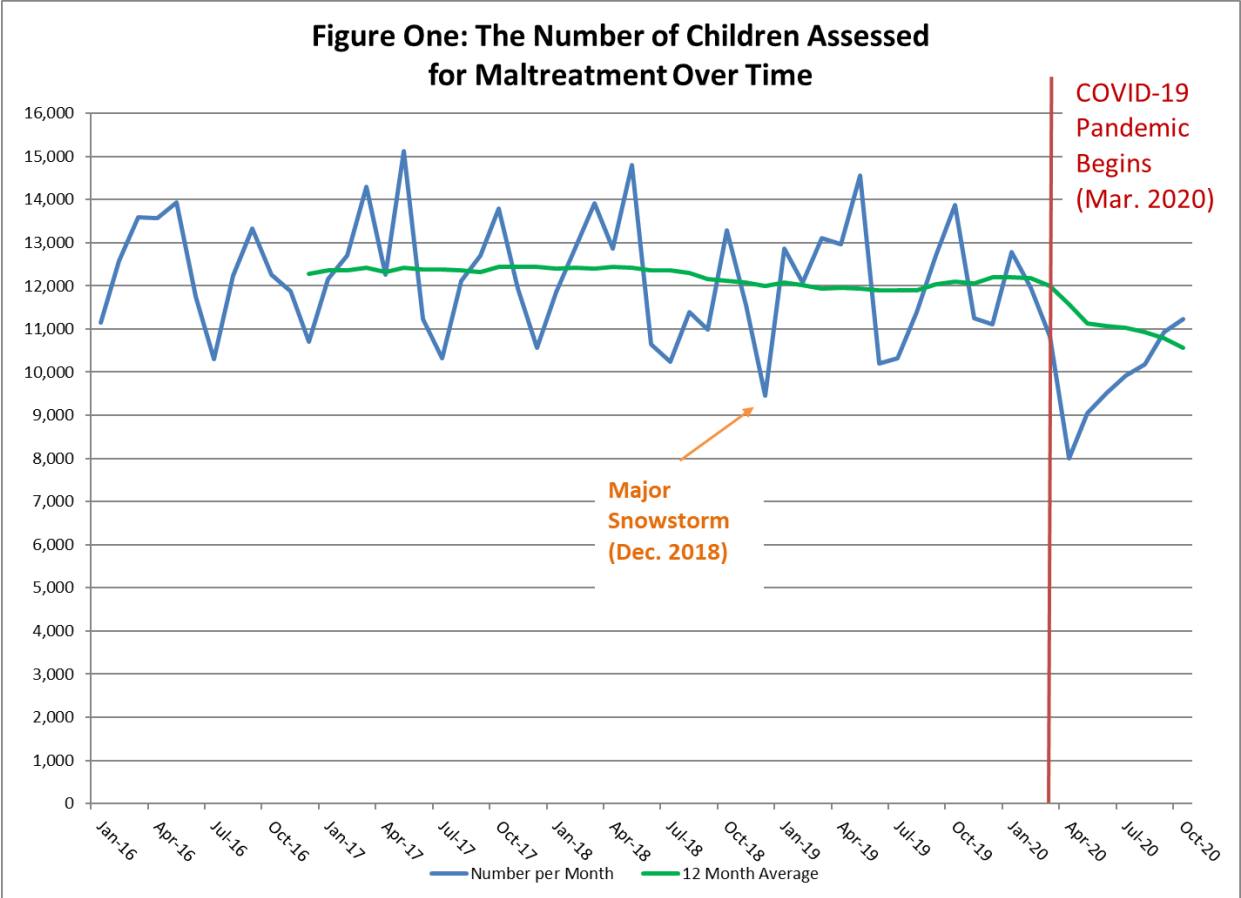
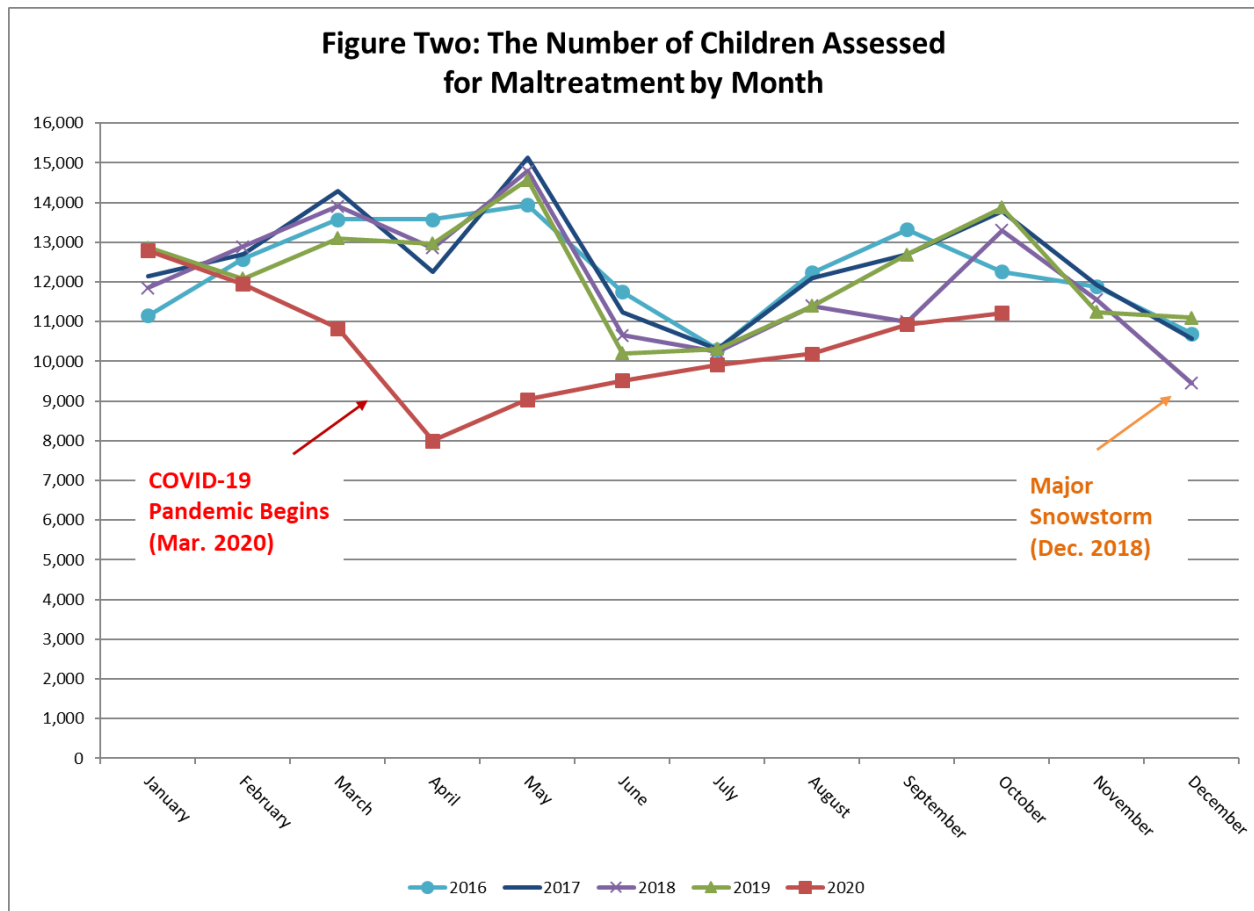


Figure Two shows the pattern of the number of children assessed each month by year from January 2016 through October 2020. This figure is helpful in showing seasonal variation and offers an even more stark view of the pandemic’s effect. Much as of the usual seasonal variation appears tied to the school calendar. As the figure indicates, the number of children assessed generally peaks in May, then falls in June and July reflecting declining reports from educational personnel during summer months. The number of children increases in August as school starts and then rises through October. The number of children assessed then declines through December reflecting periods of holidays and school breaks. As noted earlier weather events may affect these patterns, such as the December 2018 winter storm. The pattern for 2020 was far different with the severe declines in March and April 2020 before a slow increase through October 2020, which has still not returned to the pre-pandemic level.



In **Figure Three**, we take a closer look at the referral sources for children who were assessed (specific monthly numbers can be found in Appendix A, Table Two). In this figure, the time period shown is shortened to January 2018 to October 2020 so that trends in the most recent months are more easily viewed. As the figure illustrates, the declines in referrals from educational personnel in the summer months, in particular, account for the overall decrease in assessments for these months. While there is monthly variation, referrals from other sources tend to be more consistent over time. At the onset of the pandemic in March 2020, educational personnel referrals decreased significantly and continued to fall through July 2020 with an uptick in August 2020 through October 2020. However, they are still far below pre-pandemic levels. In the period of continued decline for educational referrals from April 2020 to July 2020, referrals tended to increase for human services personnel, non-relative, relative, anonymous, and parental sources and hold steady for law or court personnel and medical provider sources. To some extent, this pattern can be seen in June and July for other years, but it is certainly more pronounced in the period after the pandemic began. Thus,

we conclude that the majority of decreases in the number of children assessed during the pandemic were related to fewer referrals from educational personnel. Overall, these trends highlight the important role that the educational system plays in child protection.

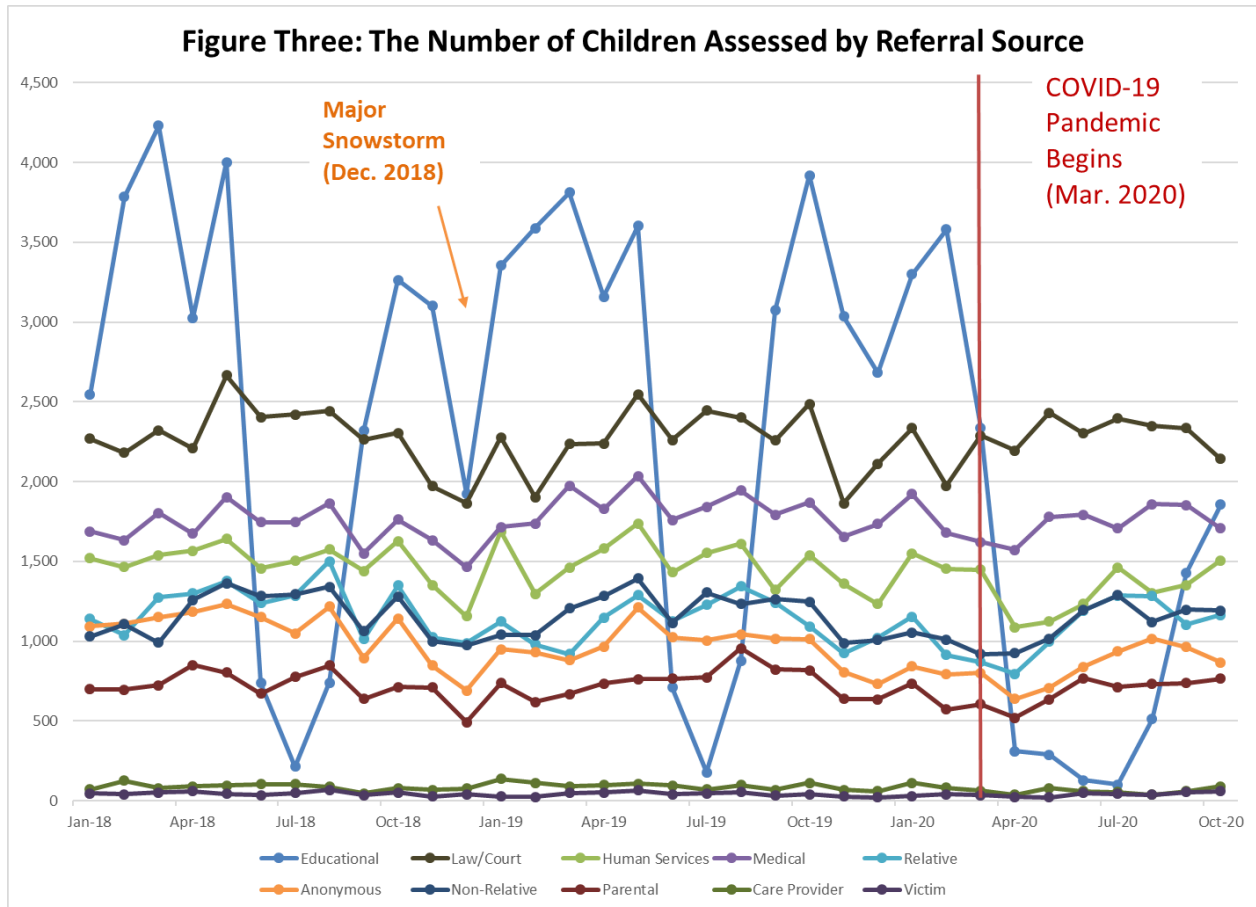


Figure Four illustrates the number of children whose maltreatment reports were substantiated. Specific monthly numbers can be found in Appendix A, Table Three. A report is considered substantiated if there is a finding of abuse, neglect, abuse and neglect, dependency, or services needed. These findings indicate that child protective services confirmed that a child was maltreated and/or that further services are needed to address concerns. It does not include instances where the finding was services provided, child protective services no longer needed. Again, these reports are not based on a unique count of children per year. Given that they are related, much of the trends in the number of substantiations reflect those of the assessments, although they are not entirely dependent as substantiations are based on case decisions related to the allegations made in reports. The

average number per month remained at about 2,000 until early 2018 when a decline to about 1,900 began to about 1,900 through 2019. Like the number of assessments, the number of substantiations decreased at the onset of the pandemic, although the drop was not as severe, and was actually more pronounced in December 2018. Still the average of about 1,700 for 2020 is lower than the pre-pandemic level.

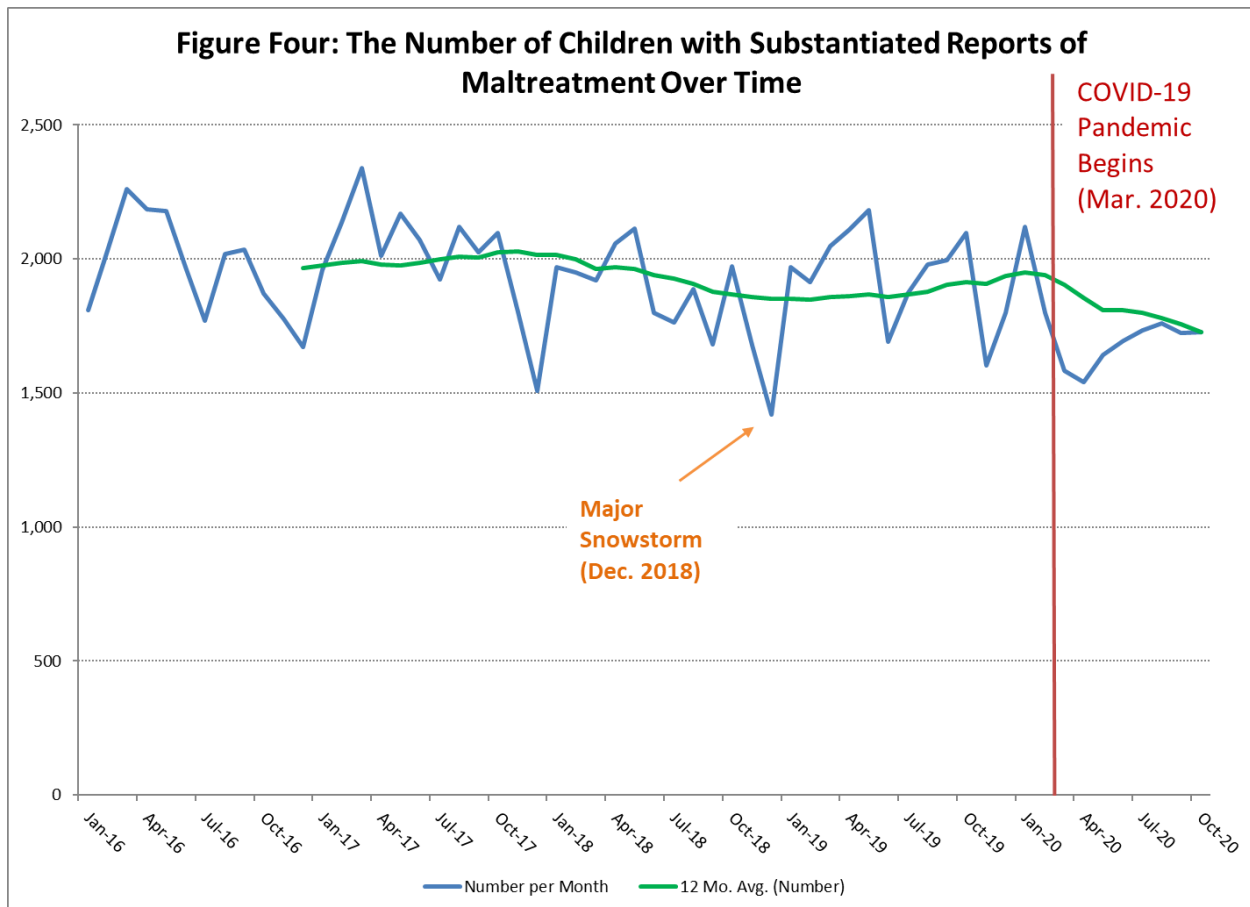


Figure Five illustrates the number of children by assessment finding type over time (see Appendix A, Table Four for specific monthly numbers). Unlike Figure Four, this figure includes all finding types and not just those that are “substantiated” (abuse, neglect, abuse and neglect, dependency, and services needed). While the monthly numbers fluctuate, the percentage of substantiated reports consistently makes up about 16% of findings while all others are about 84%(services provided, services recommended, services not recommended, and unsubstantiated) . This trend was noticeably different after the onset of the pandemic. While numbers decreased across finding types, the substantiated reports made up a higher

percentage than usual at about 19% versus 81% for all other types in April 2020 indicating that substantiated reports did not decline at the same rate as non-substantiated finding types. This contrasts with the December 2018 snowstorm in which all finding types declined at similar rates. Thus, even in the face of declining reports overall due to the pandemic, it appears that the child protective services system continued to detect and address the majority of the most severe cases of maltreatment.

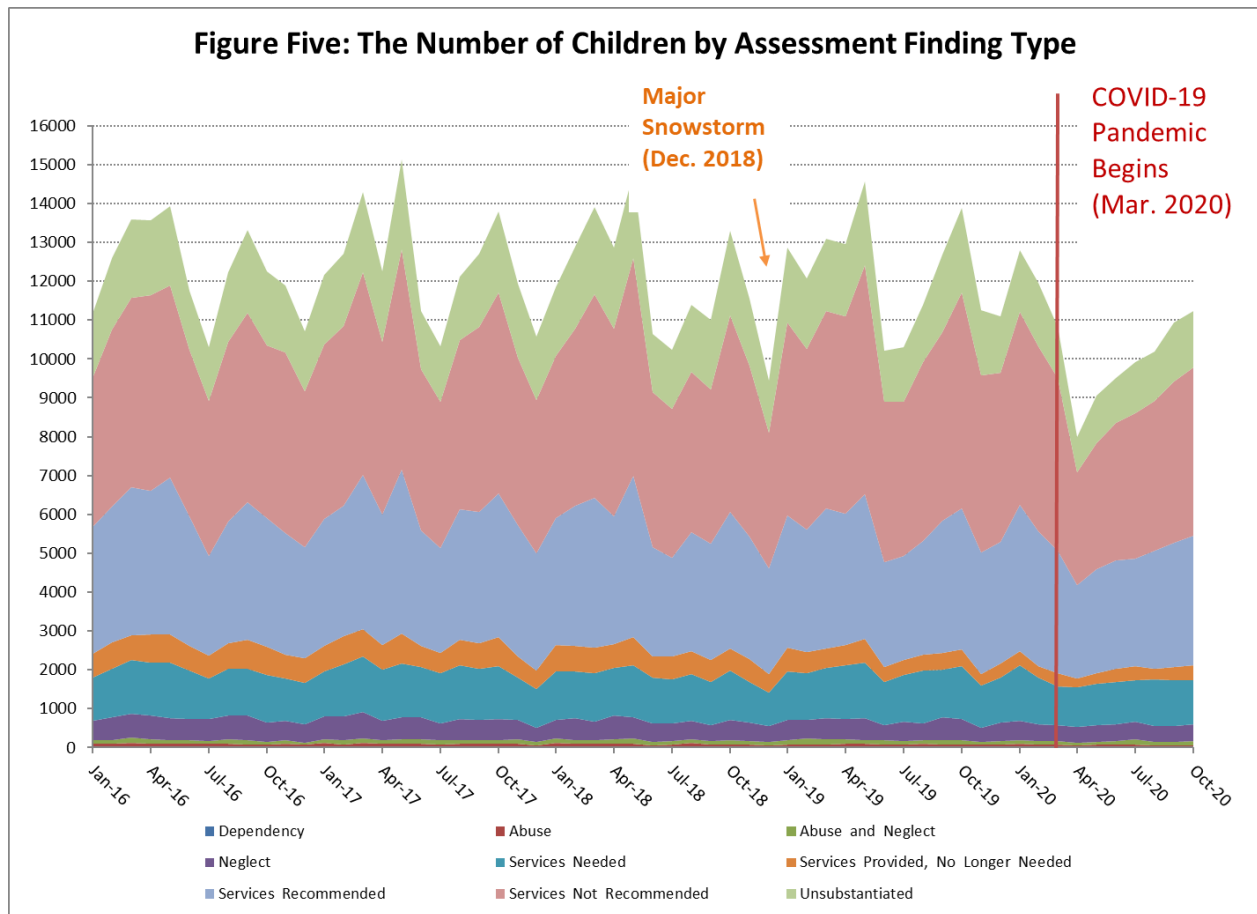


Figure Six reports the number of children entering foster care for the first time, the total entries (including re-entries into care), and the twelve month average for total entries. Children enter foster care when child protective services determines that the risk of harm to a child is too great in order to safely remain in the home and obtain a court order to assume custody of the child. Specific monthly numbers can be found in Appendix A, Table Five. Over time, about 83% to 88% of children entering care each month are coming into care for the first time. According to the figure, the twelve month average shows that there were about 514

children entering care per month in 2016 which increased slightly to about 523 in 2017. The number decreased to about 484 in 2018 and slightly again to 481 in 2019. As we saw in other caseload figures, both the initial and total number of entries decreased significantly after the onset of the pandemic, in particular in April 2020 with a low for initial entries of 271 and 327 for total entries, which were lows not seen in the past twenty years. The number of entries began to rise again in May, however, the average for 2020 is still below the pre-pandemic level. This trend is also notable in that entries into care, like substantiations, did not decline as greatly as maltreatment reports overall. Again, this would suggest that the child welfare system, including the courts, continued to respond to the majority of children at the most risk.

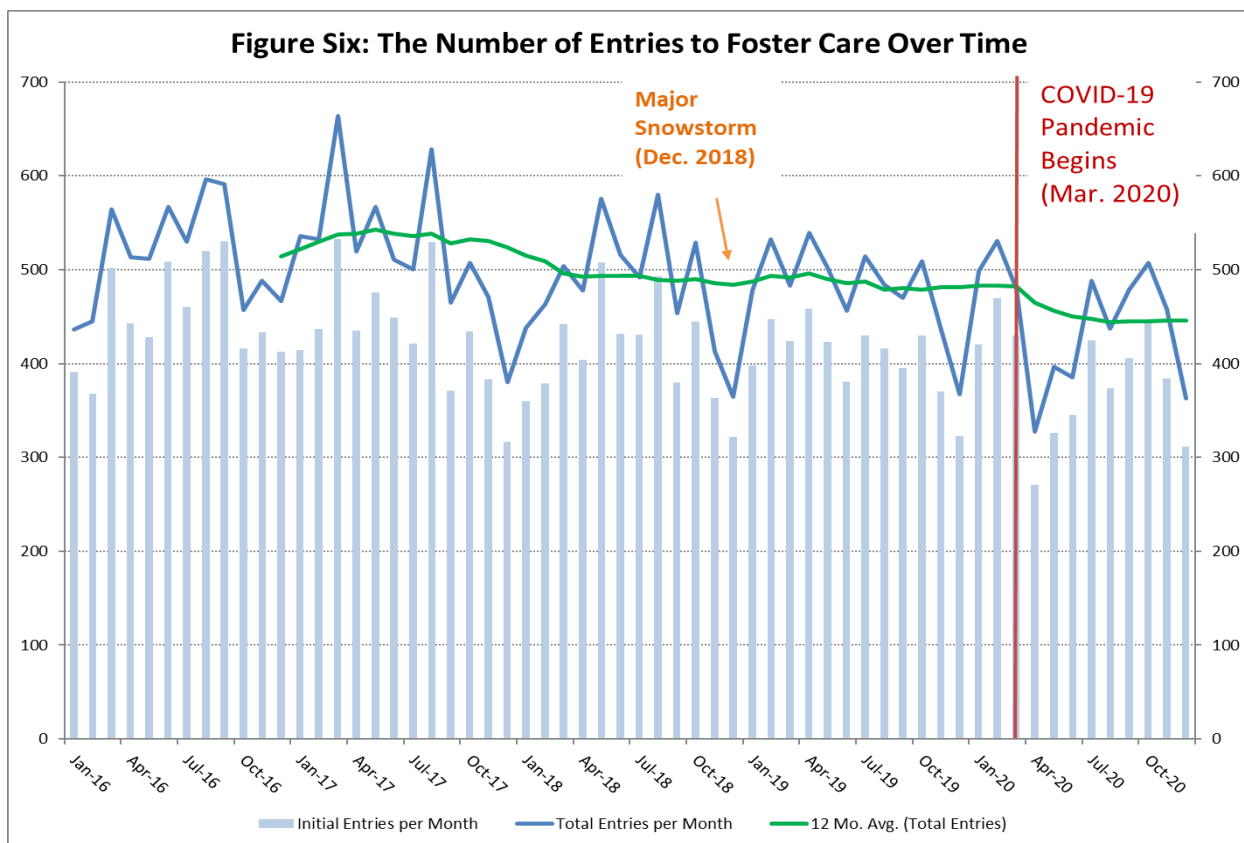
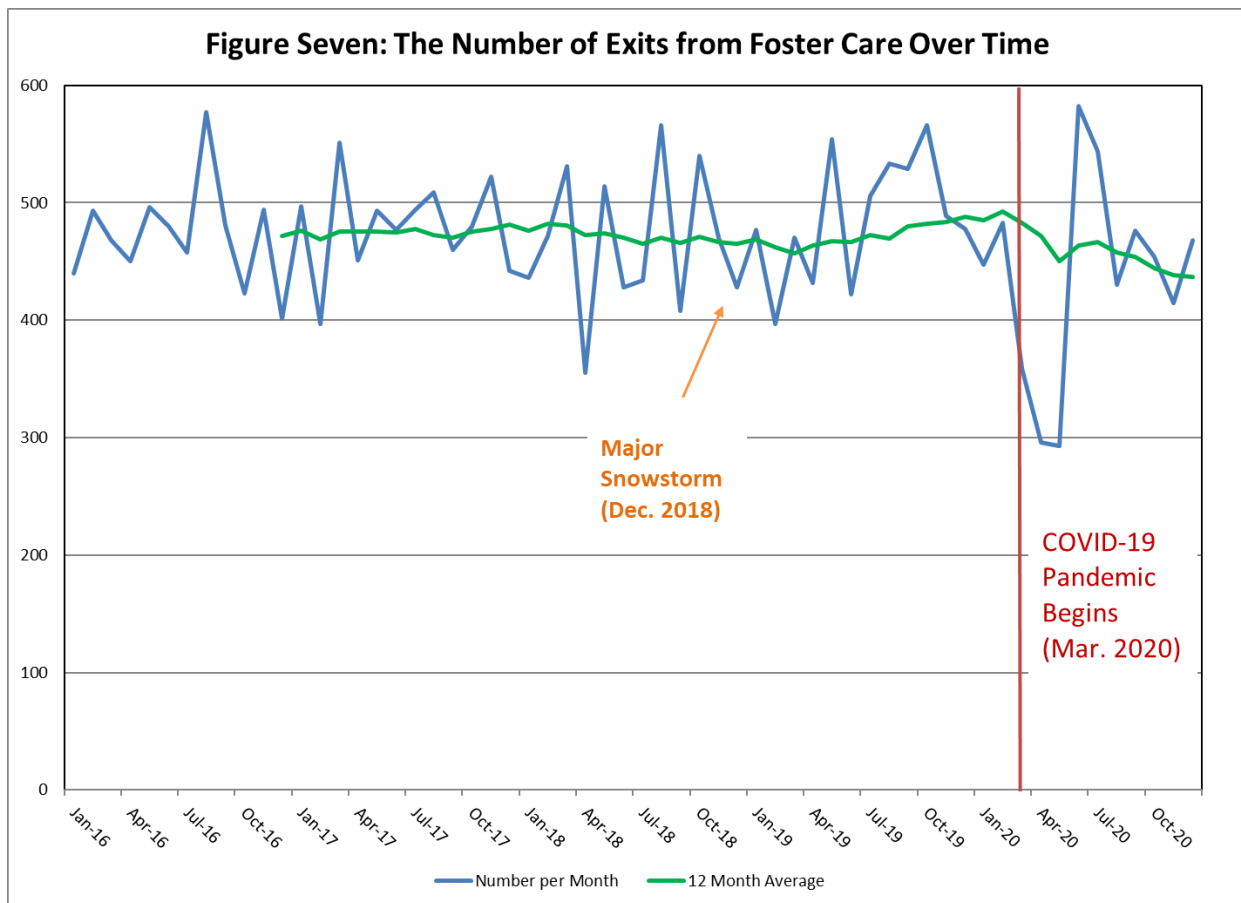


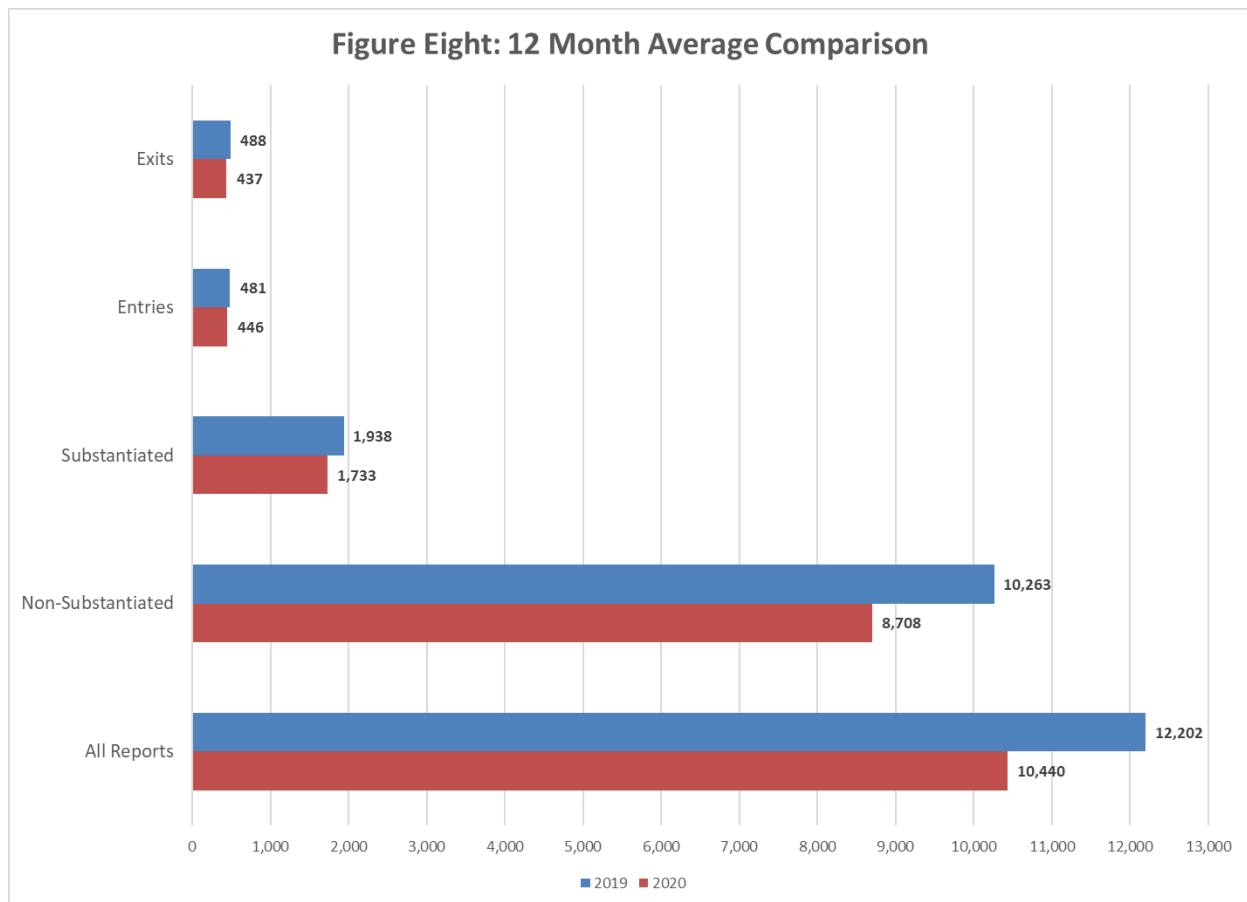
Figure Seven shows the number of children exiting foster care each month as well as the twelve month average (see Appendix A, Table Six for specific monthly numbers). Most children leave foster care when permanency is achieved, such as reunification with parents, custody or guardianship with a relative/caretaker, or adoption. They may also leave through emancipation or aging out of care at 18 or other less common reasons (for example, death, running away, or court revoking placement authority). As Figure Seven indicates, the number

of children exiting foster care fluctuates considerably from month to month. The annual average for 2016 was about 472 children which increased somewhat to about 481 in 2017. The average then declined to 465 in 2018 before increasing again to 488 in 2019. An effect from the December 2018 snowstorm was not observed in exits per month. There has been considerable concern that the pandemic would not only affect reports of maltreatment and entries into foster care, but also that children would stay in care longer due to delays in efforts to achieve permanency and disruptions in the court system, such as postponed permanency planning hearings. Indeed, Figure Seven shows that exits began declining in March 2020 to 359 and then dropped significantly to 296 in April 2020 and 293 in May 2020, which were lows not seen in the past twenty years. Exits went back up sharply in to 582 in June 2020 and remained high at 544 in July 2020. Like substantiations and entries, exits from care did not decline as steeply as maltreatment reports overall. Nonetheless, the average for 2020 was 437 which is still below the pre-pandemic level.



Summary

In summary, the pandemic had an unparalleled, widespread, and sustained impact on child welfare by decreasing maltreatment reports, substantiations, non-substantiated findings, entries and exits from foster care, which have yet to recover to pre-pandemic levels. Significant declines in referrals from educational personnel due to school closures and ongoing disruptions explained much of the decrease in maltreatment reports. While the number of children substantiated also decreased by about 12%, the decline was not as steep as that of non-substantiated findings (18%) and overall reports (17%) as can be seen in **Figure Eight**. This figure compares the twelve month average for 2019 to 2020 across the different areas of child welfare. Similarly, foster care entries and exits also decreased by 8% and 11.5% respectively, but not as much as non-substantiated findings and overall reports. Thus, it appears that the child welfare system continued to respond to the majority of children most at-risk and worked to achieve permanence for most of the children already in care. In future quarterly reports, we will continue to monitor the pandemic's effect to see if these trends continue as data are updated over time.



This research is funded through a contract with the North Carolina Division of Social Services. The views expressed are those of the authors. Any errors due to the interpretation of the analysis of the data are the authors' alone.

Additional information on the child welfare program at the state or county level is available through the Management Assistance for Child Welfare, Work First, and Food and Nutrition Services web site, <http://ssw.unc.edu/ma/>.

A PDF version of this report can be found at http://sasweb.unc.edu/cgi-bin/broker?_service=default&_program=dgweb.help.sas&county=North%20Carolina&label=&entry=1&help=papers_cw&entry=1&anchor=

This report was designed by Rea Aarnio of the UNC-CH School of Social Work.

References

- Badgett, P., Baines, S., Blaes, J., Hartfield, G., & Keeter, K. (n.d.). Event summary: December 2-3, 2000 winter storm. National Weather Service, Raleigh NC. https://projects.ncsu.edu/atmos_collaboration/nwsfo/storage/cases/20001203/#snowclim
- Gordon, B. (2020, August 10). With more autonomy, N.C. private schools plan more aggressive reopenings. Asheville Citizen Times. <https://www.citizen-times.com/story/news/local/2020/07/26/nc-private-schools-reopen-full-classrooms-students-during-covid-19/5477899002/>
- Ovaska, S. (2020, March 27). Child care centers struggle with conflicting advice during COVID-19 outbreak. North Carolina Health News. <https://www.northcarolinahealthnews.org/2020/03/27/covid-19-child-care-centers/>
- Rivest, M. (2020). The status of child care program in North Carolina. North Carolina Early Education Coalition. <https://www.nearlyeducationcoalition.org/wp-content/uploads/2020/06/Status-of-Child-Care-by-County-6.22.20.pdf>

Appendix A

**Table One:
The Number of Children Assessed for Maltreatment**

| Month | Number of Children Assessed | Month | Number of Children Assessed |
|--------|-----------------------------|--------|-----------------------------|
| Jan-16 | 11,156 | Jun-18 | 10,652 |
| Feb-16 | 12,585 | Jul-18 | 10,235 |
| Mar-16 | 13,583 | Aug-18 | 11,401 |
| Apr-16 | 13,580 | Sep-18 | 10,997 |
| May-16 | 13,943 | Oct-18 | 13,297 |
| Jun-16 | 11,758 | Nov-18 | 11,551 |
| Jul-16 | 10,300 | Dec-18 | 9,448 |
| Aug-16 | 12,235 | Jan-19 | 12,871 |
| Sep-16 | 13,327 | Feb-19 | 12,079 |
| Oct-16 | 12,261 | Mar-19 | 13,100 |
| Nov-16 | 11,885 | Apr-19 | 12,965 |
| Dec-16 | 10,701 | May-19 | 14,569 |
| Jan-17 | 12,155 | Jun-19 | 10,204 |
| Feb-17 | 12,709 | Jul-19 | 10,314 |
| Mar-17 | 14,288 | Aug-19 | 11,393 |
| Apr-17 | 12,261 | Sep-19 | 12,694 |
| May-17 | 15,123 | Oct-19 | 13,881 |
| Jun-17 | 11,227 | Nov-19 | 11,245 |
| Jul-17 | 10,319 | Dec-19 | 11,105 |
| Aug-17 | 12,110 | Jan-20 | 12,794 |
| Sep-17 | 12,698 | Feb-20 | 11,956 |
| Oct-17 | 13,788 | Mar-20 | 10,835 |
| Nov-17 | 11,931 | Apr-20 | 7,998 |
| Dec-17 | 10,572 | May-20 | 9,046 |
| Jan-18 | 11,856 | Jun-20 | 9,514 |
| Feb-18 | 12,893 | Jul-20 | 9,915 |
| Mar-18 | 13,910 | Aug-20 | 10,188 |
| Apr-18 | 12,858 | Sep-20 | 10,930 |
| May-18 | 14,794 | Oct-20 | 11,225 |

**Table Two:
The Number of Children Assessed by Referral Source**

| Month | Educa- tional | Law/ Court | Human Services | Medical | Relative | Anony- mous | Non- Relative | Parental | Care Provider | Victim |
|--------|------------------|---------------|-------------------|---------|----------|----------------|------------------|----------|------------------|--------|
| Jan-16 | 2263 | 2229 | 1439 | 1437 | 1172 | 1163 | 1042 | 583 | 87 | 52 |
| Feb-16 | 3352 | 2291 | 1603 | 1393 | 1204 | 1154 | 1035 | 713 | 103 | 32 |
| Mar-16 | 3275 | 2651 | 1778 | 1529 | 1338 | 1377 | 1197 | 684 | 63 | 60 |
| Apr-16 | 3290 | 2480 | 1760 | 1452 | 1145 | 1524 | 1397 | 758 | 74 | 41 |
| May-16 | 3438 | 2755 | 1656 | 1473 | 1245 | 1516 | 1286 | 780 | 78 | 53 |
| Jun-16 | 835 | 2738 | 1692 | 1578 | 1391 | 1419 | 1421 | 816 | 83 | 59 |
| Jul-16 | 179 | 2417 | 1479 | 1448 | 1298 | 1451 | 1386 | 748 | 76 | 36 |
| Aug-16 | 461 | 2781 | 1662 | 1571 | 1773 | 1428 | 1736 | 916 | 108 | 69 |
| Sep-16 | 2725 | 2593 | 1600 | 1664 | 1387 | 1366 | 1405 | 781 | 91 | 75 |
| Oct-16 | 2863 | 2459 | 1455 | 1320 | 1294 | 1164 | 1279 | 632 | 77 | 43 |
| Nov-16 | 2836 | 2222 | 1509 | 1349 | 1038 | 1117 | 1195 | 714 | 102 | 39 |
| Dec-16 | 2346 | 2205 | 1308 | 1312 | 1080 | 1049 | 925 | 631 | 47 | 33 |
| Jan-17 | 2743 | 2255 | 1531 | 1583 | 1312 | 1090 | 1089 | 726 | 87 | 36 |
| Feb-17 | 3479 | 2287 | 1485 | 1462 | 1208 | 1140 | 1142 | 670 | 78 | 45 |
| Mar-17 | 4072 | 2712 | 1574 | 1572 | 1271 | 1249 | 1297 | 693 | 101 | 67 |
| Apr-17 | 2532 | 2708 | 1389 | 1389 | 1268 | 1161 | 1285 | 668 | 82 | 49 |
| May-17 | 4000 | 2838 | 1704 | 1763 | 1428 | 1399 | 1407 | 791 | 123 | 37 |
| Jun-17 | 935 | 2530 | 1474 | 1690 | 1358 | 1233 | 1365 | 673 | 95 | 56 |
| Jul-17 | 208 | 2406 | 1427 | 1639 | 1311 | 1156 | 1353 | 887 | 76 | 56 |
| Aug-17 | 597 | 2626 | 1740 | 1825 | 1607 | 1384 | 1563 | 968 | 70 | 57 |
| Sep-17 | 2776 | 2384 | 1417 | 1693 | 1253 | 1177 | 1355 | 769 | 85 | 36 |
| Oct-17 | 3370 | 2419 | 1616 | 1824 | 1351 | 1360 | 1233 | 771 | 103 | 56 |
| Nov-17 | 3113 | 2053 | 1300 | 1644 | 1097 | 1020 | 1117 | 666 | 102 | 19 |
| Dec-17 | 2292 | 2151 | 1307 | 1550 | 943 | 911 | 843 | 699 | 64 | 14 |
| Jan-18 | 2544 | 2270 | 1521 | 1689 | 1140 | 1092 | 1030 | 698 | 72 | 47 |
| Feb-18 | 3786 | 2180 | 1466 | 1632 | 1037 | 1109 | 1106 | 695 | 127 | 40 |
| Mar-18 | 4232 | 2321 | 1538 | 1805 | 1275 | 1151 | 992 | 724 | 80 | 50 |
| Apr-18 | 3026 | 2210 | 1568 | 1674 | 1300 | 1184 | 1259 | 850 | 90 | 59 |
| May-18 | 4002 | 2665 | 1641 | 1904 | 1377 | 1232 | 1363 | 804 | 95 | 43 |
| Jun-18 | 738 | 2405 | 1457 | 1747 | 1240 | 1150 | 1282 | 672 | 105 | 36 |
| Jul-18 | 214 | 2422 | 1504 | 1747 | 1287 | 1050 | 1294 | 776 | 104 | 49 |
| Aug-18 | 740 | 2444 | 1574 | 1865 | 1501 | 1218 | 1340 | 849 | 87 | 67 |
| Sep-18 | 2319 | 2264 | 1441 | 1550 | 1014 | 894 | 1063 | 637 | 45 | 35 |
| Oct-18 | 3265 | 2306 | 1628 | 1763 | 1350 | 1143 | 1279 | 713 | 80 | 52 |
| Nov-18 | 3102 | 1971 | 1352 | 1634 | 1025 | 848 | 999 | 711 | 69 | 26 |
| Dec-18 | 1925 | 1865 | 1157 | 1465 | 987 | 690 | 974 | 492 | 77 | 41 |

| Month | Educa- tional | Law/ Court | Human Services | Medical | Relative | Anony- mous | Non- Relative | Parental | Care Provider | Victim |
|--------------|--------------------------|-----------------------|---------------------------|----------------|-----------------|------------------------|--------------------------|-----------------|--------------------------|---------------|
| Jan-19 | 3355 | 2278 | 1688 | 1715 | 1123 | 949 | 1041 | 738 | 136 | 27 |
| Feb-19 | 3589 | 1902 | 1298 | 1738 | 979 | 930 | 1037 | 620 | 112 | 25 |
| Mar-19 | 3813 | 2237 | 1461 | 1974 | 918 | 880 | 1207 | 669 | 90 | 49 |
| Apr-19 | 3160 | 2238 | 1581 | 1829 | 1147 | 967 | 1282 | 735 | 98 | 52 |
| May-19 | 3604 | 2547 | 1738 | 2036 | 1289 | 1210 | 1392 | 761 | 107 | 66 |
| Jun-19 | 711 | 2262 | 1433 | 1759 | 1125 | 1024 | 1114 | 765 | 95 | 40 |
| Jul-19 | 177 | 2447 | 1553 | 1842 | 1228 | 1005 | 1306 | 773 | 72 | 47 |
| Aug-19 | 878 | 2401 | 1612 | 1945 | 1344 | 1044 | 1232 | 954 | 99 | 54 |
| Sep-19 | 3075 | 2259 | 1322 | 1793 | 1242 | 1015 | 1264 | 822 | 67 | 33 |
| Oct-19 | 3921 | 2488 | 1538 | 1870 | 1093 | 1012 | 1246 | 817 | 113 | 40 |
| Nov-19 | 3034 | 1864 | 1360 | 1655 | 925 | 805 | 988 | 639 | 69 | 27 |
| Dec-19 | 2683 | 2111 | 1234 | 1734 | 1022 | 731 | 1007 | 635 | 59 | 21 |
| Jan-20 | 3301 | 2335 | 1551 | 1921 | 1153 | 841 | 1055 | 735 | 112 | 30 |
| Feb-20 | 3580 | 1974 | 1454 | 1681 | 915 | 793 | 1009 | 573 | 83 | 39 |
| Mar-20 | 2338 | 2290 | 1449 | 1623 | 869 | 801 | 919 | 604 | 62 | 36 |
| Apr-20 | 311 | 2194 | 1086 | 1572 | 796 | 639 | 924 | 520 | 37 | 23 |
| May-20 | 289 | 2432 | 1124 | 1778 | 996 | 706 | 1016 | 635 | 78 | 22 |
| Jun-20 | 128 | 2303 | 1233 | 1792 | 1193 | 839 | 1195 | 768 | 61 | 48 |
| Jul-20 | 101 | 2397 | 1461 | 1707 | 1286 | 937 | 1288 | 713 | 55 | 42 |
| Aug-20 | 511 | 2350 | 1303 | 1860 | 1282 | 1015 | 1121 | 733 | 37 | 37 |
| Sep-20 | 1428 | 2336 | 1352 | 1854 | 1103 | 963 | 1197 | 738 | 60 | 53 |
| Oct-20 | 1857 | 2143 | 1507 | 1708 | 1165 | 867 | 1191 | 766 | 91 | 61 |

**Table Three:
The Number of Children Substantiated (including Services Needed)**

| Month | Number of Children with a Substantiated Report | Month | Number of Children with a Substantiated Report |
|--------------|---|--------------|---|
| Jan-16 | 1,808 | Jun-18 | 1,798 |
| Feb-16 | 2,032 | Jul-18 | 1,762 |
| Mar-16 | 2,260 | Aug-18 | 1,889 |
| Apr-16 | 2,184 | Sep-18 | 1,681 |
| May-16 | 2,180 | Oct-18 | 1,974 |
| Jun-16 | 1,971 | Nov-18 | 1,679 |
| Jul-16 | 1,769 | Dec-18 | 1,418 |
| Aug-16 | 2,019 | Jan-19 | 1,969 |
| Sep-16 | 2,034 | Feb-19 | 1,913 |
| Oct-16 | 1,872 | Mar-19 | 2,048 |
| Nov-16 | 1,777 | Apr-19 | 2,109 |
| Dec-16 | 1,672 | May-19 | 2,183 |
| Jan-17 | 1,958 | Jun-19 | 1,692 |
| Feb-17 | 2,138 | Jul-19 | 1,874 |
| Mar-17 | 2,339 | Aug-19 | 1,978 |
| Apr-17 | 2,011 | Sep-19 | 1,995 |
| May-17 | 2,169 | Oct-19 | 2,096 |
| Jun-17 | 2,071 | Nov-19 | 1,603 |
| Jul-17 | 1,924 | Dec-19 | 1,799 |
| Aug-17 | 2,121 | Jan-20 | 2,121 |
| Sep-17 | 2,026 | Feb-20 | 1,799 |
| Oct-17 | 2,096 | Mar-20 | 1,583 |
| Nov-17 | 1,804 | Apr-20 | 1,542 |
| Dec-17 | 1,509 | May-20 | 1,642 |
| Jan-18 | 1,969 | Jun-20 | 1,696 |
| Feb-18 | 1,949 | Jul-20 | 1,733 |
| Mar-18 | 1,919 | Aug-20 | 1,759 |
| Apr-18 | 2,057 | Sep-20 | 1,725 |
| May-18 | 2,114 | Oct-20 | 1,726 |

Table Four: The Number of Children by Assessment Finding Type²

| Month | Dependency | Abuse | Abuse and Neglect | Neglect | Services Needed | Services Provided, No Longer Needed | Services Recommended | Services Not Recommended | Un-substantiated |
|--------|------------|-------|-------------------|---------|-----------------|-------------------------------------|----------------------|--------------------------|------------------|
| Jan-16 | 32 | 73 | 95 | 496 | 1,112 | 611 | 3,267 | 3,825 | 1,645 |
| Feb-16 | 29 | 63 | 98 | 597 | 1,245 | 683 | 3,491 | 4,545 | 1,834 |
| Mar-16 | 32 | 87 | 137 | 604 | 1,400 | 638 | 3,794 | 4,886 | 2,005 |
| Apr-16 | 21 | 86 | 114 | 607 | 1,356 | 722 | 3,696 | 5,031 | 1,947 |
| May-16 | 30 | 63 | 102 | 572 | 1,413 | 724 | 4,041 | 4,953 | 2,045 |
| Jun-16 | 37 | 66 | 96 | 527 | 1,245 | 646 | 3,333 | 4,276 | 1,532 |
| Jul-16 | 20 | 68 | 78 | 564 | 1,039 | 592 | 2,578 | 3,986 | 1,375 |
| Aug-16 | 17 | 85 | 104 | 611 | 1,202 | 664 | 3,128 | 4,625 | 1,799 |
| Sep-16 | 25 | 50 | 126 | 628 | 1,205 | 751 | 3,518 | 4,891 | 2,133 |
| Oct-16 | 17 | 54 | 73 | 495 | 1,233 | 718 | 3,320 | 4,445 | 1,906 |
| Nov-16 | 26 | 81 | 93 | 486 | 1,091 | 620 | 3,131 | 4,640 | 1,717 |
| Dec-16 | 14 | 52 | 60 | 468 | 1,078 | 631 | 2,854 | 4,002 | 1,542 |
| Jan-17 | 35 | 76 | 112 | 588 | 1,147 | 669 | 3,260 | 4,475 | 1,793 |
| Feb-17 | 19 | 66 | 94 | 633 | 1,326 | 726 | 3,353 | 4,638 | 1,854 |
| Mar-17 | 33 | 81 | 126 | 671 | 1,428 | 715 | 3,963 | 5,208 | 2,063 |
| Apr-17 | 29 | 77 | 78 | 507 | 1,320 | 620 | 3,375 | 4,433 | 1,822 |
| May-17 | 26 | 73 | 110 | 560 | 1,400 | 759 | 4,228 | 5,670 | 2,297 |
| Jun-17 | 24 | 77 | 118 | 559 | 1,293 | 543 | 2,980 | 4,139 | 1,494 |
| Jul-17 | 24 | 62 | 102 | 442 | 1,294 | 504 | 2,701 | 3,771 | 1,419 |
| Aug-17 | 26 | 75 | 96 | 540 | 1,384 | 646 | 3,358 | 4,364 | 1,621 |
| Sep-17 | 16 | 76 | 97 | 512 | 1,325 | 659 | 3,388 | 4,748 | 1,877 |
| Oct-17 | 18 | 71 | 103 | 531 | 1,373 | 745 | 3,693 | 5,167 | 2,087 |
| Nov-17 | 14 | 93 | 111 | 491 | 1,095 | 549 | 3,377 | 4,310 | 1,891 |
| Dec-17 | 21 | 40 | 74 | 373 | 1,001 | 482 | 3,017 | 3,938 | 1,626 |
| Jan-18 | 21 | 93 | 127 | 463 | 1,265 | 661 | 3,284 | 4,169 | 1,773 |
| Feb-18 | 14 | 79 | 102 | 555 | 1,199 | 675 | 3,604 | 4,543 | 2,122 |
| Mar-18 | 20 | 74 | 86 | 491 | 1,248 | 647 | 3,867 | 5,224 | 2,253 |
| Apr-18 | 14 | 89 | 100 | 622 | 1,232 | 608 | 3,295 | 4,818 | 2,080 |
| May-18 | 18 | 86 | 132 | 534 | 1,344 | 735 | 4,142 | 5,592 | 2,211 |
| Jun-18 | 15 | 36 | 88 | 488 | 1,171 | 551 | 2,812 | 3,991 | 1,500 |
| Jul-18 | 17 | 67 | 93 | 441 | 1,144 | 571 | 2,545 | 3,835 | 1,522 |
| Aug-18 | 17 | 96 | 96 | 487 | 1,193 | 598 | 3,057 | 4,134 | 1,723 |
| Sep-18 | 8 | 71 | 95 | 400 | 1,107 | 575 | 3,002 | 3,965 | 1,774 |

² The count of children is not unique as some may have multiple reports assessed at the same time.

| Month | Depen- dency | Abuse | Abuse and Neglect | Neglect | Services Needed | Services Provided, No Longer Needed | Services Recom- mended | Services Not Recom- mended | Un- substanti- ated |
|--------|-----------------|-------|----------------------|---------|--------------------|--|------------------------------|-------------------------------------|---------------------------|
| Oct-18 | 23 | 62 | 108 | 522 | 1,259 | 575 | 3,519 | 5,043 | 2,186 |
| Nov-18 | 10 | 59 | 100 | 484 | 1,026 | 602 | 3,140 | 4,417 | 1,713 |
| Dec-18 | 9 | 55 | 76 | 403 | 875 | 463 | 2,724 | 3,496 | 1,347 |
| Jan-19 | 20 | 60 | 113 | 510 | 1,266 | 608 | 3,394 | 4,964 | 1,936 |
| Feb-19 | 21 | 58 | 155 | 474 | 1,205 | 543 | 3,150 | 4,661 | 1,812 |
| Mar-19 | 21 | 57 | 130 | 559 | 1,281 | 507 | 3,607 | 5,073 | 1,865 |
| Apr-19 | 26 | 73 | 110 | 524 | 1,376 | 537 | 3,361 | 5,091 | 1,867 |
| May-19 | 12 | 82 | 106 | 547 | 1,436 | 625 | 3,707 | 5,898 | 2,156 |
| Jun-19 | 20 | 67 | 107 | 391 | 1,107 | 389 | 2,683 | 4,133 | 1,307 |
| Jul-19 | 14 | 65 | 87 | 511 | 1,197 | 373 | 2,682 | 3,969 | 1,416 |
| Aug-19 | 11 | 82 | 108 | 428 | 1,349 | 409 | 2,924 | 4,598 | 1,484 |
| Sep-19 | 23 | 63 | 112 | 588 | 1,209 | 437 | 3,415 | 4,838 | 2,009 |
| Oct-19 | 15 | 55 | 127 | 538 | 1,361 | 419 | 3,629 | 5,559 | 2,178 |
| Nov-19 | 20 | 55 | 77 | 354 | 1,097 | 291 | 3,135 | 4,544 | 1,672 |
| Dec-19 | 11 | 63 | 88 | 488 | 1,149 | 356 | 3,135 | 4,355 | 1,460 |
| Jan-20 | 17 | 72 | 107 | 484 | 1,441 | 364 | 3,763 | 4,970 | 1,576 |
| Feb-20 | 19 | 58 | 82 | 434 | 1,206 | 297 | 3,467 | 4,761 | 1,632 |
| Mar-20 | 16 | 57 | 88 | 403 | 1,019 | 320 | 3,163 | 4,450 | 1,319 |
| Apr-20 | 11 | 53 | 67 | 394 | 1,017 | 243 | 2,400 | 2,906 | 907 |
| May-20 | 18 | 60 | 62 | 424 | 1,078 | 266 | 2,671 | 3,253 | 1,214 |
| Jun-20 | 5 | 61 | 91 | 433 | 1,106 | 327 | 2,793 | 3,546 | 1,152 |
| Jul-20 | 10 | 64 | 139 | 462 | 1,058 | 357 | 2,763 | 3,745 | 1,317 |
| Aug-20 | 17 | 47 | 82 | 404 | 1,209 | 275 | 3,031 | 3,856 | 1,267 |
| Sep-20 | 10 | 40 | 101 | 403 | 1,171 | 350 | 3,185 | 4,168 | 1,502 |
| Oct-20 | 18 | 47 | 99 | 424 | 1,138 | 390 | 3,331 | 4,332 | 1,446 |

**Table Five:
The Number of Children Entering Foster Care**

| Month | Initial Entries | Total Entries | Month | Initial Entries | Total Entries |
|--------|-----------------|---------------|--------|-----------------|---------------|
| Jan-16 | 391 | 436 | Jul-18 | 431 | 492 |
| Feb-16 | 368 | 445 | Aug-18 | 493 | 580 |
| Mar-16 | 502 | 564 | Sep-18 | 380 | 454 |
| Apr-16 | 443 | 513 | Oct-18 | 445 | 529 |
| May-16 | 428 | 512 | Nov-18 | 363 | 413 |
| Jun-16 | 509 | 567 | Dec-18 | 322 | 365 |
| Jul-16 | 460 | 530 | Jan-19 | 398 | 478 |
| Aug-16 | 520 | 596 | Feb-19 | 447 | 532 |
| Sep-16 | 530 | 591 | Mar-19 | 424 | 483 |
| Oct-16 | 416 | 457 | Apr-19 | 458 | 539 |
| Nov-16 | 433 | 488 | May-19 | 423 | 502 |
| Dec-16 | 413 | 467 | Jun-19 | 381 | 456 |
| Jan-17 | 414 | 536 | Jul-19 | 430 | 514 |
| Feb-17 | 437 | 532 | Aug-19 | 416 | 484 |
| Mar-17 | 533 | 664 | Sep-19 | 395 | 470 |
| Apr-17 | 435 | 519 | Oct-19 | 430 | 509 |
| May-17 | 476 | 567 | Nov-19 | 370 | 439 |
| Jun-17 | 449 | 511 | Dec-19 | 323 | 367 |
| Jul-17 | 421 | 500 | Jan-20 | 420 | 499 |
| Aug-17 | 529 | 628 | Feb-20 | 470 | 531 |
| Sep-17 | 371 | 465 | Mar-20 | 430 | 480 |
| Oct-17 | 434 | 507 | Apr-20 | 271 | 327 |
| Nov-17 | 383 | 471 | May-20 | 326 | 397 |
| Dec-17 | 317 | 380 | Jun-20 | 345 | 385 |
| Jan-18 | 360 | 438 | Jul-20 | 425 | 488 |
| Feb-18 | 379 | 463 | Aug-20 | 374 | 437 |
| Mar-18 | 442 | 504 | Sep-20 | 406 | 479 |
| Apr-18 | 404 | 478 | Oct-20 | 445 | 507 |
| May-18 | 508 | 576 | Nov-20 | 384 | 458 |
| Jun-18 | 432 | 516 | Dec-20 | 311 | 363 |

**Table Six:
The Number of Children Exiting Foster Care**

| Month | Number of Children Existing Foster Care | Month | Number of Children Existing Foster Care |
|--------|---|--------|---|
| Jan-16 | 440 | Jul-18 | 434 |
| Feb-16 | 493 | Aug-18 | 566 |
| Mar-16 | 468 | Sep-18 | 408 |
| Apr-16 | 450 | Oct-18 | 540 |
| May-16 | 496 | Nov-18 | 470 |
| Jun-16 | 480 | Dec-18 | 428 |
| Jul-16 | 458 | Jan-19 | 477 |
| Aug-16 | 577 | Feb-19 | 397 |
| Sep-16 | 481 | Mar-19 | 470 |
| Oct-16 | 423 | Apr-19 | 432 |
| Nov-16 | 494 | May-19 | 554 |
| Dec-16 | 401 | Jun-19 | 422 |
| Jan-17 | 497 | Jul-19 | 506 |
| Feb-17 | 397 | Aug-19 | 533 |
| Mar-17 | 551 | Sep-19 | 529 |
| Apr-17 | 451 | Oct-19 | 566 |
| May-17 | 493 | Nov-19 | 489 |
| Jun-17 | 477 | Dec-19 | 478 |
| Jul-17 | 494 | Jan-20 | 447 |
| Aug-17 | 509 | Feb-20 | 483 |
| Sep-17 | 460 | Mar-20 | 359 |
| Oct-17 | 480 | Apr-20 | 296 |
| Nov-17 | 522 | May-20 | 293 |
| Dec-17 | 442 | Jun-20 | 582 |
| Jan-18 | 436 | Jul-20 | 544 |
| Feb-18 | 472 | Aug-20 | 430 |
| Mar-18 | 531 | Sep-20 | 476 |
| Apr-18 | 355 | Oct-20 | 454 |
| May-18 | 514 | Nov-20 | 415 |
| Jun-18 | 428 | Dec-20 | 468 |